

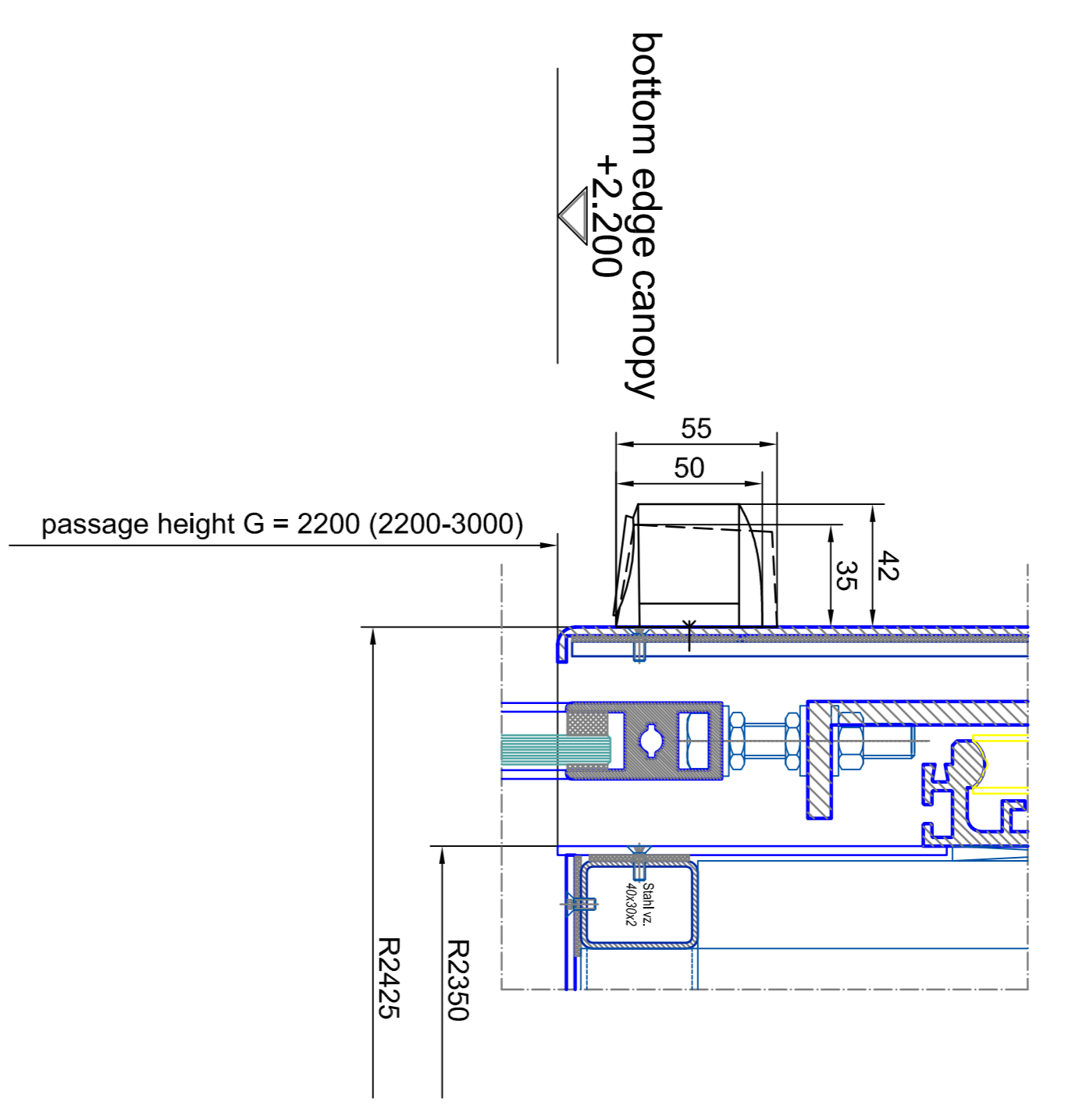
outside

vertical section

inside

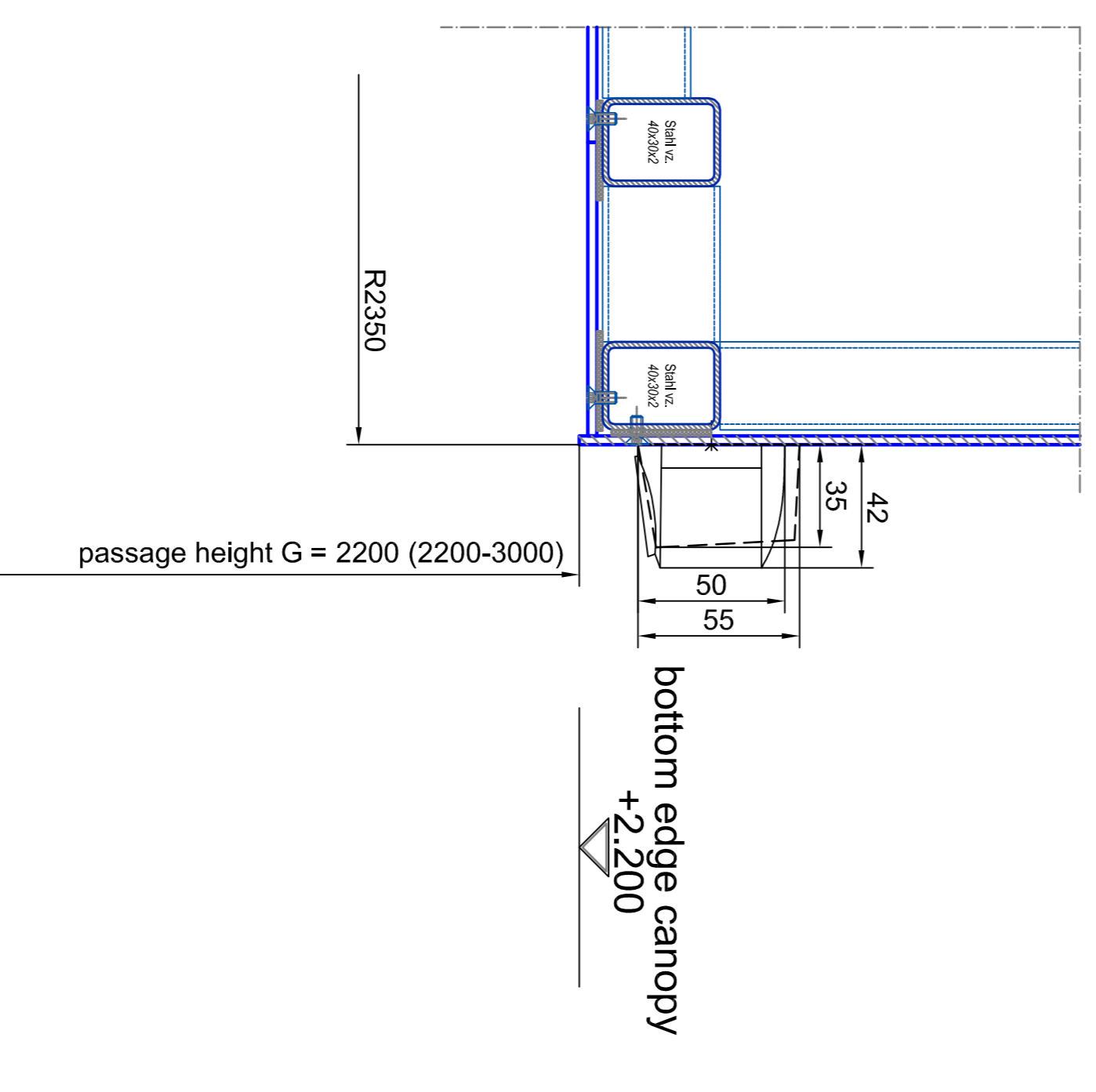
**vertical section -
passage area outside**

A0 - M 1:2



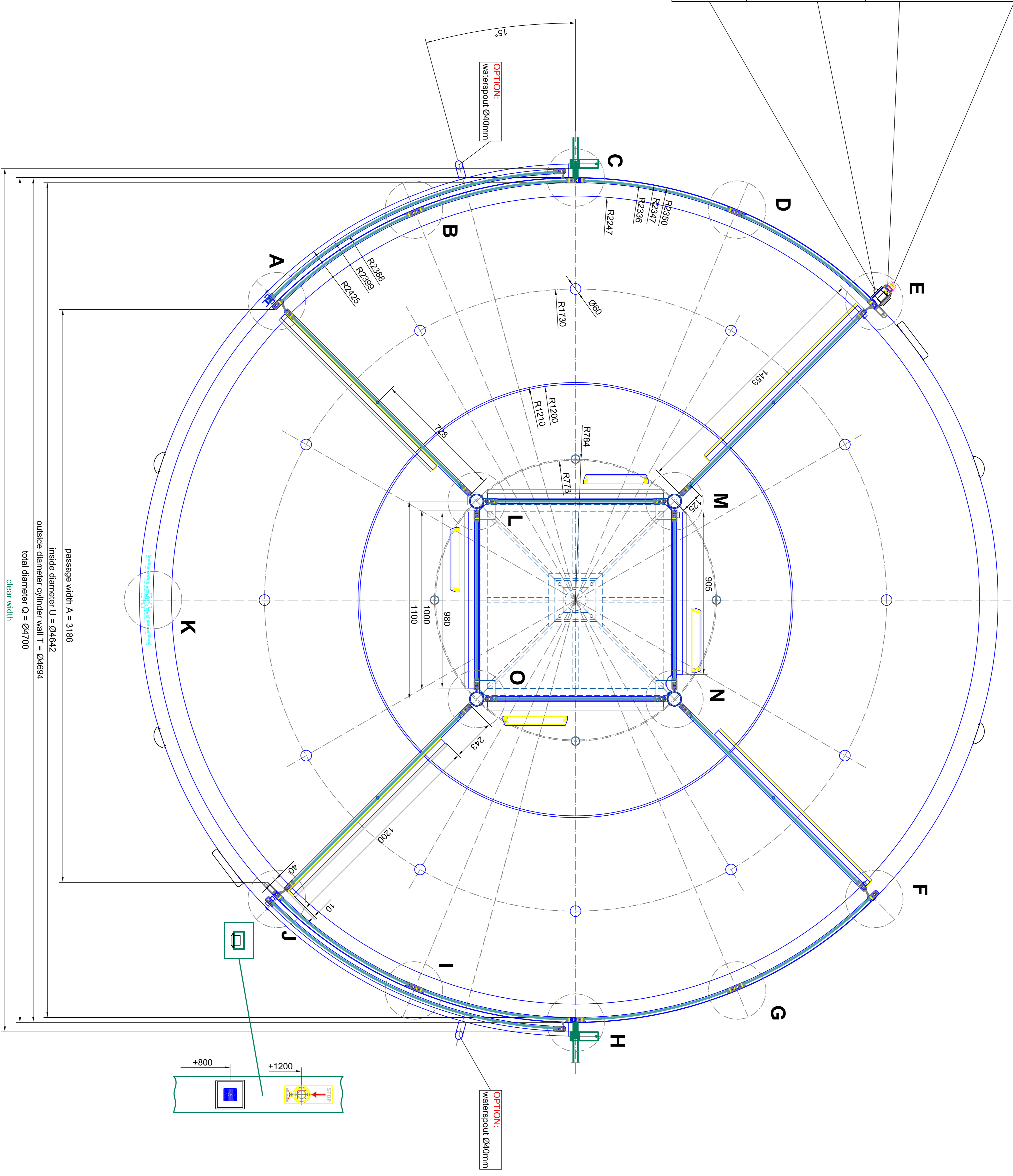
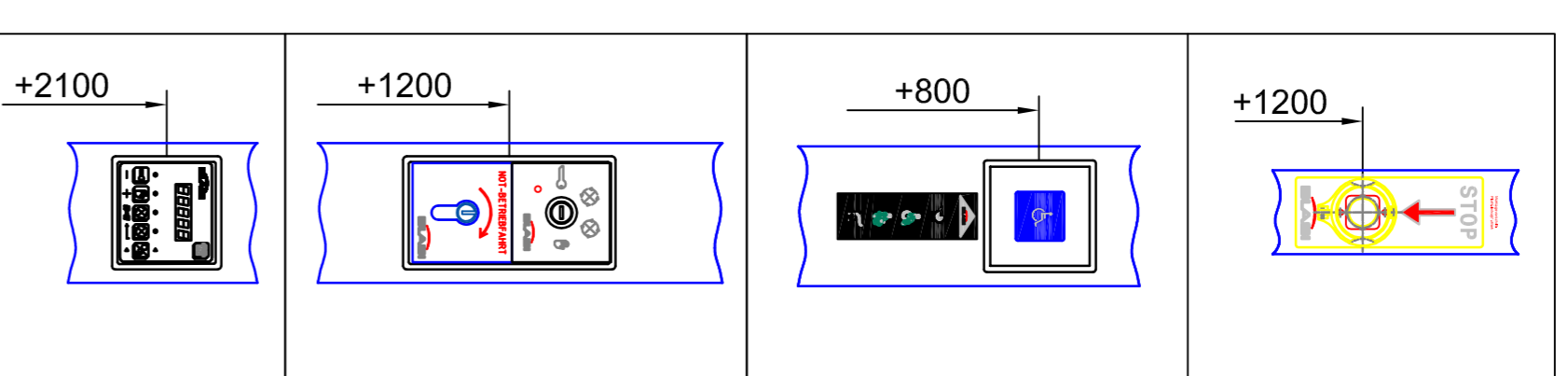
**vertical section -
passage area inside**

A0 - M 1:2



| | | | |
|----------|------------------|----------|---------------------------|
| Scale: | 1:1 (ratio 1:1) | Scale: | A0-M 1:2 |
| Project: | BLASI | Project: | K41-VI/VINMA-47 Break Out |
| Client: | Automatic Doors | Client: | SAMPLE DRAWING ONLY |
| Address: | Blasi G m b H | Address: | |
| City: | Automatic Doors | City: | |
| Country: | Germany | Country: | |
| Phone: | +49 3227 883 289 | Phone: | |
| Fax: | +49 3227 883 289 | Fax: | |
| Email: | info@blasi.de | Email: | |
| Website: | www.blasi.de | Website: | |

BLASI
 BLASI G m b H
 Automatic Doors
 Ost-Deich-Straße 5-15
 D - 71732 Mühlburg
 Tel. +49 3227 / 883 - 289
 Fax. +49 3227 / 883 - 289
 Email: info@blasi.de
 WWW: blasi.de



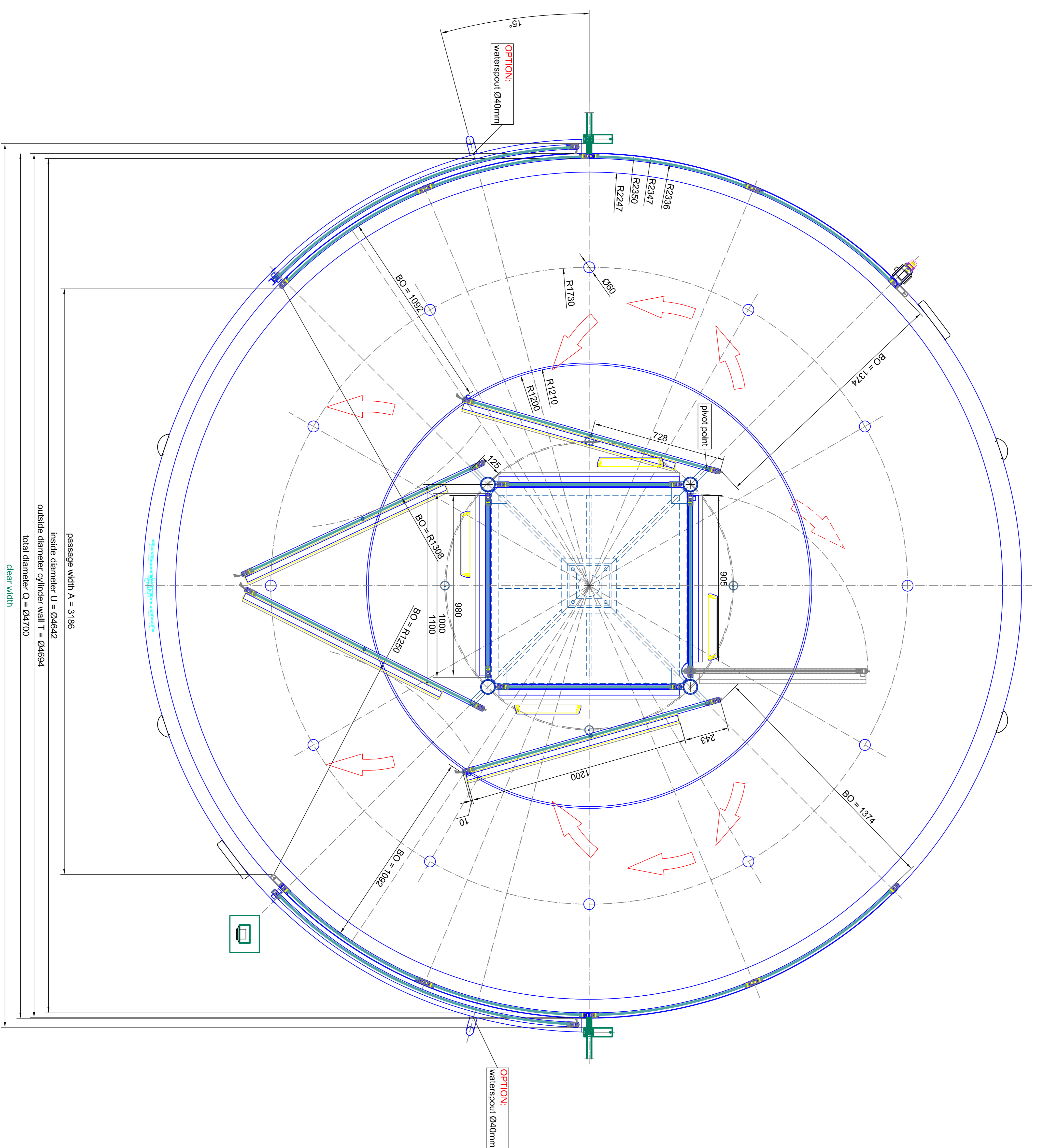
passage width A = 3198
 inside diameter U = Ø4642
 outside diameter cylinder wall T = Ø4694
 total diameter O = Ø4700
 clear width

outside

inside

horizontal section - door in standard position

| | | | |
|---|--|--|---|
| BLASI B L A S I G m b H Automatic Doors Ost-Str. 5-15 D - 71972 Ulmberg | | Tel. +49 7142 / 883 - 291 Fax. +49 7142 / 883 - 299 E-mail: info@blasig.de WWW: blasig.de | |
| Model: AcH10 Code: K41-V/INMA-47 Description: Break Out Project: SAMPLE DRAWING ONLY | Material: Al (6063) Color: White Safety: Laminated safety glass 10 mm | Material: Al (6063) Color: White Safety: Laminated safety glass 10 mm | Model: AcH10 Code: K41-V/INMA-47 Description: Break Out Project: SAMPLE DRAWING ONLY |



inside

outside

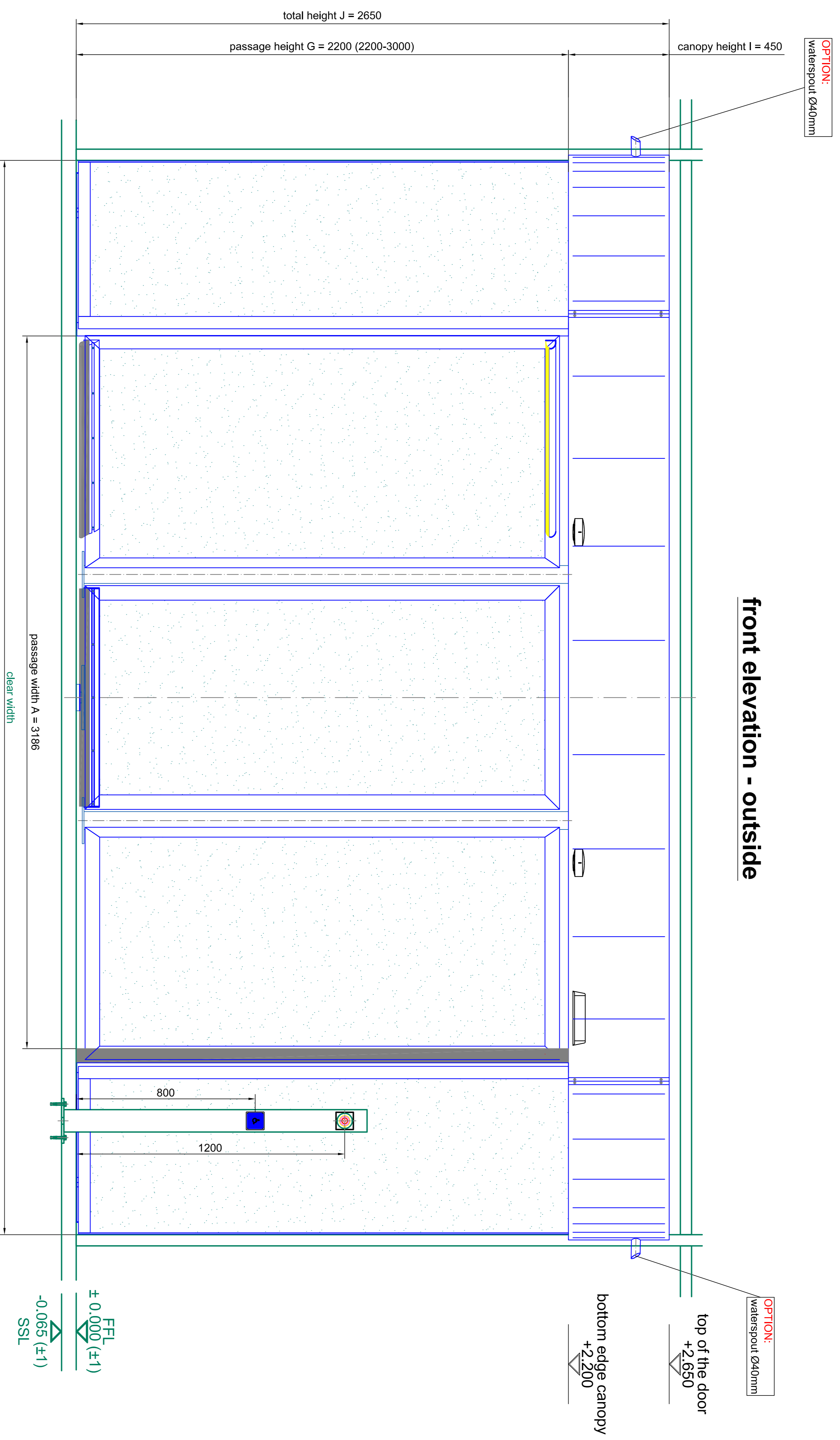
passage width A = 3188
 inside diameter U = Ø4642
 outside diameter cylinder wall T = Ø4694
 total diameter Q = Ø4700
 clear width

horizontal section - door in break out position

| | | | |
|--------------|--|--------------|--|
| Material | Al (6063-T5) | Material | Al (6063-T5) |
| Surface | tempoat safety glass 10 mm | Surface | tempoat safety glass 10 mm |
| Height | 304 mm | Height | 304 mm |
| Weight | 10.5 kg | Weight | 10.5 kg |
| Manufacturer | BLASI | Manufacturer | BLASI |
| Model | Al-H10 | Model | Al-H10 |
| Color | black | Color | black |
| Finish | brushed | Finish | brushed |
| Accessories | hardware | Accessories | hardware |
| Notes | 1. All dimensions are in mm unless otherwise specified. 2. All dimensions are in mm unless otherwise specified. | Notes | 1. All dimensions are in mm unless otherwise specified. 2. All dimensions are in mm unless otherwise specified. |

BLASI
 Automatic Doors
 Via S. Maria 10
 41013 Prato (MO) Italy
 Tel. +39 0521 881 291
 Fax. +39 0521 881 299
 Email. info@blasi.it
 WWW. BLASI . IT

K41-VV/MMA-47 Break Out
 SAMPLE DRAWING ONLY
 Page 03
 Rev 05



| | | |
|----------|-----------------------------|------------------------------|
| Material | Al (anodized) | Al (anodized) components |
| Surface | 304 ss | 304 ss |
| Glazing | tempered safety glass 10 mm | laminated safety glass 10 mm |

BLASI

BLASI G m b H
Automatic Doors
Caf. Dep. Street 5-15
D - 11312 München
Tel. +49(0)221 / 883 - 231
Fax. +49(0)221 / 883 - 239
E-mail: info@blasig.de
www.blasi.de

Project: **K41-VINNMA-47 Break Out**
SAMPLE DRAWING ONLY

Scale: **A4=1:10**

Page: **04** of **05**

