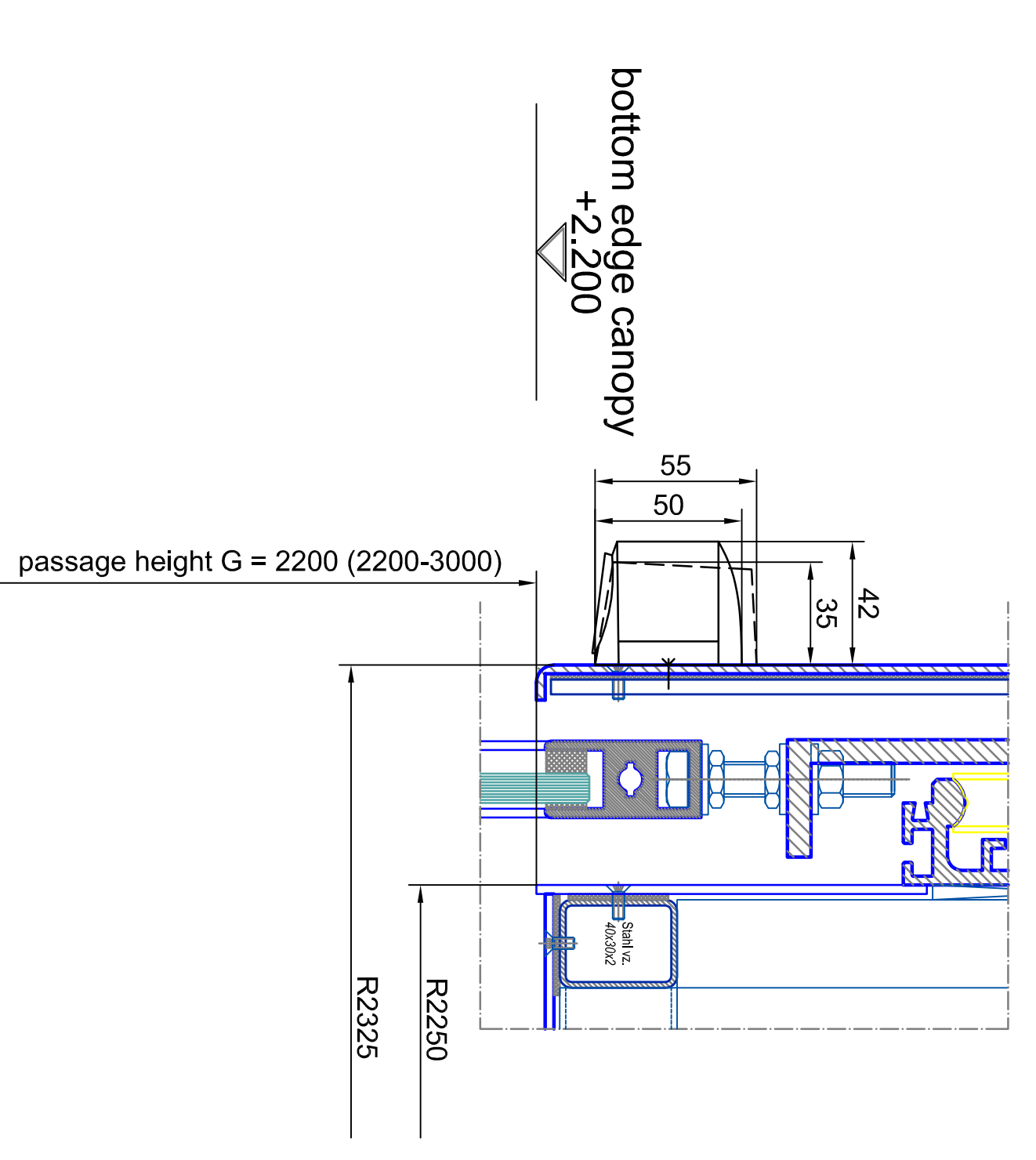


**vertical section -  
passage area outside**

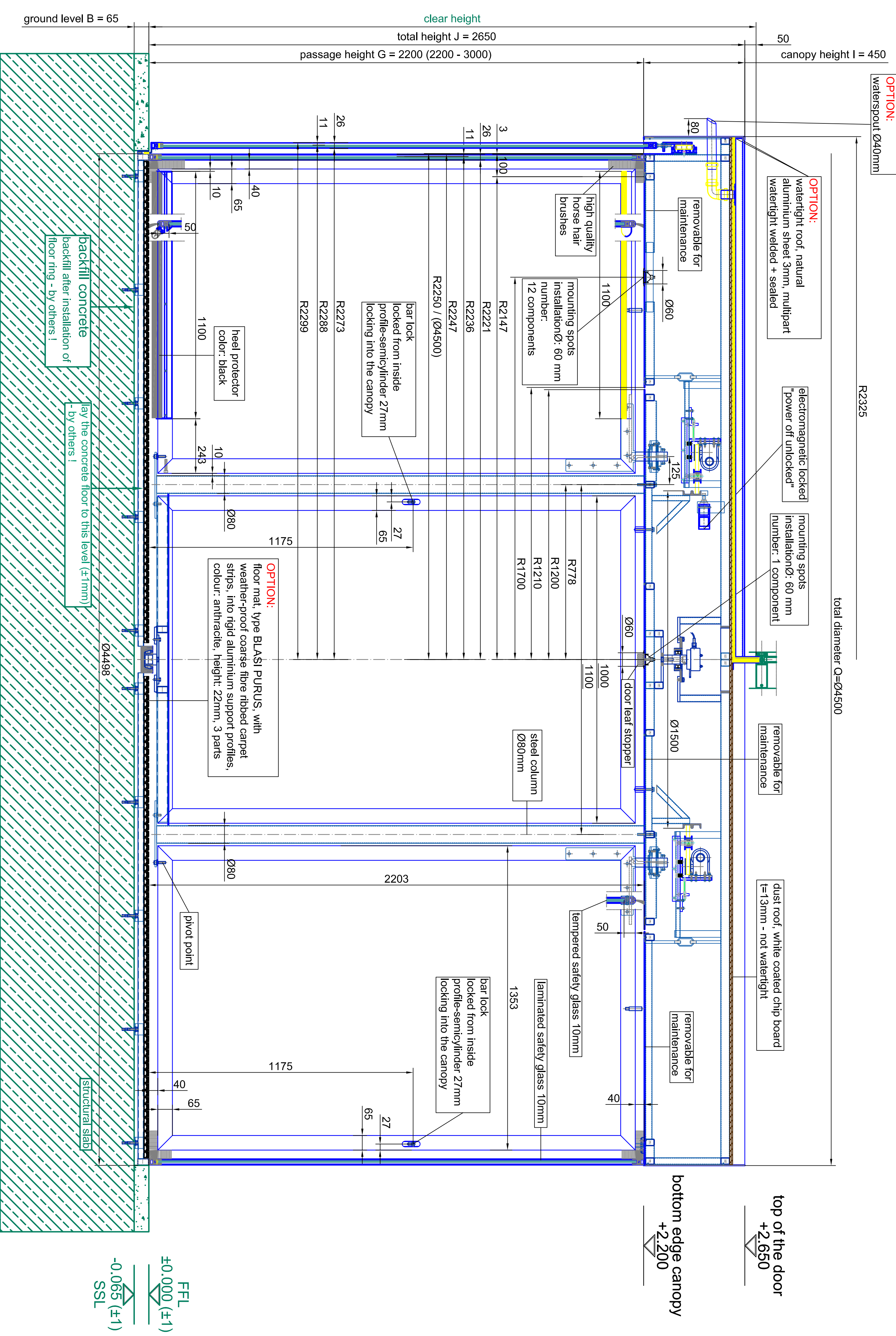
A0 - M 1:2



**vertical section**

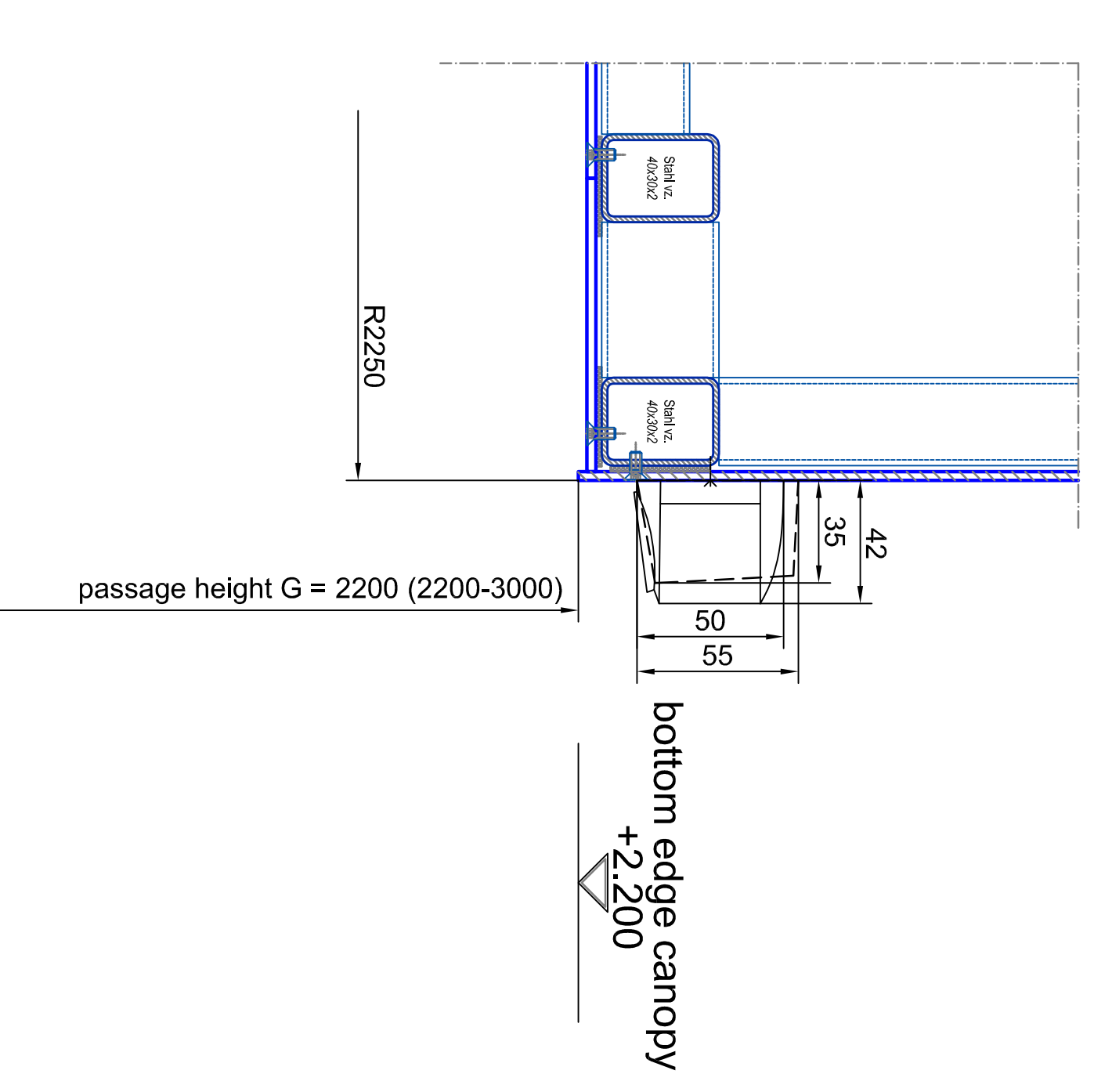
**inside**

**outside**



**vertical section -  
passage area inside**

A0 - M 1:2



Scale:	1:100 (1:100)	Scale:	A0-M 1:2
Project:	39144	Client:	(CN 3911)
Material:	tempered safety glass 10 mm	Material:	laminated safety glass 10 mm
Manufacturer:	BLASI	Manufacturer:	BLASI
Product:	Automatic Doors	Product:	K41-VV/MMA-45 Break Out
Model:	Automatic Doors	Model:	SAMPLE DRAWING ONLY
Version:	01	Version:	04

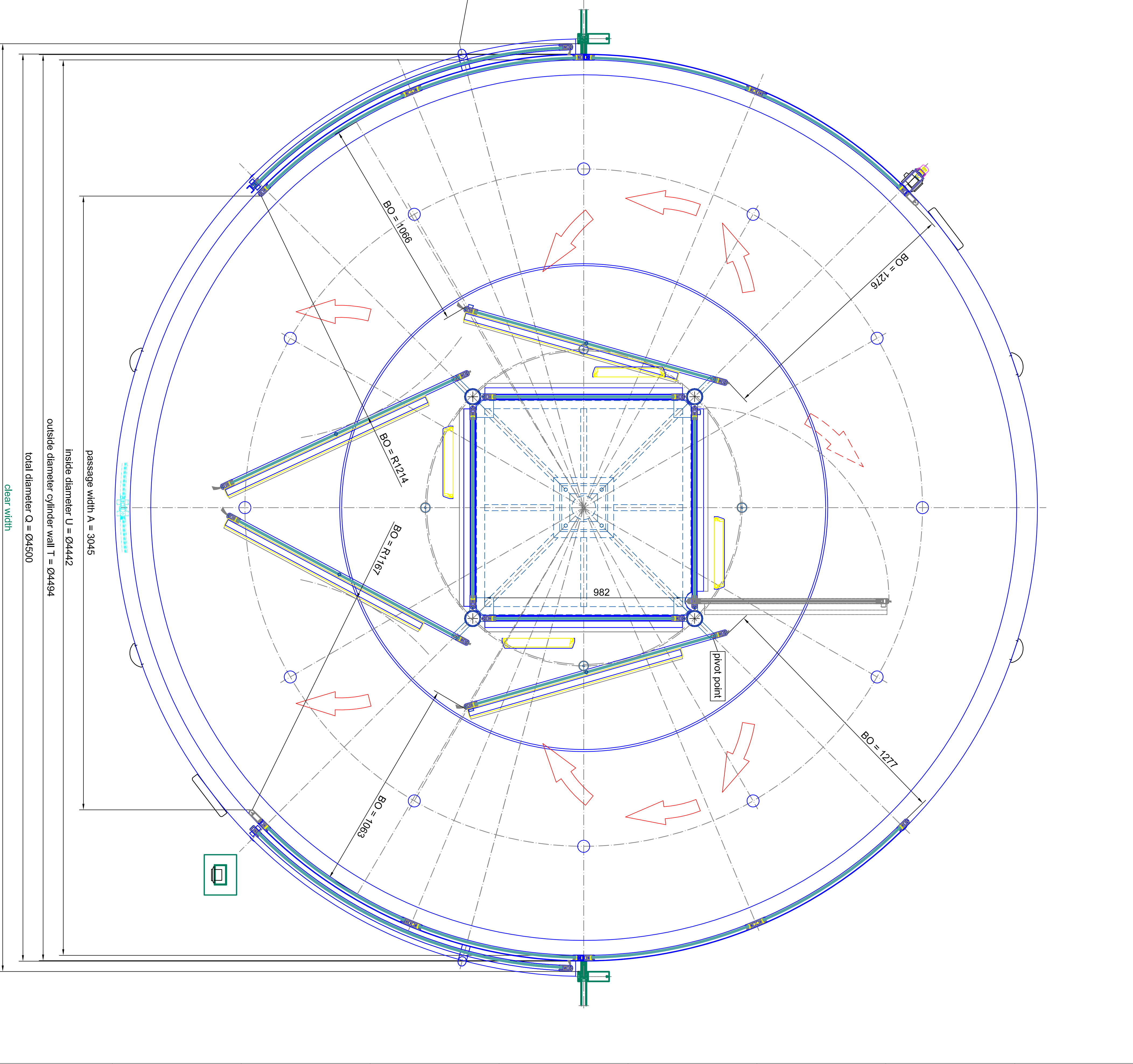
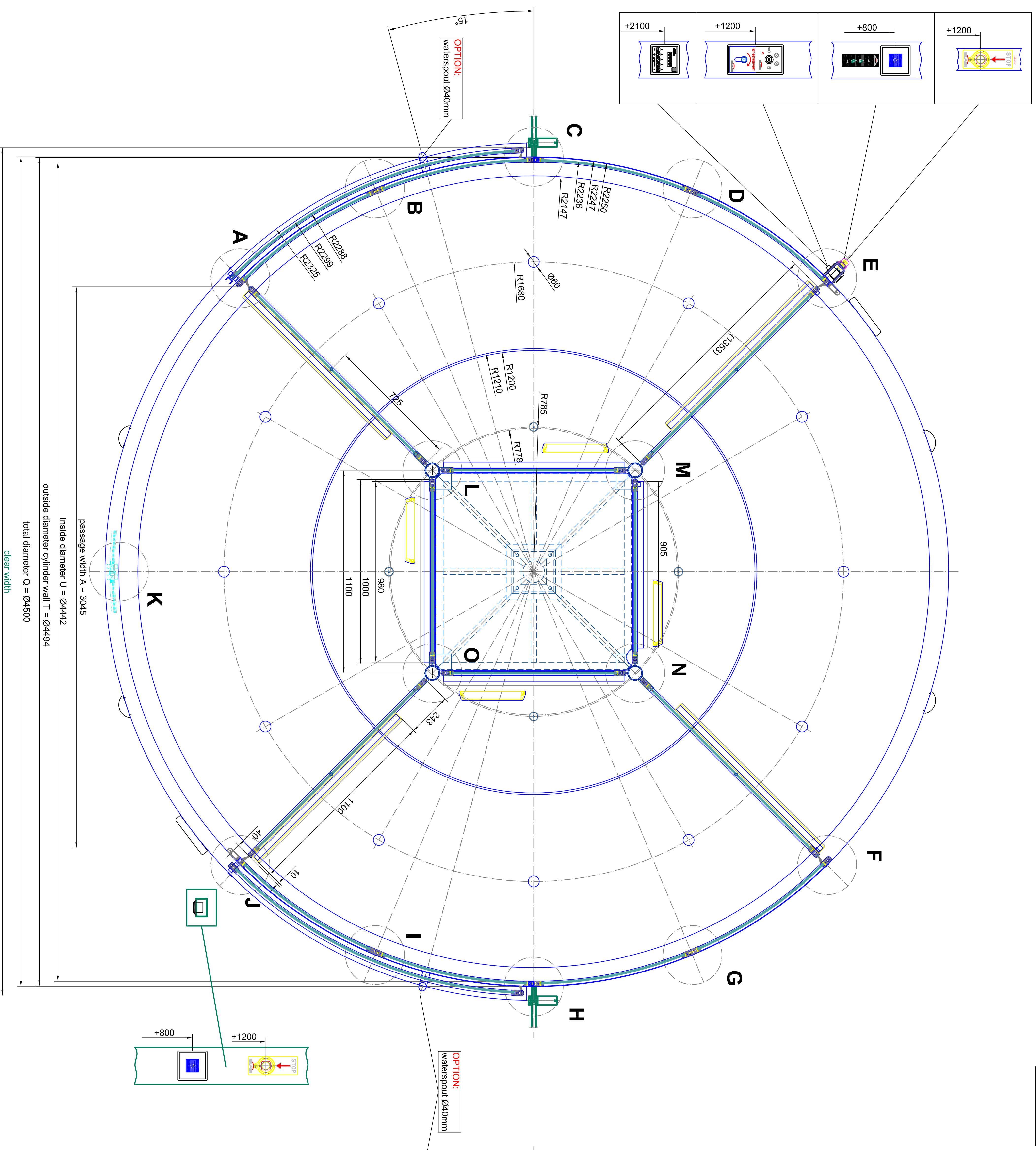
BLASI  
Automatic Doors  
K41-VV/MMA-45 Break Out

BLASI G.m.b.H.  
Automatic Doors  
Ost-Str. 5-15  
D-71737 Mühlweg

BLASI G.m.b.H.  
Automatic Doors  
Ost-Str. 5-15  
D-71737 Mühlweg

BLASI G.m.b.H.  
Automatic Doors  
Ost-Str. 5-15  
D-71737 Mühlweg



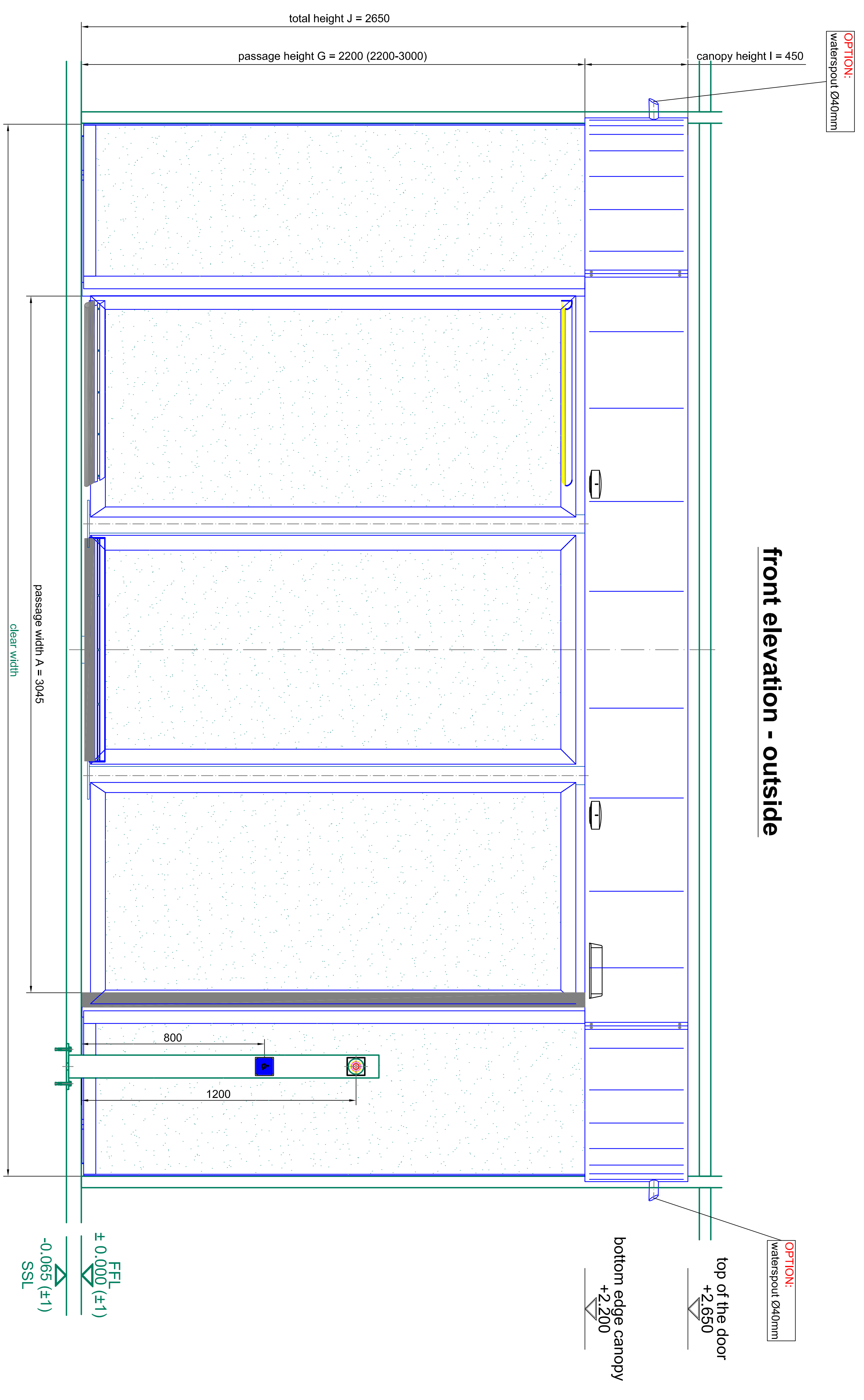


horizontal section - door in standard position

horizontal section - door in break out position

BLASI Automatic Doors Def. desc. Sheet 5-15 D - 7797 2 Nürnberg	Tel. +49(0)227 / 883 - 291 Fax. +49(0)227 / 883 - 299 E-mail: info@blasi.de WWW: Blasi.de - 1410	BLASI K41-VV/INMA-45 Break Out SAMPLE DRAWING ONLY
Status: 304 44 Project: 1410 Date: 10/2011	Scale: A4=1:10 Drawing No.: 1410	Page: 02 Total: 04





**front elevation - outside**

Standard	EN 11253	EN 11253-1	EN 11253-2
Material	304 Ls	304 Ls	304 Ls
Height	2050 mm	2050 mm	2050 mm
Width	2050 mm	2050 mm	2050 mm
Weight	100 kg	100 kg	100 kg
Manufacturer	BLASI	BLASI	BLASI
Model	AEH-10	AEH-10	AEH-10
Color	Black	Black	Black
Finish	Brushed	Brushed	Brushed
Accessories	Handle, Lock, Key	Handle, Lock, Key	Handle, Lock, Key
Notes	<p>BLASI - Automatic Doors          Automatic Doors          Call: +39 02 7600 1111          Fax: +39 02 7600 1112          Email: info@blasi.com          Website: www.blasi.com</p>		
Project	K41-VINIMA-45 Break Out		
Client	SAMPLE DRAWING ONLY		
Scale	1:100		
Version	04		



