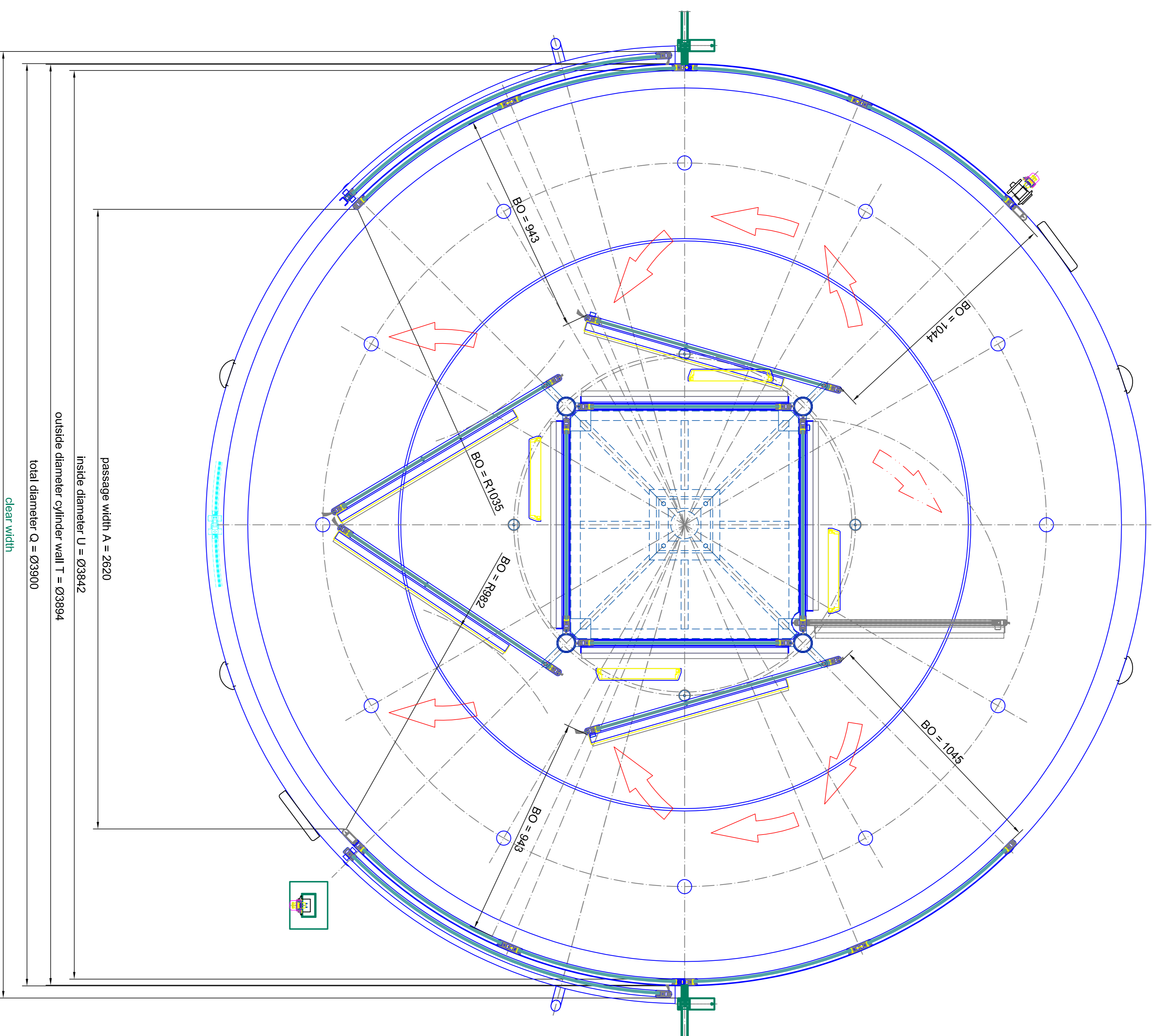


inside

outside

horizontal section - door in standard position

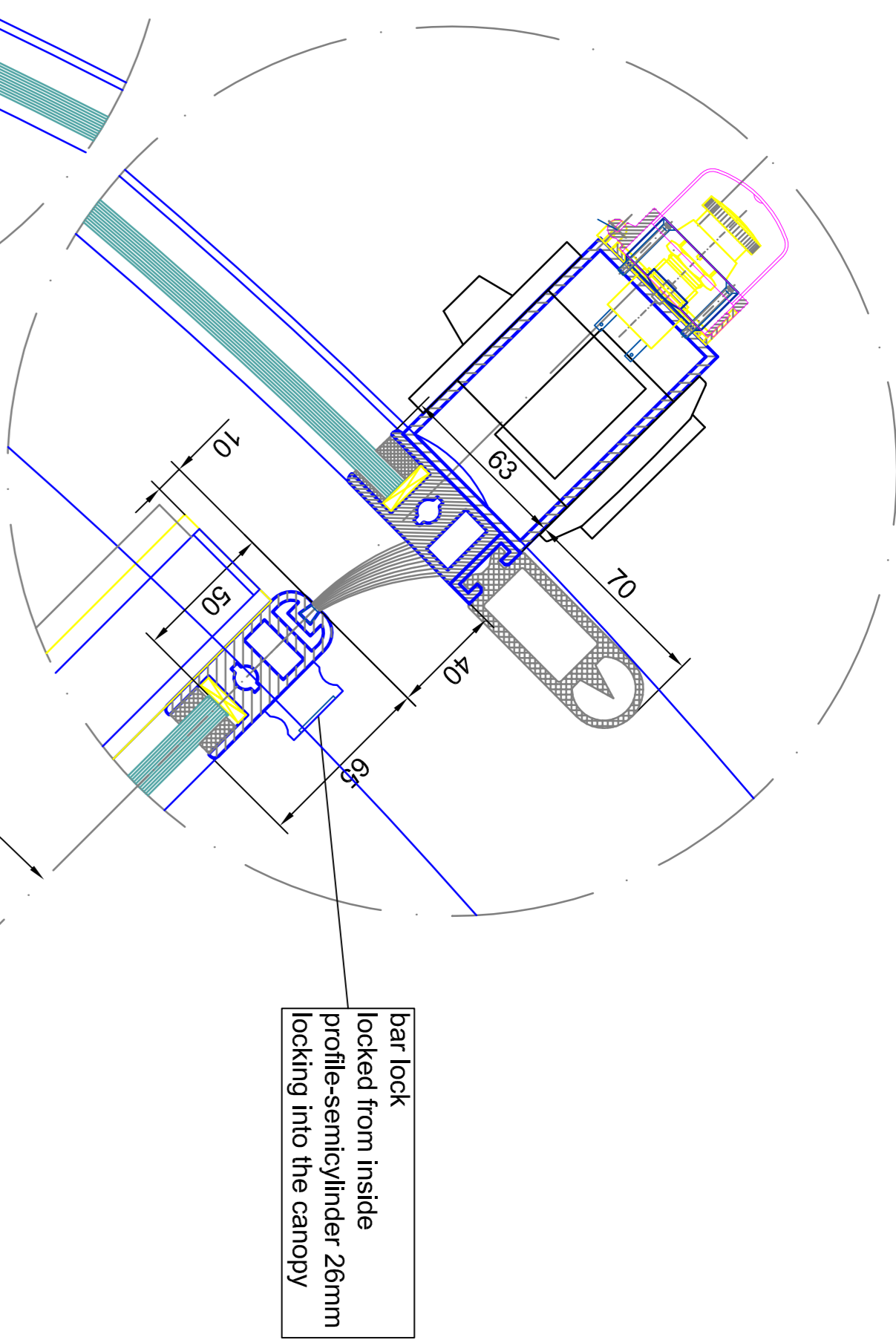


horizontal section - door in break out position

		<b>BLASI</b> Automatic Doors Def. Spec. Sheet S-15 D - 17/17-2-100009	
Tel. +670227 / 881 - 291 Fax. +670227 / 881 - 299 E-mail. info@blasi.com WWW. Blasi . Italo		<b>K41-VV/MMA-39 Break Out</b> SAMPLE DRAWING ONLY	
Scale: A4=1:10 Coordinate: X: Y: Z:	Date: 12/08/2011 Version: 04	Project:	Client:
Author:	Designer:	Checker:	Approver:
Material:	Color:	Finish:	Notes:
Standard:	Temperature safety glass: 10 mm Safety glass: 10 mm	Material:	Safety glass: 10 mm
Reference:	Reference:	Reference:	Reference:
Drawing No.:	Drawing No.:	Drawing No.:	Drawing No.:
Page: 02 Total: 04	Page: 02 Total: 04	Page: 02 Total: 04	Page: 02 Total: 04



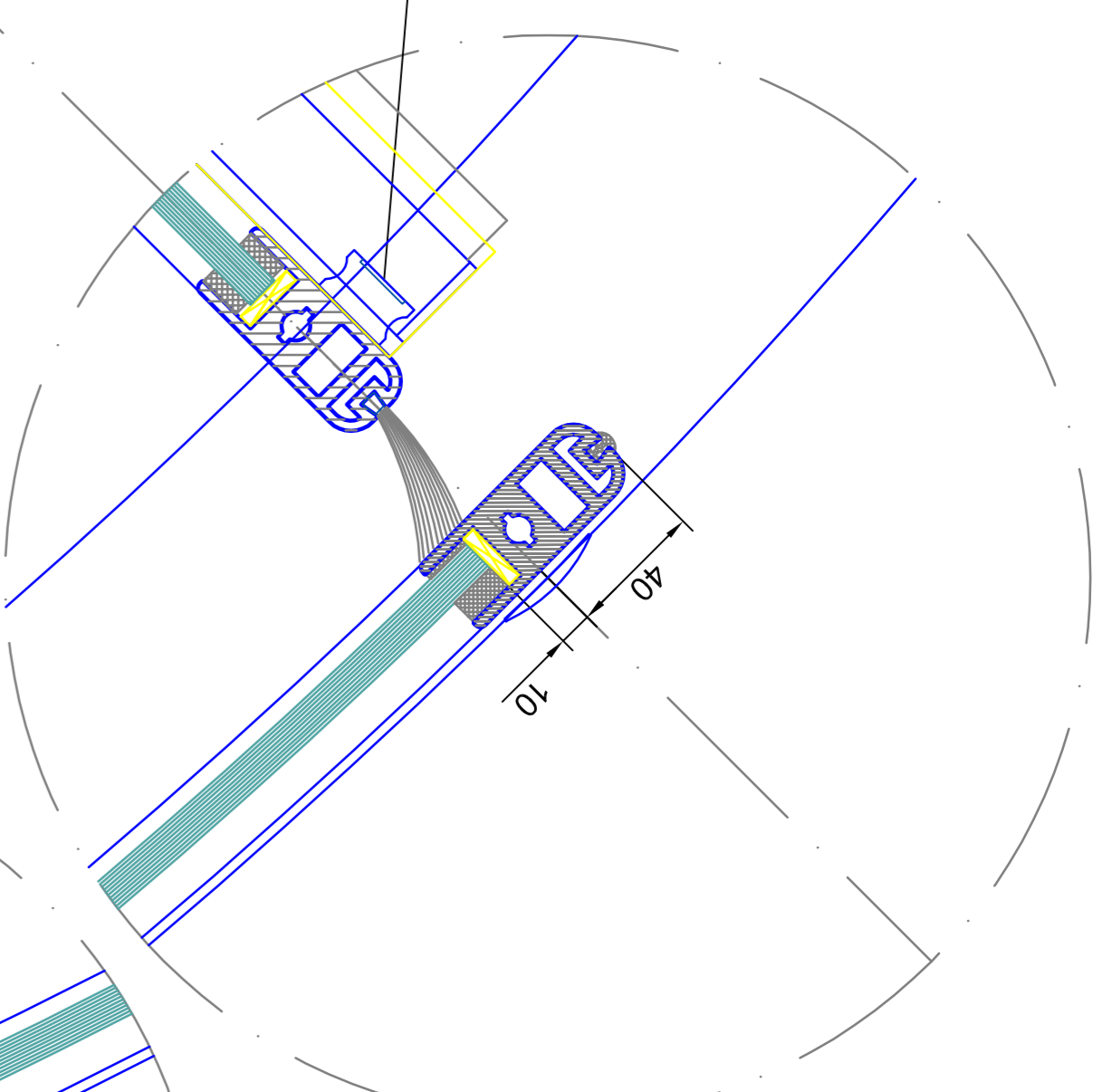
detail E



inside

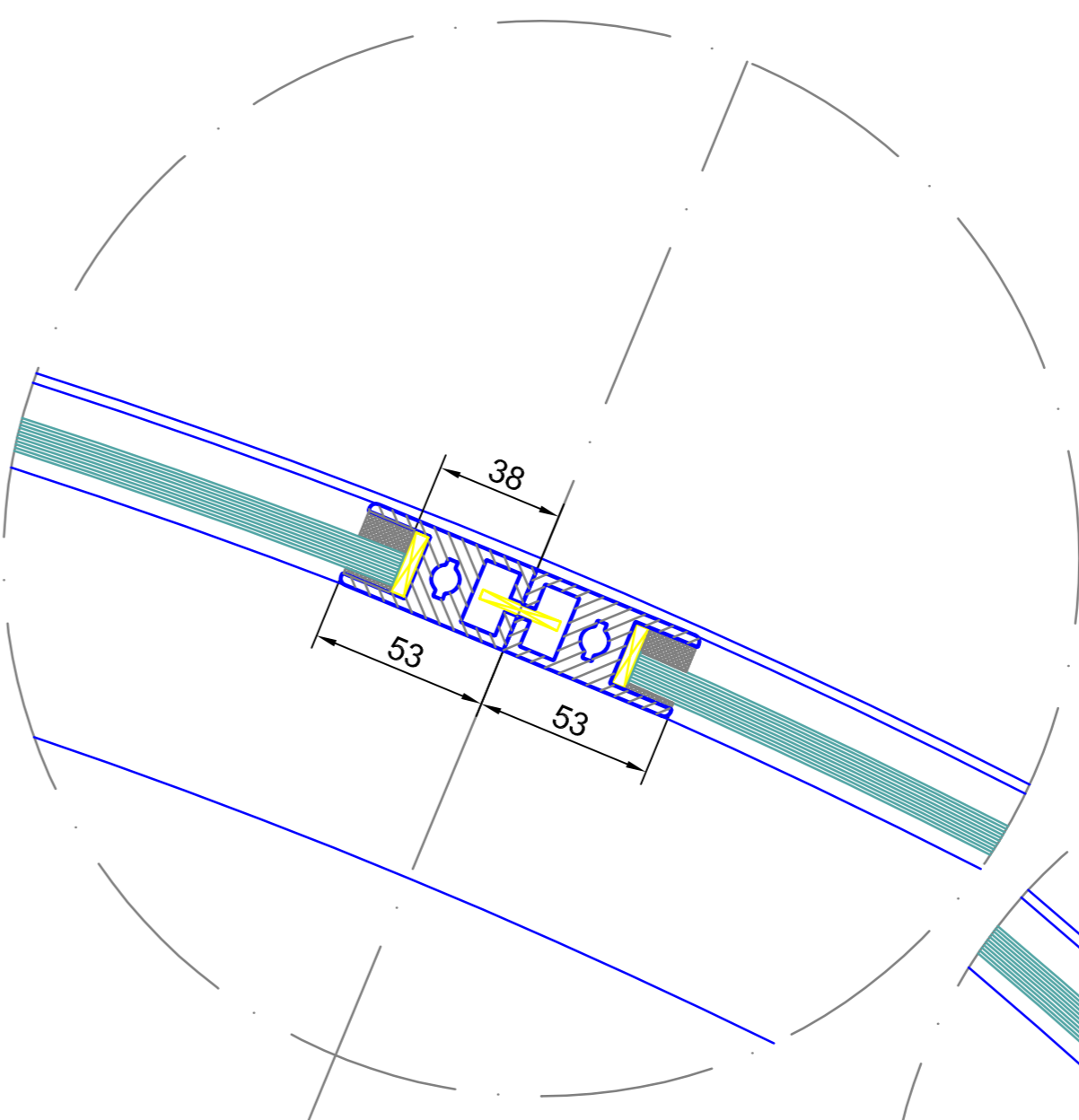
bar lock  
locked from inside  
profile-semicylinder 26mm  
locking into the canopy

detail F

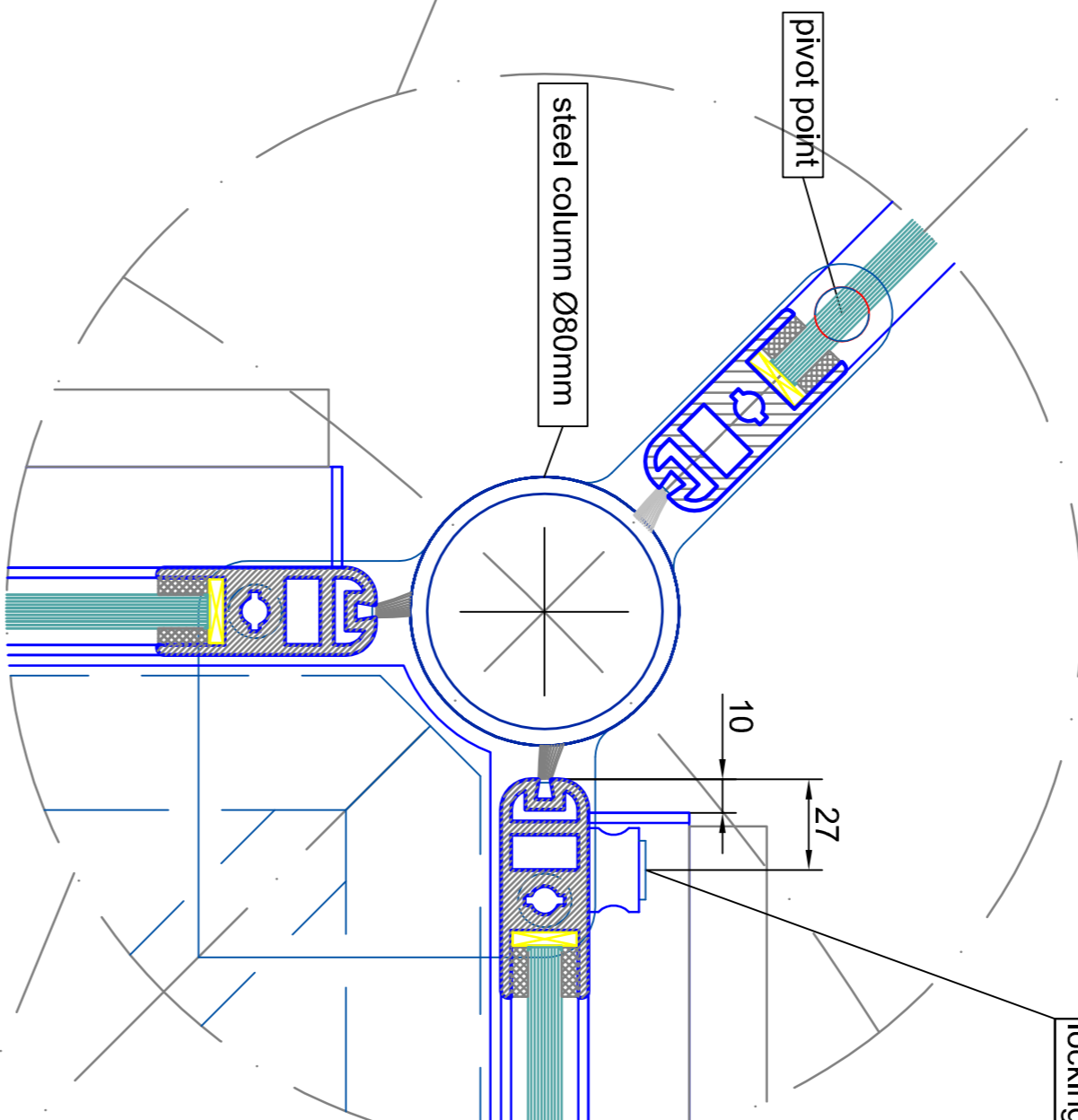


bar lock  
locked from inside  
profile-semicylinder 26mm  
locking into the canopy

detail D

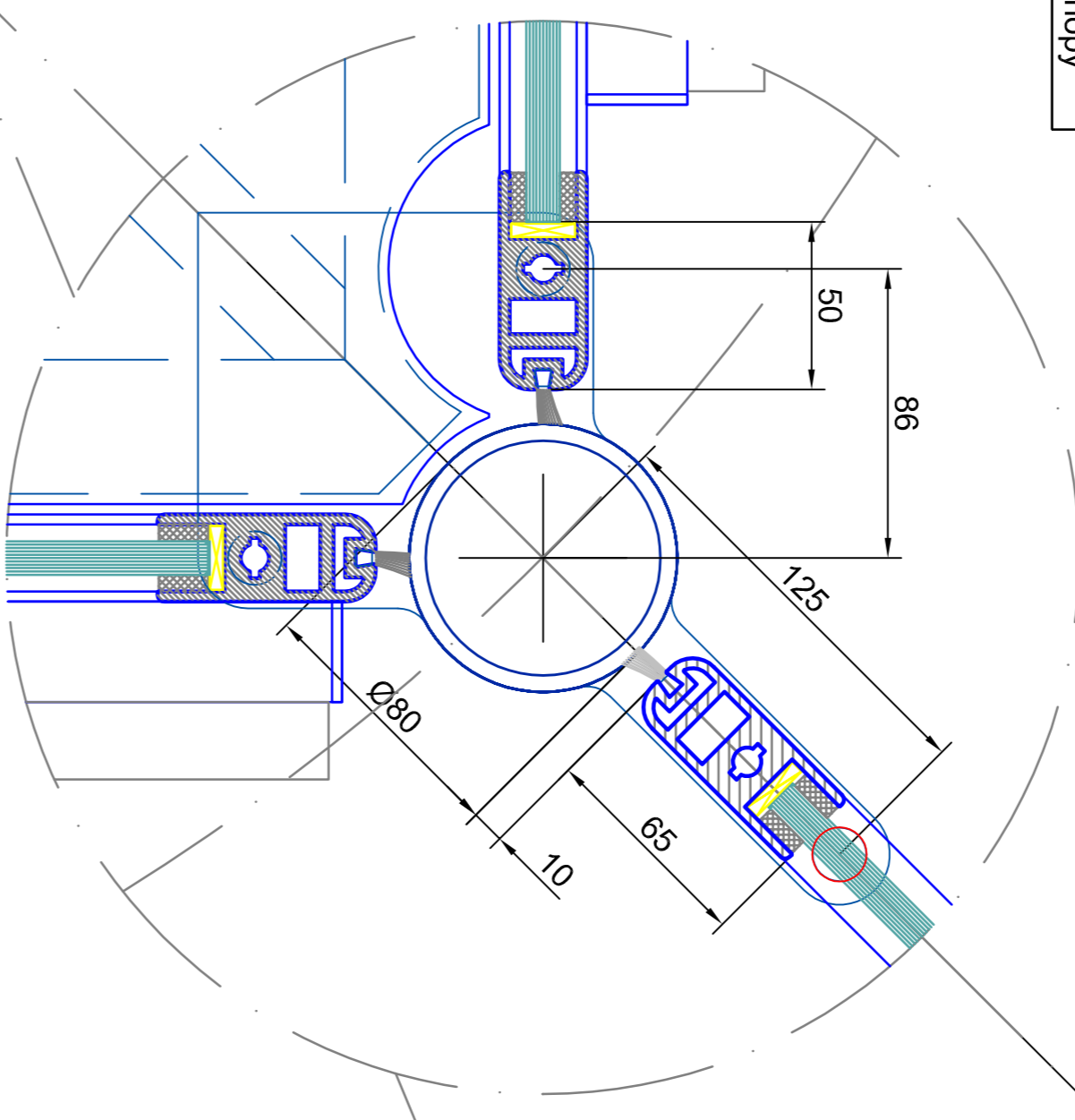


detail M

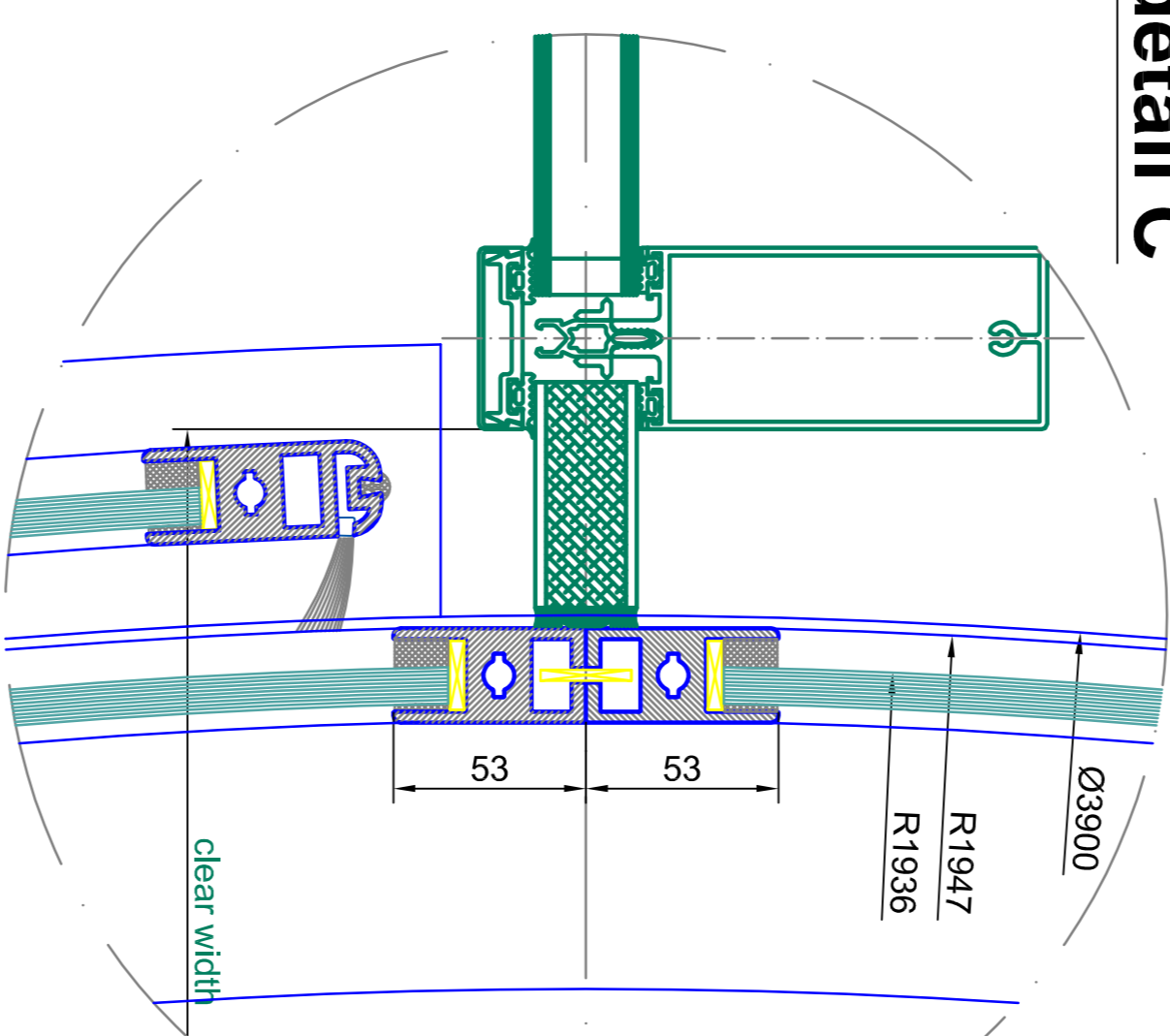


bar lock  
locked from inside  
profile-semicylinder 26mm  
locking into the canopy

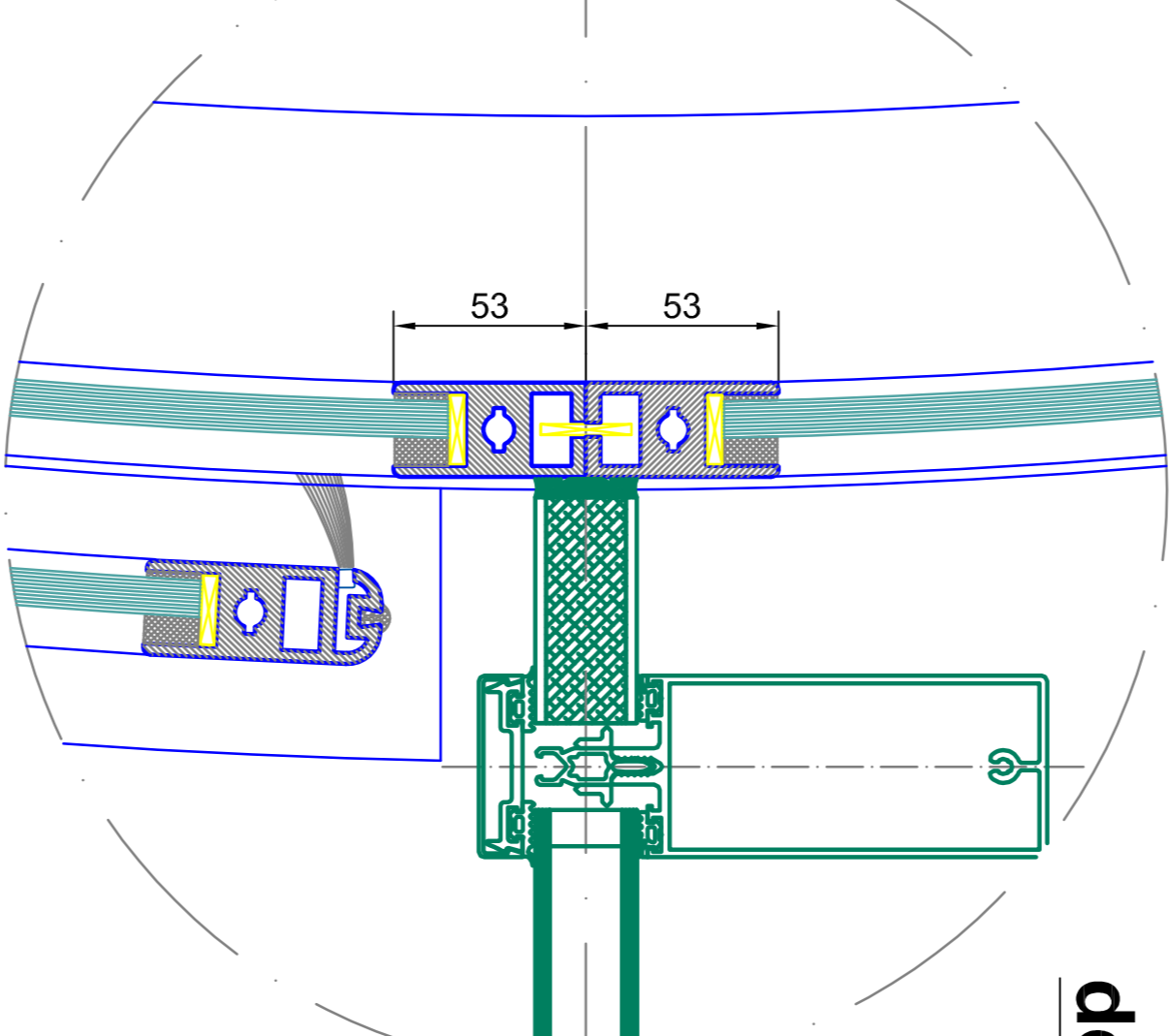
detail N



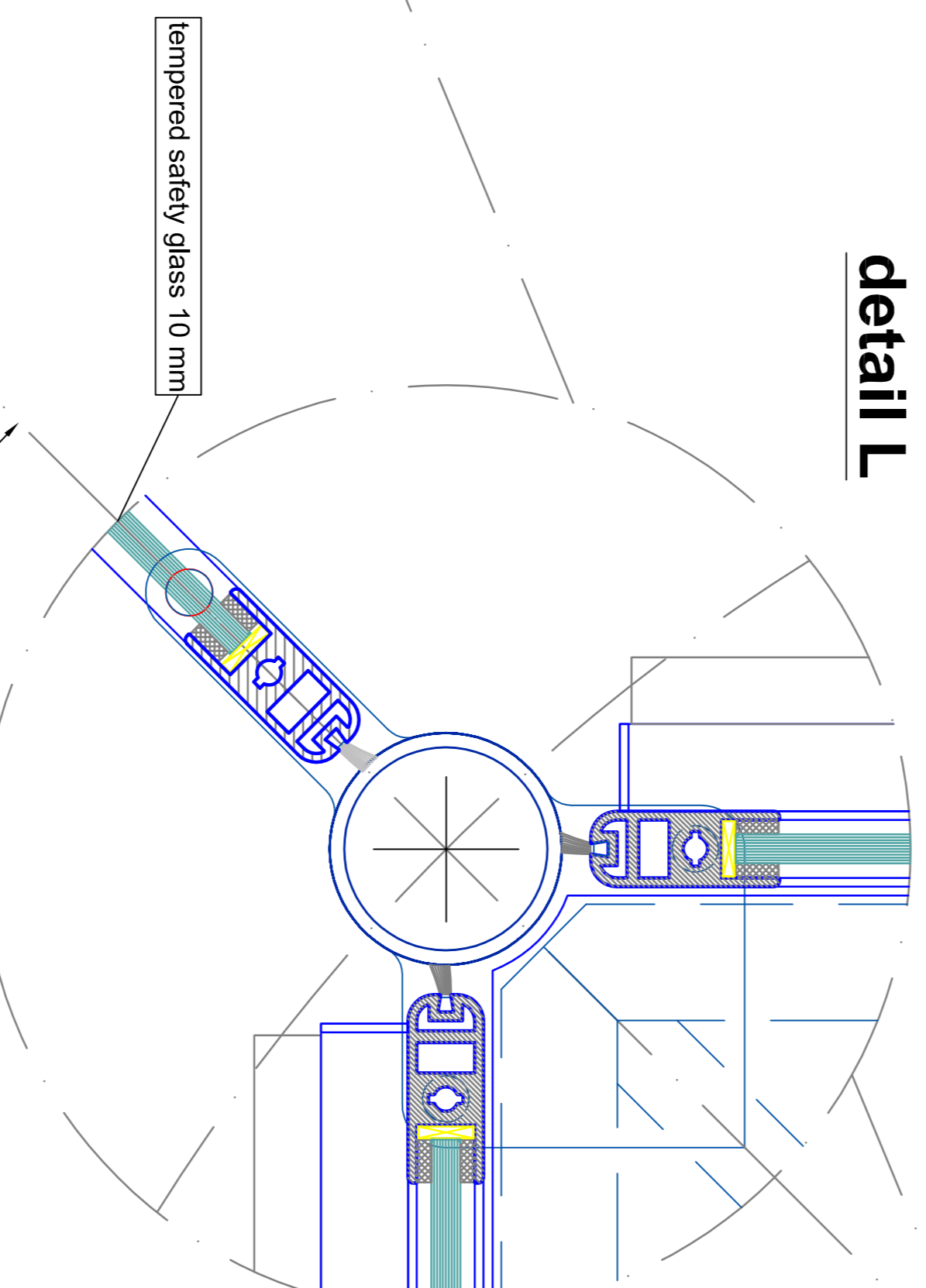
detail C



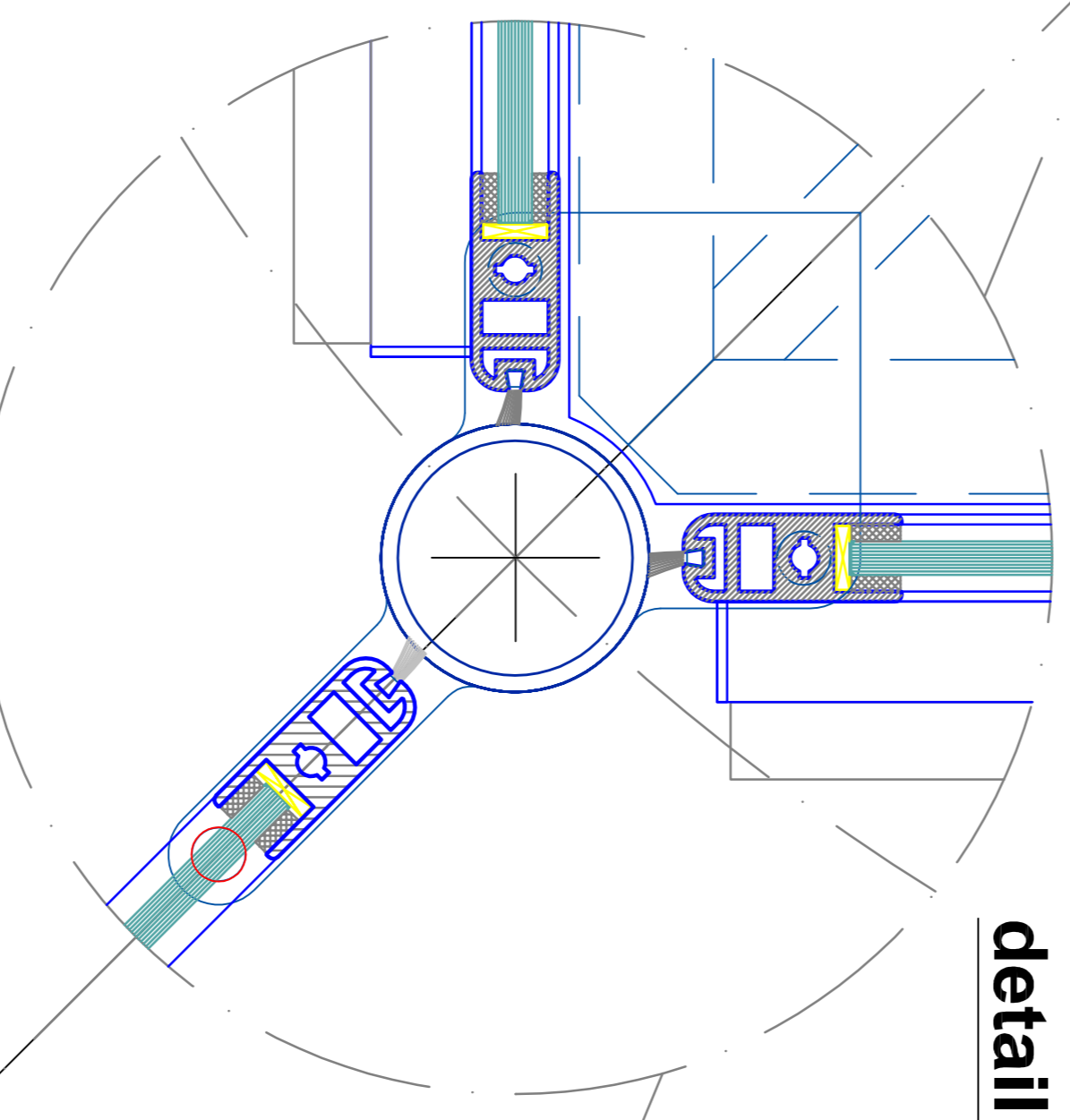
detail H



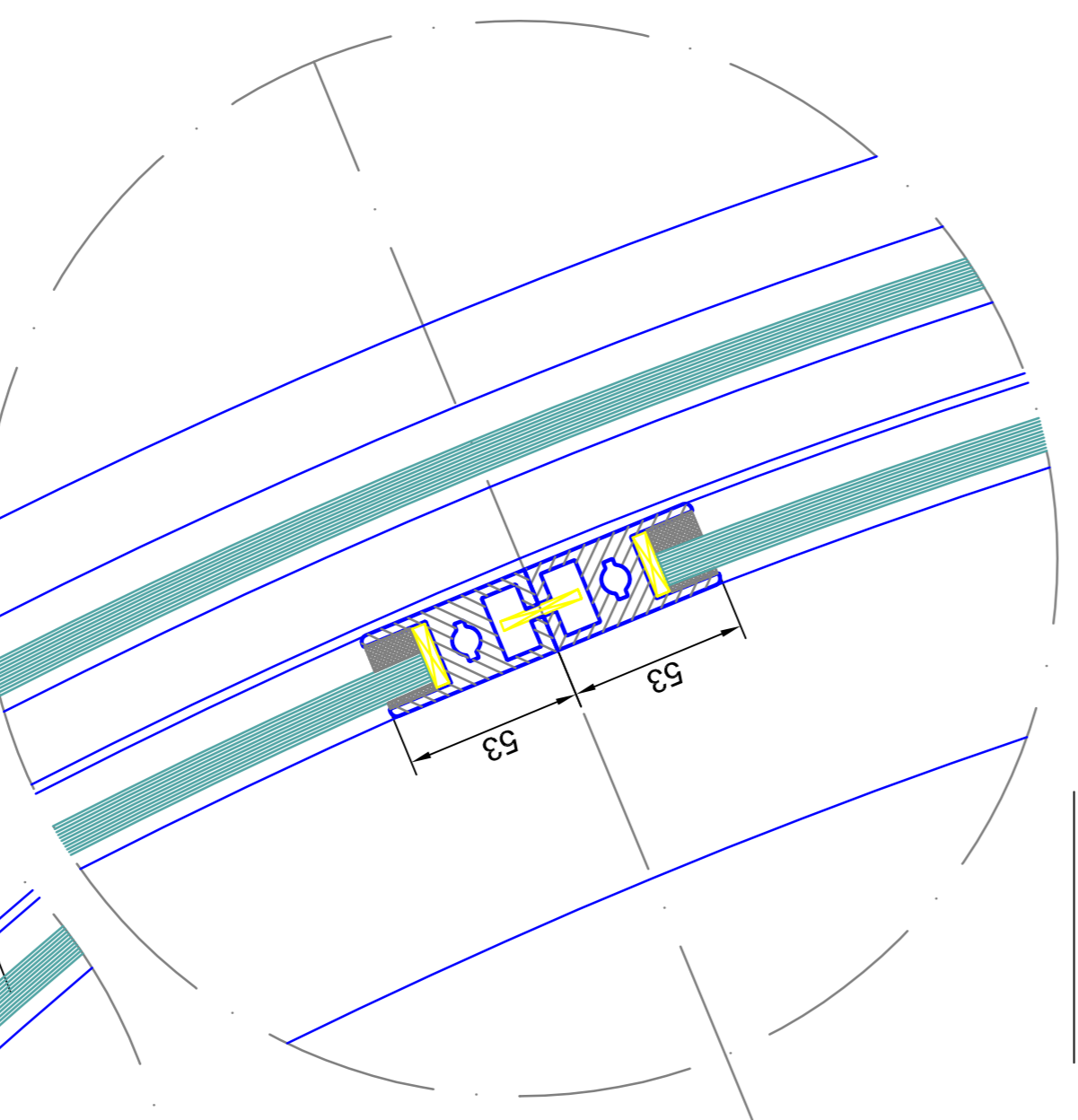
detail L



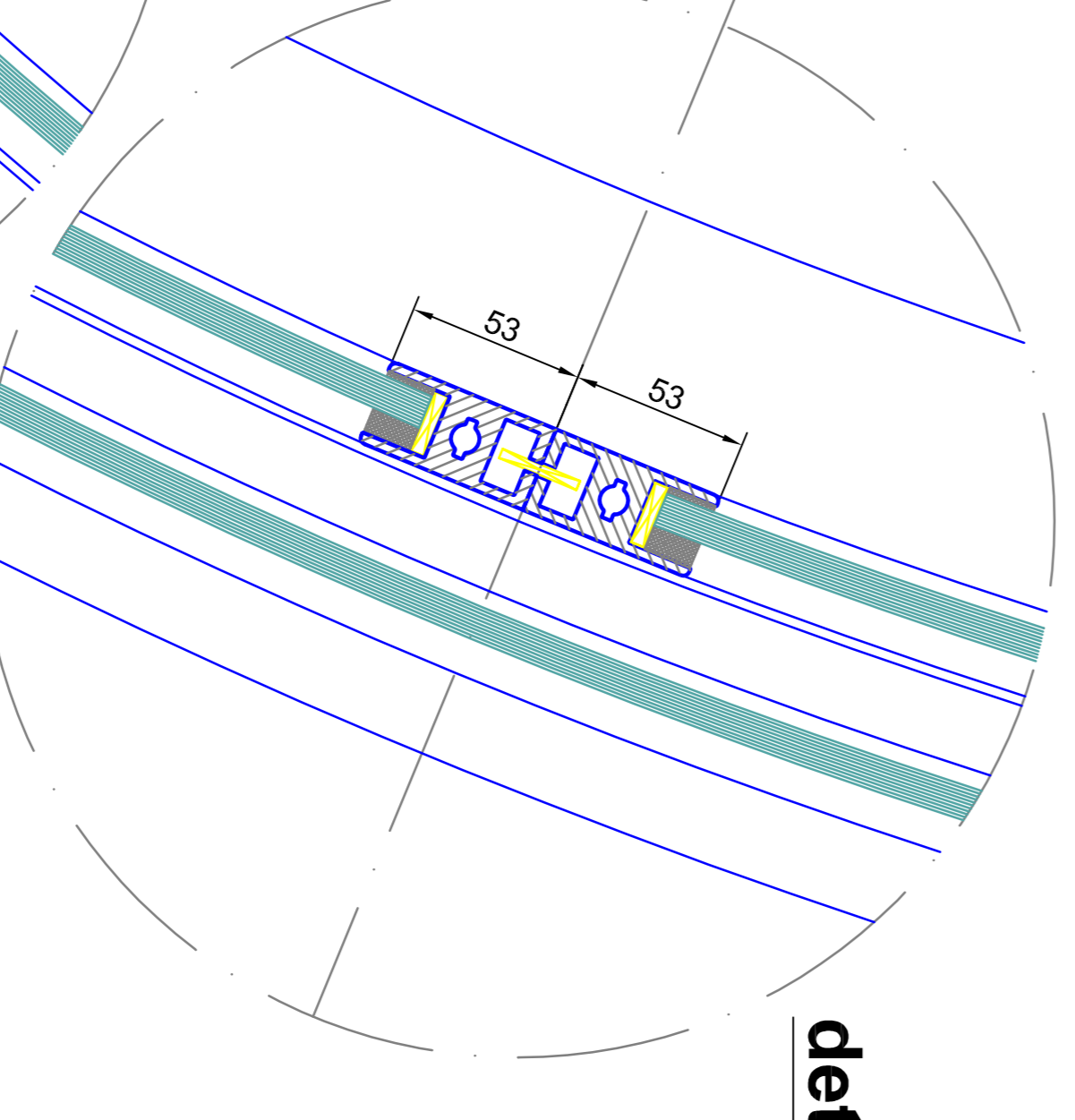
detail O



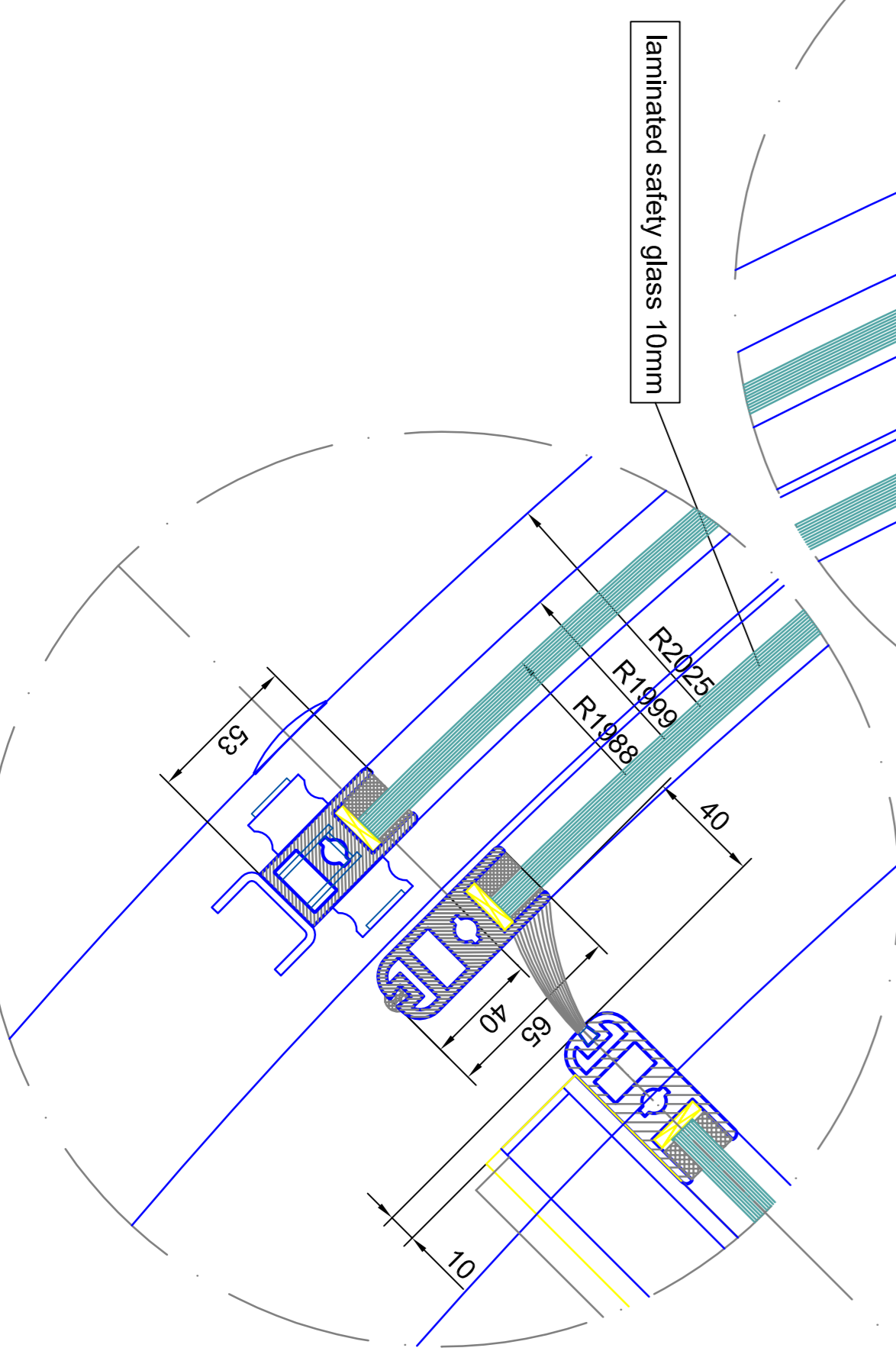
detail B



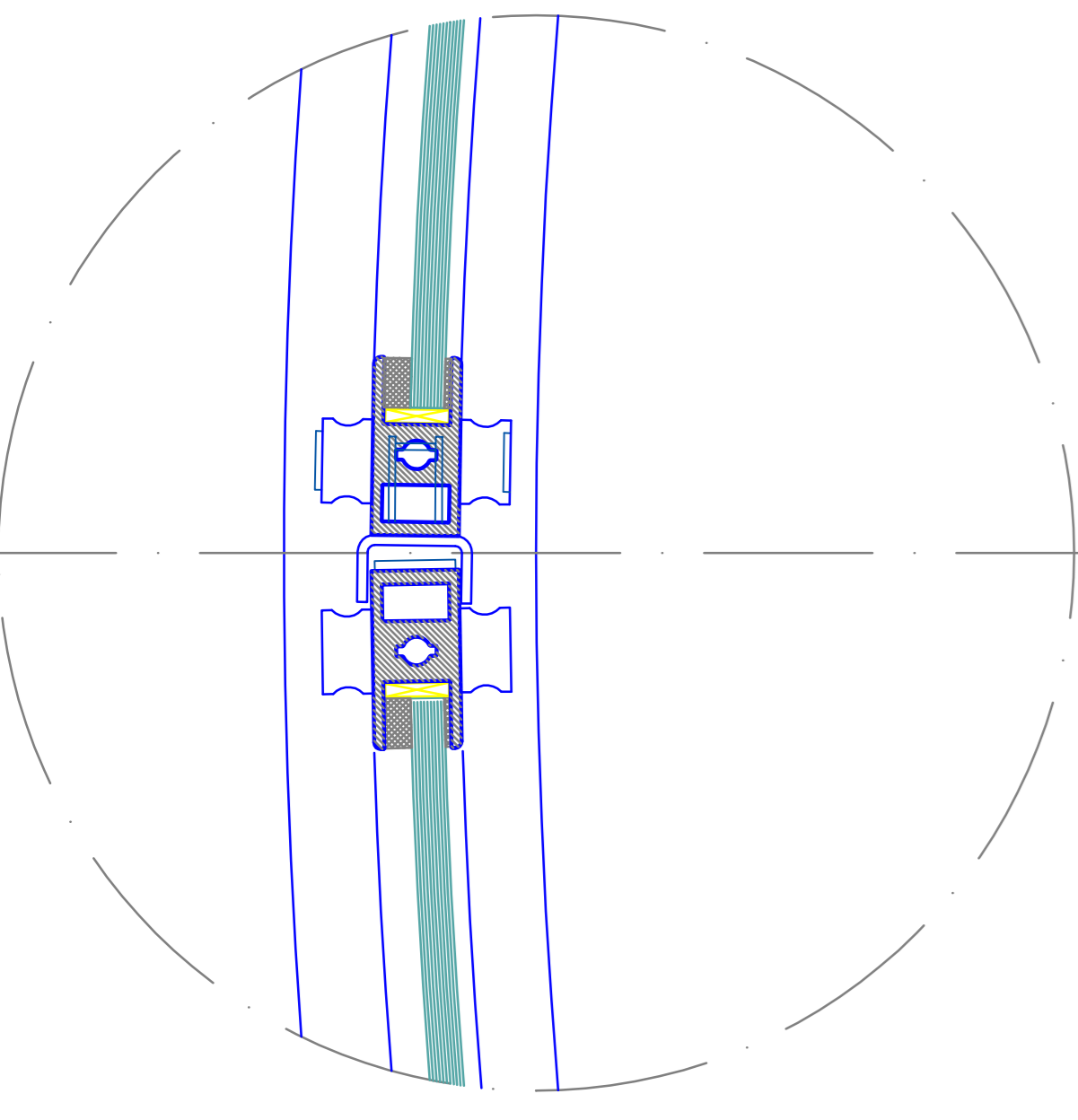
detail I



detail A



detail K



outside

<b>BLASI</b> Automatic Doors Def. Sec. Steel S-15 D. 1737 S. Milano		Tel. +390227 / 883 - 281 Fax. +390227 / 883 - 289 Email: info@blasi.com WWW: Blasi - Italy	
MODEL: K41-2 CONFIGURATION: 1200		MODEL: K41-VI/VINMA-39 SAMPLE DRAWING ONLY	
MATERIALS: Profile: 304 A4 Glass: Tempered safety glass 10 mm Laminated safety glass 10 mm		STANDARDS: EN 12444 EN 12445 EN 12446 EN 12447 EN 12448 EN 12449 EN 12450 EN 12451 EN 12452 EN 12453 EN 12454 EN 12455 EN 12456 EN 12457 EN 12458 EN 12459 EN 12460 EN 12461 EN 12462 EN 12463 EN 12464 EN 12465 EN 12466 EN 12467 EN 12468 EN 12469 EN 12470 EN 12471 EN 12472 EN 12473 EN 12474 EN 12475 EN 12476 EN 12477 EN 12478 EN 12479 EN 12480 EN 12481 EN 12482 EN 12483 EN 12484 EN 12485 EN 12486 EN 12487 EN 12488 EN 12489 EN 12490 EN 12491 EN 12492 EN 12493 EN 12494 EN 12495 EN 12496 EN 12497 EN 12498 EN 12499 EN 12500	