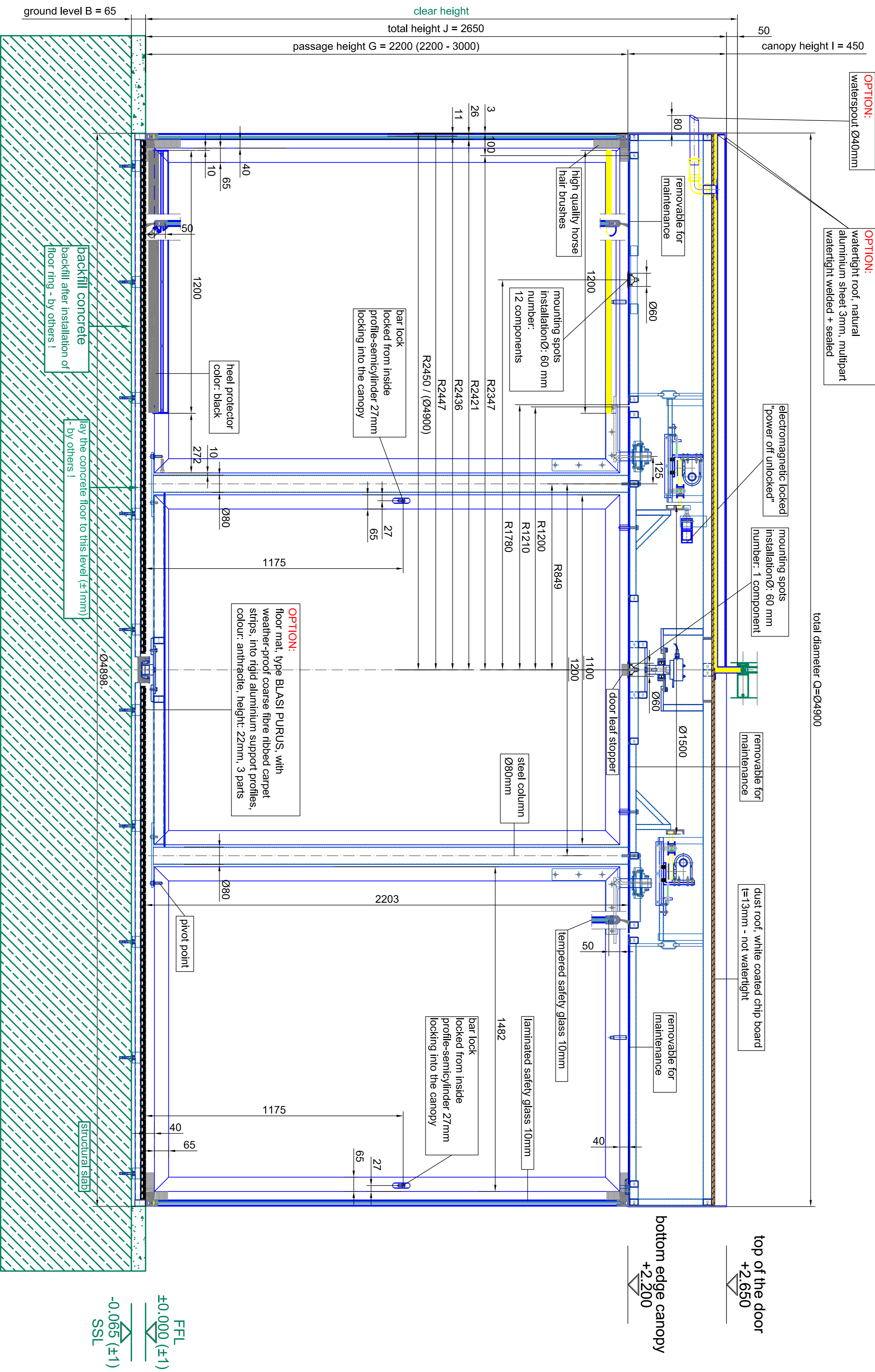


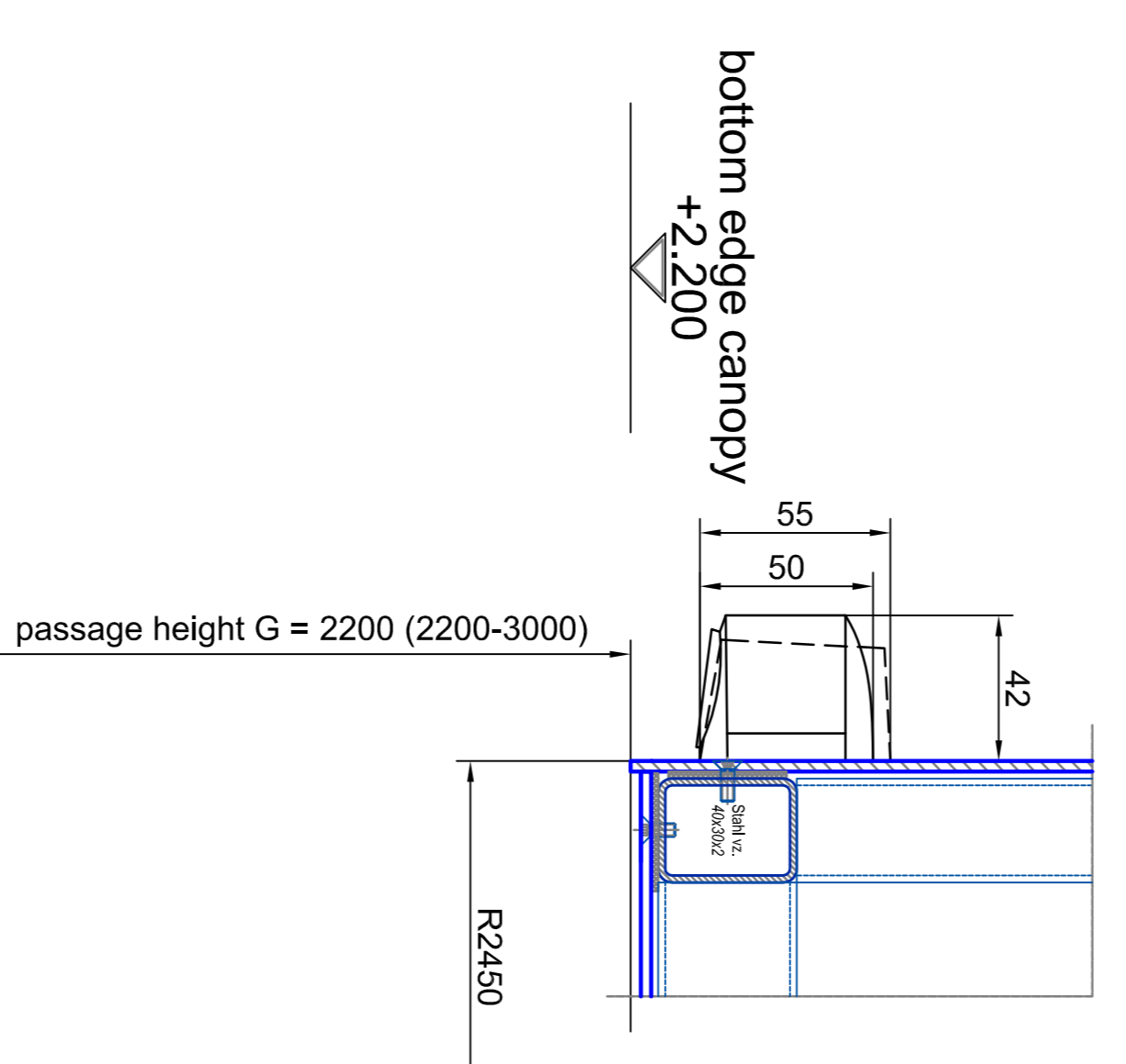
outside

vertical section

inside



vertical section-
passage area
A0 - M 1:2



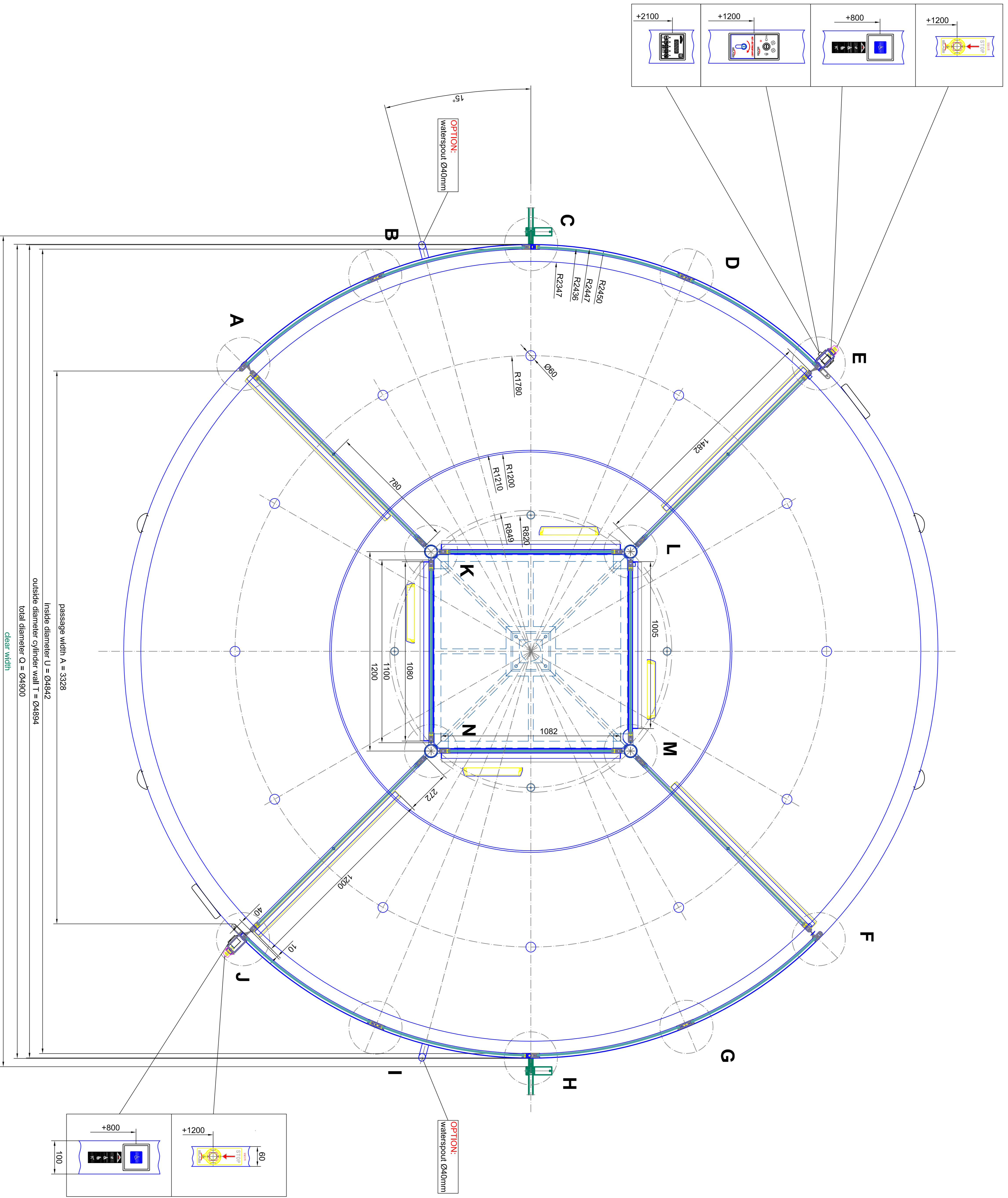
Material	tempered safety glass 10 mm	30x45	(DIN 9931)	tempered safety glass 10 mm
Material	tempered safety glass 10 mm	30x45	(DIN 9931)	tempered safety glass 10 mm

BLASI
B.L.A.S.I. G. & A. S. r.l.
Automatic Door
Cagliari - Street 5-15
D - 77172 Malibon
Tel. +39070 2 800 299
Fax. +39070 2 880 299
E-mail: info@blasio.it
www. Blasi - info

K41-VM49 Break Out
SAMPLE DRAWING ONLY

Scale: 1:10
Drawing No.:
Rev: 01

inside



passage width A = 3328
 inside diameter U = 2484.2
 outside diameter cylinder wall T = 2484.4
 total diameter C = 3328.0
 clear width

outside

horizontal section - door in standard position

Material	Aluminum	Material	Aluminum
Surface	Polished	Surface	Polished
Color	White	Color	White
Finish	Matte	Finish	Matte
Weight	150 kg	Weight	150 kg
Height	2100 mm	Height	2100 mm
Width	3328 mm	Width	3328 mm
Depth	100 mm	Depth	100 mm
Volume	0.5 m³	Volume	0.5 m³

BLASI
 B.L.A.S.I. S.p.A.
 Autostar Drive
 Calaber Street 5-15
 0-77972 Malborg

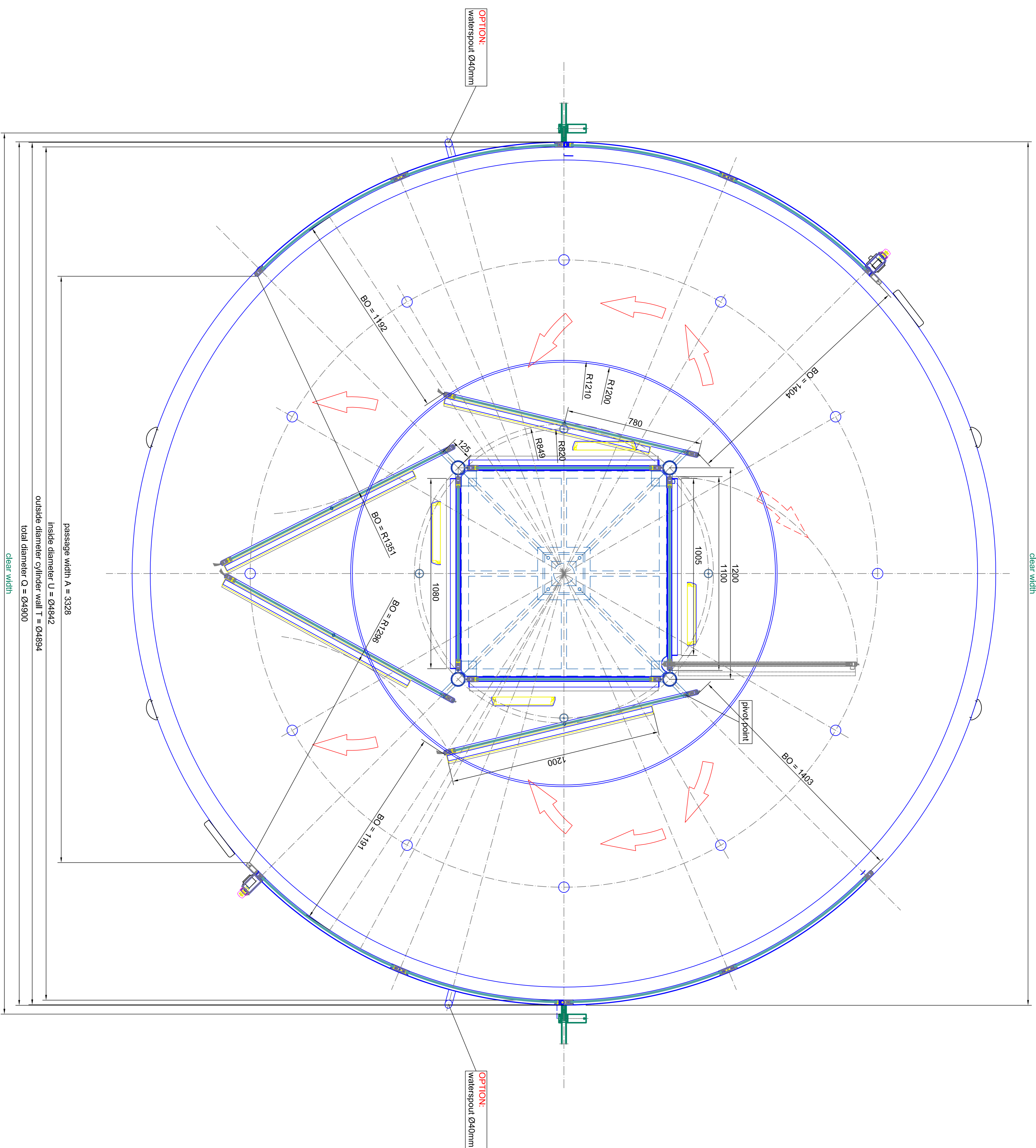
TEL: +390321 888-289
 FAX: +390321 888-288
 E-mail: info@blasio.it
 www.blasi.info

Project: **K41-VM49 Break Out**
 Customer: **SAMPLE DRAWING ONLY**

Scale: 1:50
 Date: 02/05/2024

inside

clear width



outside

passage width A = 3328
 inside diameter U = 04494
 outside diameter cylinder wall T = 04494
 total diameter Q = 04590
 clear width

horizontal section - door in break out position

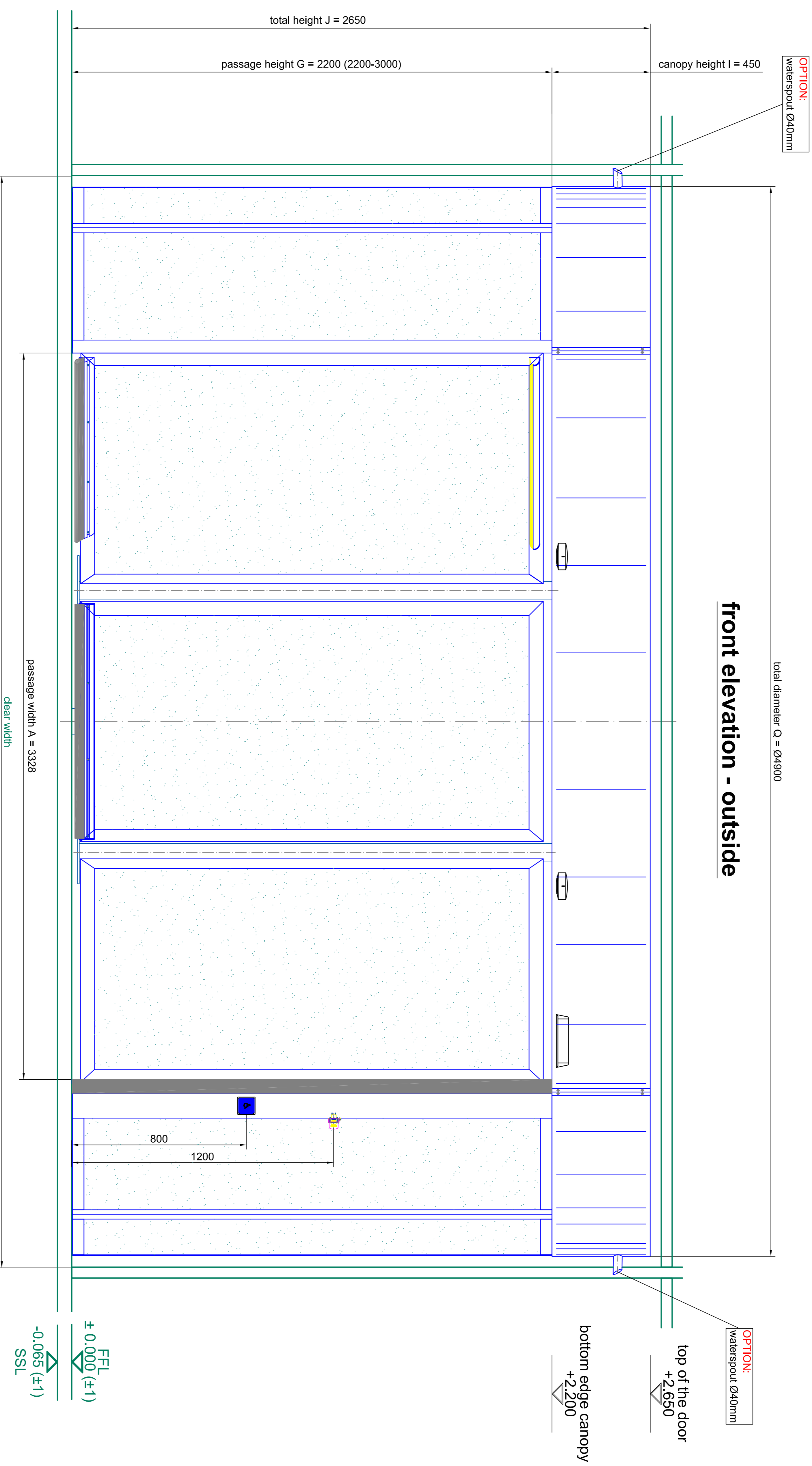
Material	tempered safety glass 10 mm	30x45	(EN 1993)	tempered
Material	tempered safety glass 10 mm			tempered

BLASI
 B.L.A.S.I. G. & A. S. r.l.
 Aut. Min. Sic. n. 1000/1997
 Cert. Inter. Sic. n. 15
 D. 77972 Maltoni

Tel. +39032 / 880 - 291
 Fax. +39032 / 880 - 299
 E-mail: info@blasio.it
 www. blasio . info

Model: K41-110
 Project: K41-110-149 Break Out
 Customer: SAMPLE DRAWING ONLY

Scale: 1:1
 Date: 02/05/2018
 Page: 02
 From: 05



Reference	At visible edges	30x45	(DN 7931)	All gasket material components must be selected to prevent
Shading	tempered safety glass 10 mm			tempered safety glass 10 mm

BLASI

B.L.A.S.I. G. & A. S. r.l.
Automatic Door
Cafè Street 5 - 15
0 - 77372 Malibon

Tel. +39032 7 800 - 291
Fax. +39032 7 800 - 290
E-mail: info@blasio.it
www.blasi.info

Project: **K41-VM49 Break Out**
SAMPLE DRAWING ONLY

Scale: 1:10
Date: 04/05/2024

Author: []
Designer: []
Checker: []
Approver: []

Sheet: 04
From: 05

The drawings in this set of the complete door to be delivered to the customer shall be subject to the conditions of sale on the website.

detail E

inside

detail F

bar lock
locked from inside
profile-semicylinder 27mm
locking into the canopy

detail D

bar lock
locked from inside
profile-semicylinder 27mm
locking into the canopy

detail L

detail M

bar lock
locked from inside
profile-semicylinder 27mm
locking into the canopy

detail G

22.5°

22.5°

22.5°

22.5°

22.5°

22.5°

22.5°

22.5°

22.5°

detail C

detail H

R2447
R2436
Ø43000

53 53

53 53

53 53

53 53

53 53

detail K

detail N

detail I

clear width

22.5°

22.5°

22.5°

22.5°

22.5°

22.5°

22.5°

22.5°

22.5°

22.5°

22.5°

22.5°

22.5°

22.5°

22.5°

22.5°

22.5°

detail B

detail O

detail J

detail P

detail Q

detail R

tempered safety glass 10 mm

70

53 53

53 53

53 53

53 53

53 53

detail A

detail J

detail I

detail P

detail Q

detail R

laminated safety glass 10mm

40

53 53

53 53

53 53

53 53

53 53

53 53

53 53

53 53

53 53

53 53

53 53

53 53

53 53

53 53

53 53

53 53

outside

BLASI		B.L.S. S.p.A. s.n.c.		Tel. +3902 7 802 291	
Autostar - Steel 5-15		Autostar - Steel 5-15		Fax. +39022 7 802 299	
D - 77172 Malibon		www. Blasi - info		E-mail: info@blasi.it	
Blasi		R41-VV49 Break Out		SAMPLE DRAWING ONLY	
Scale: 1:1		Sheet: 02		Total: 02	
Date: 05/2012		Revision: 01		Drawing: 02	
Author: [redacted]		Check: [redacted]		Approve: [redacted]	
Project: [redacted]		Contract: [redacted]		Customer: [redacted]	
Material: [redacted]		Quantity: [redacted]		Unit: [redacted]	
Reference: [redacted]		Drawing: [redacted]		Sheet: [redacted]	
Revision: [redacted]		Date: [redacted]		By: [redacted]	
Checked: [redacted]		Date: [redacted]		By: [redacted]	
Approved: [redacted]		Date: [redacted]		By: [redacted]	

Notes:
 1. All visible surfaces (EN 1993-1-1) must be executed in galvanized steel.
 2. All painted metal components must be executed in galvanized steel.
 3. Laminated safety glass 10 mm