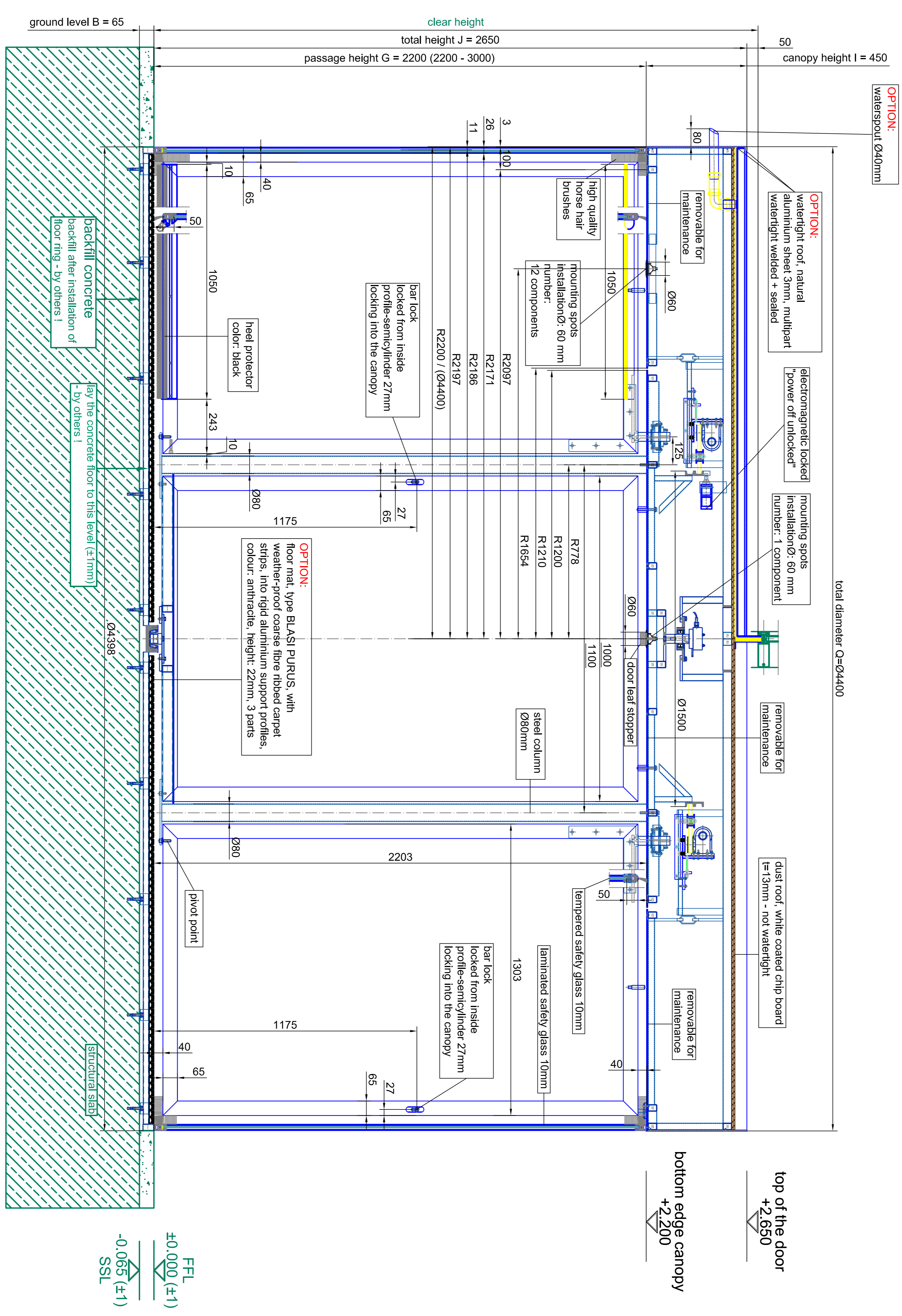


outside

vertical section

inside



top of the door
+2.650

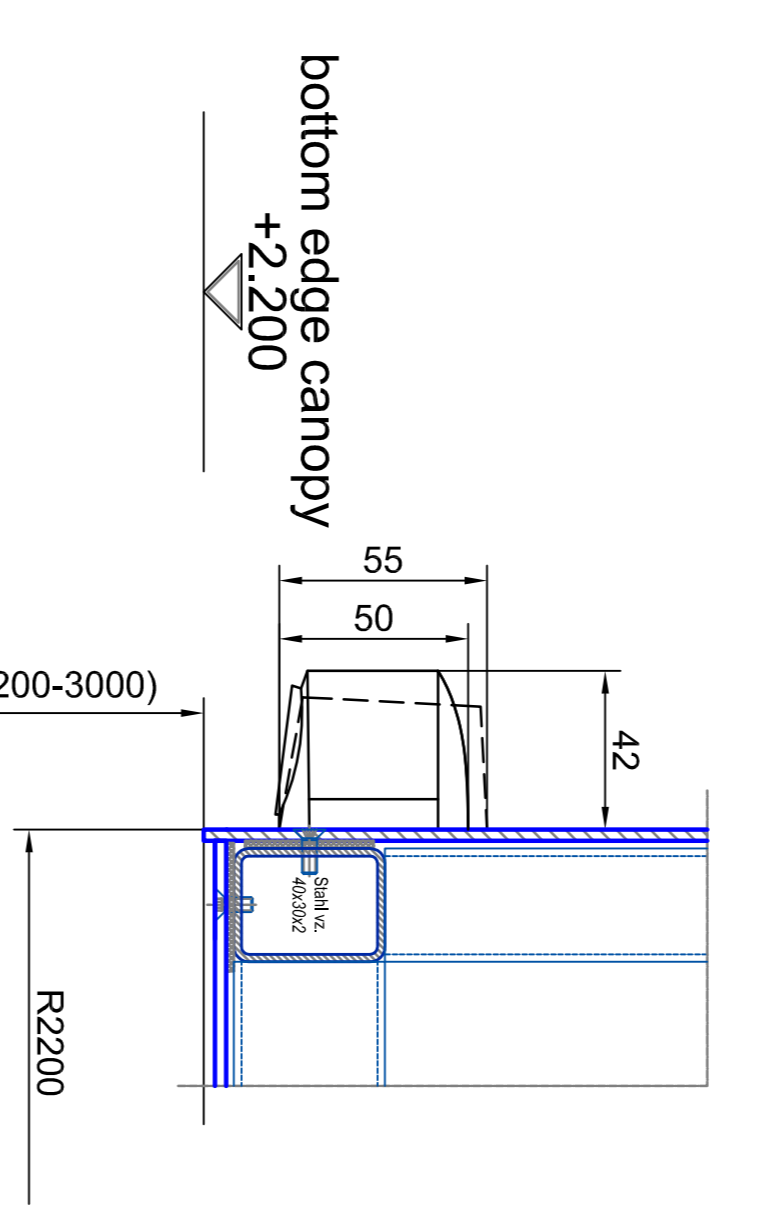
bottom edge canopy
+2.200

FEL
±0.000 (+1)

SSL
-0.065 (+1)

vertical section -
passage area

A0 - M 1:2



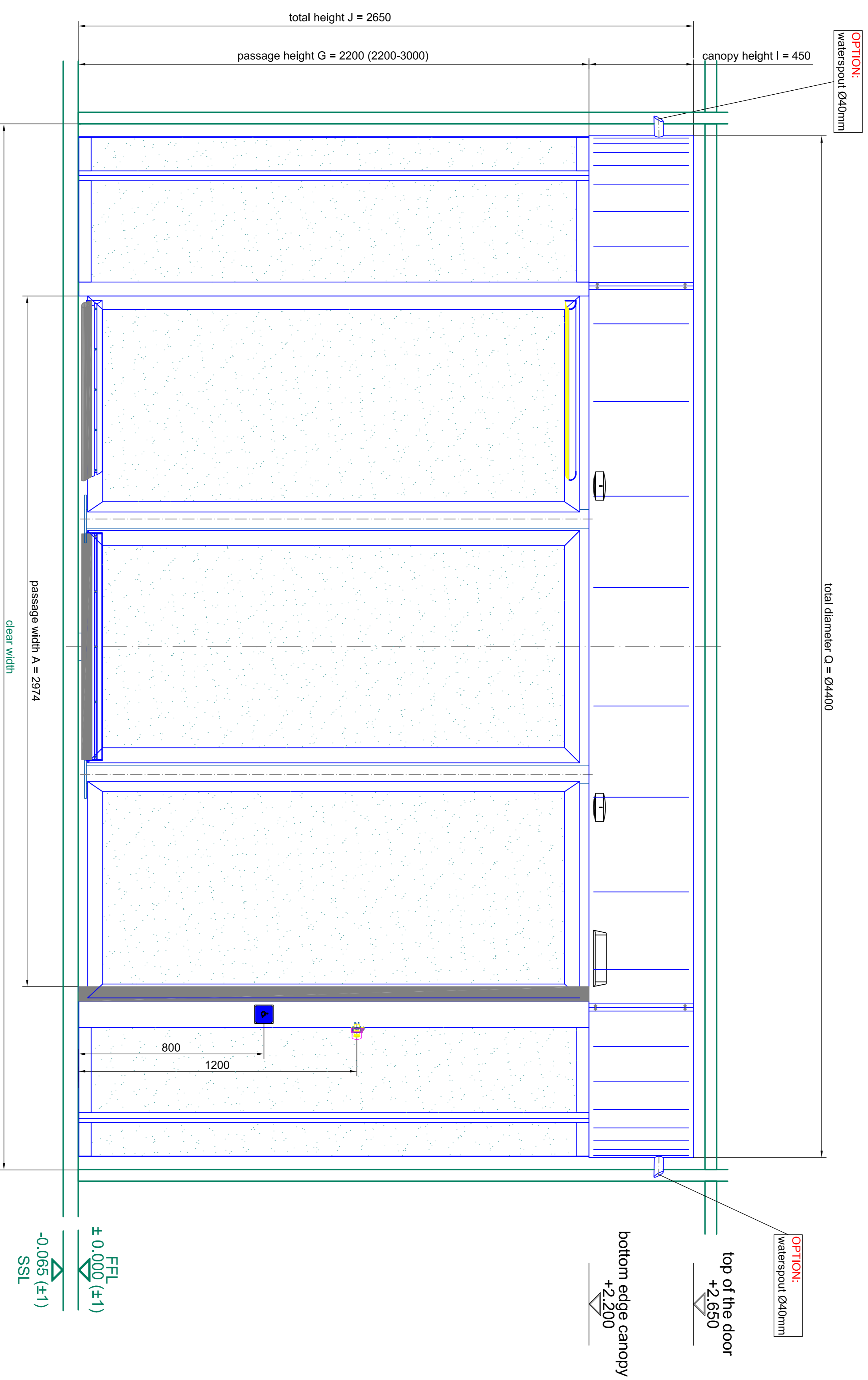
Blade	As visible on view	As specified components must be selected by customer
Shield	30x45 (DN 9991)	tempered safety glass 10 mm
Panel	Conical	tempered safety glass 10 mm
Frame	Modular	
Accessories		
Door		
Hardware		
Seals		
Paint		
Other		

BLASI
 B.L.S.I. G a.s. - M
 Autostar Drive
 Cell Beer - Street 5-15
 0 - 77772 Mailberg
 T4 - 48703 / 887 - 291
 F4 - 48702 / 887 - 288
 E-mail: info@blasi.it
 www - Blasi - info

K41-VM44 Break Out
 SAMPLE DRAWING ONLY

Scale: 1:10
 Date: 04

front elevation - outside



Reference	AS 1905.1-2005	AS 1905.1-2005	AS 1905.1-2005
Standard	tempered safety glass 10 mm	tempered safety glass 10 mm	tempered safety glass 10 mm
Material	304 ss	304 ss	304 ss
Finish	brushed	brushed	brushed

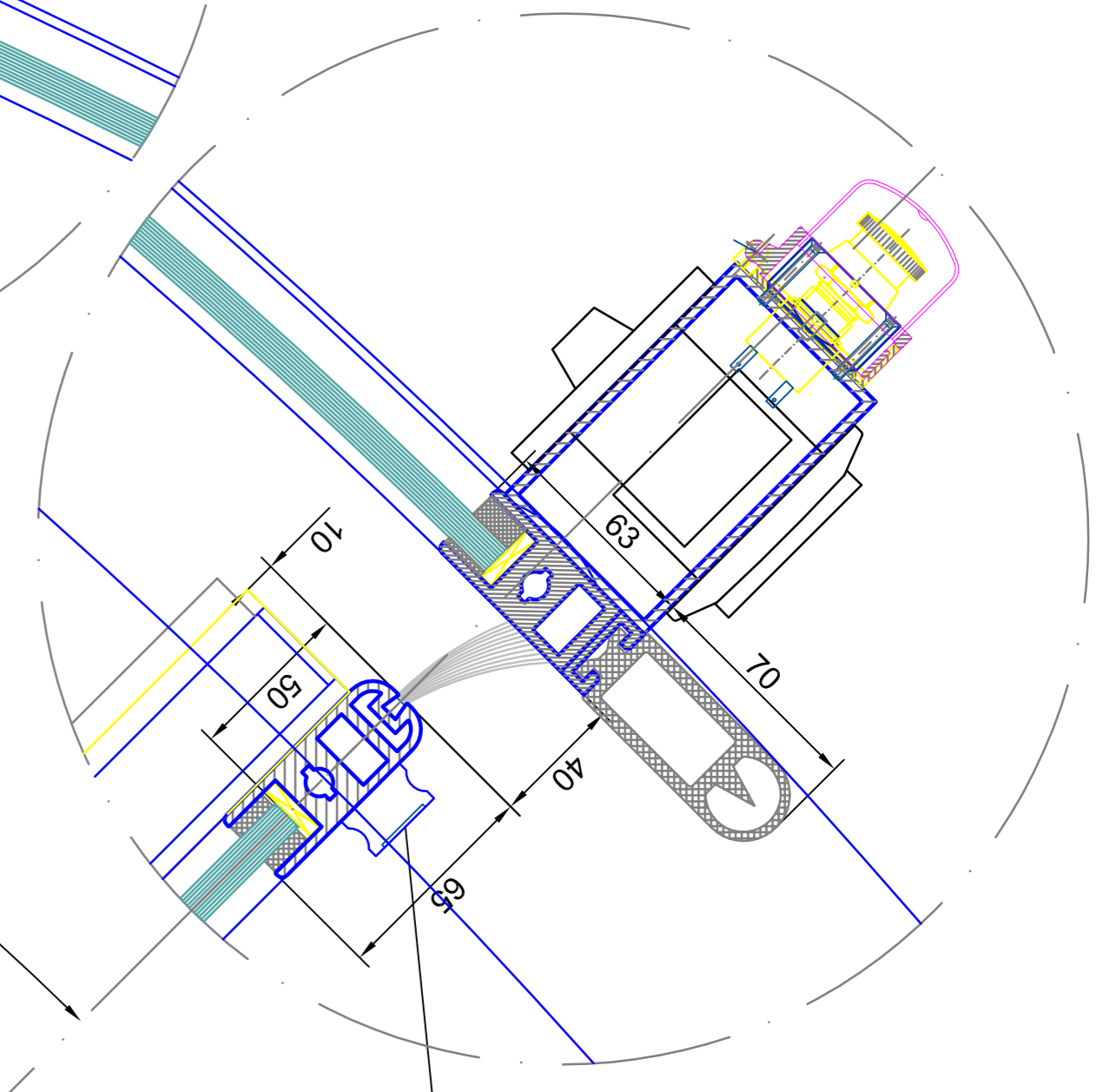
BLASI
 B.L.A.S.I. G. & A. S.p.A.
 Aut. Min. Sic. n. 1000/2001
 Cert. Inter. Sic. n. 1000/2001
 D. 77772 Malindi

44 - 44032 / 001 - 291
 Tel. +39 0322 / 881 - 298
 E-mail: info@blasi.it
 www.blasi.info

K41-VV44 Break Out
 SAMPLE DRAWING ONLY

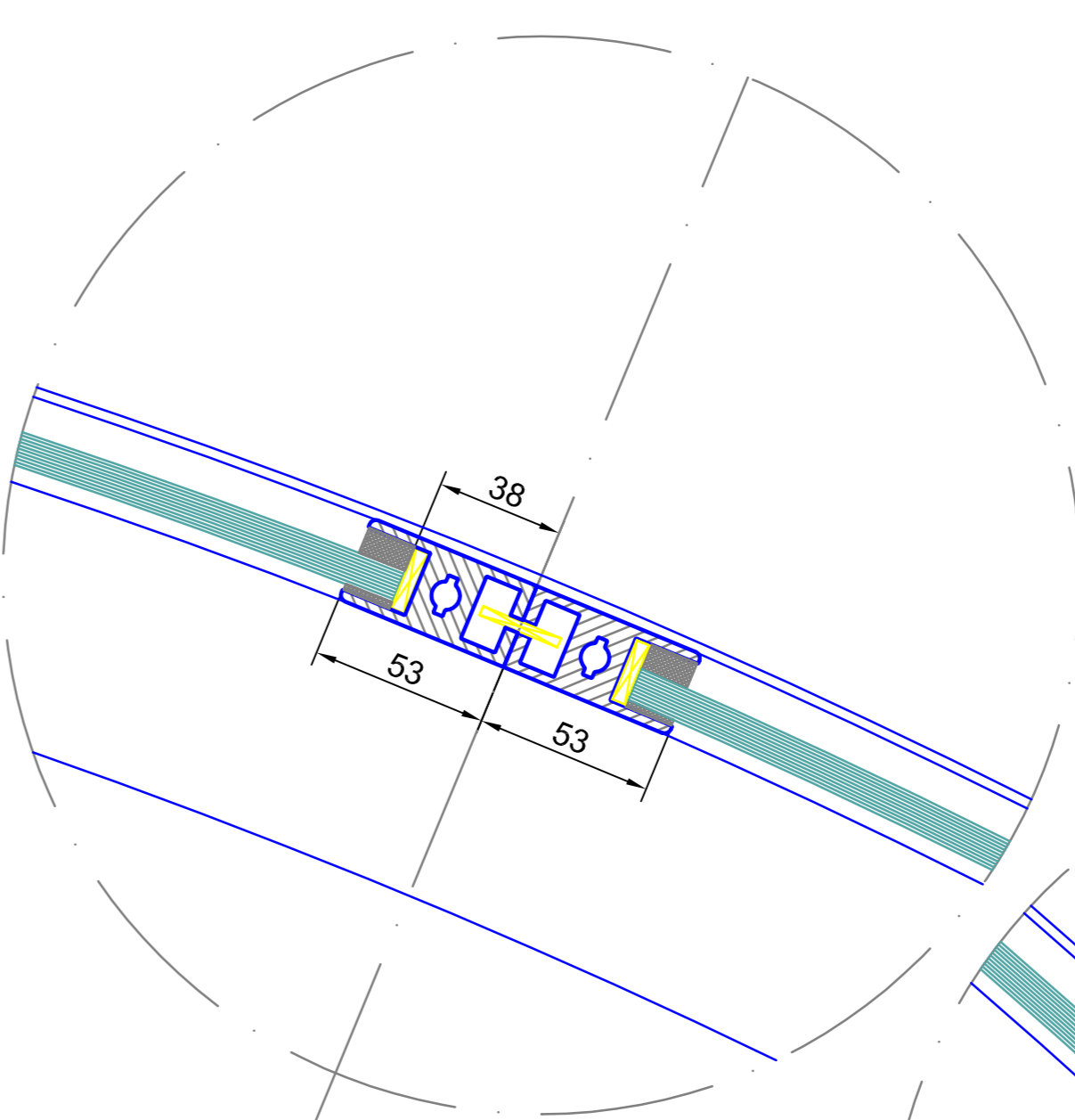
Scale: 1:10
 Date: 03/04/2024
 Page: 03 of 04

detail E

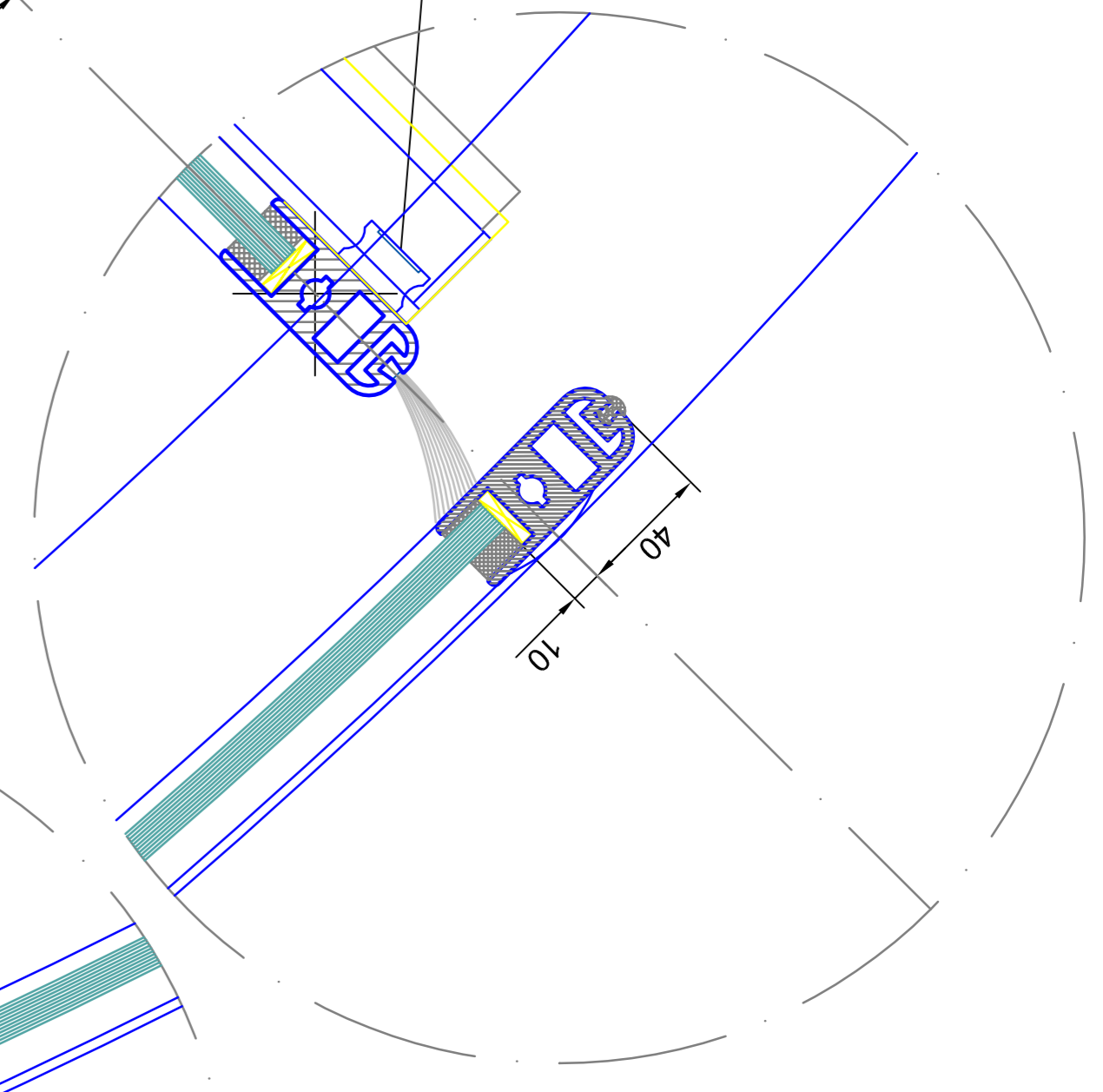


inside

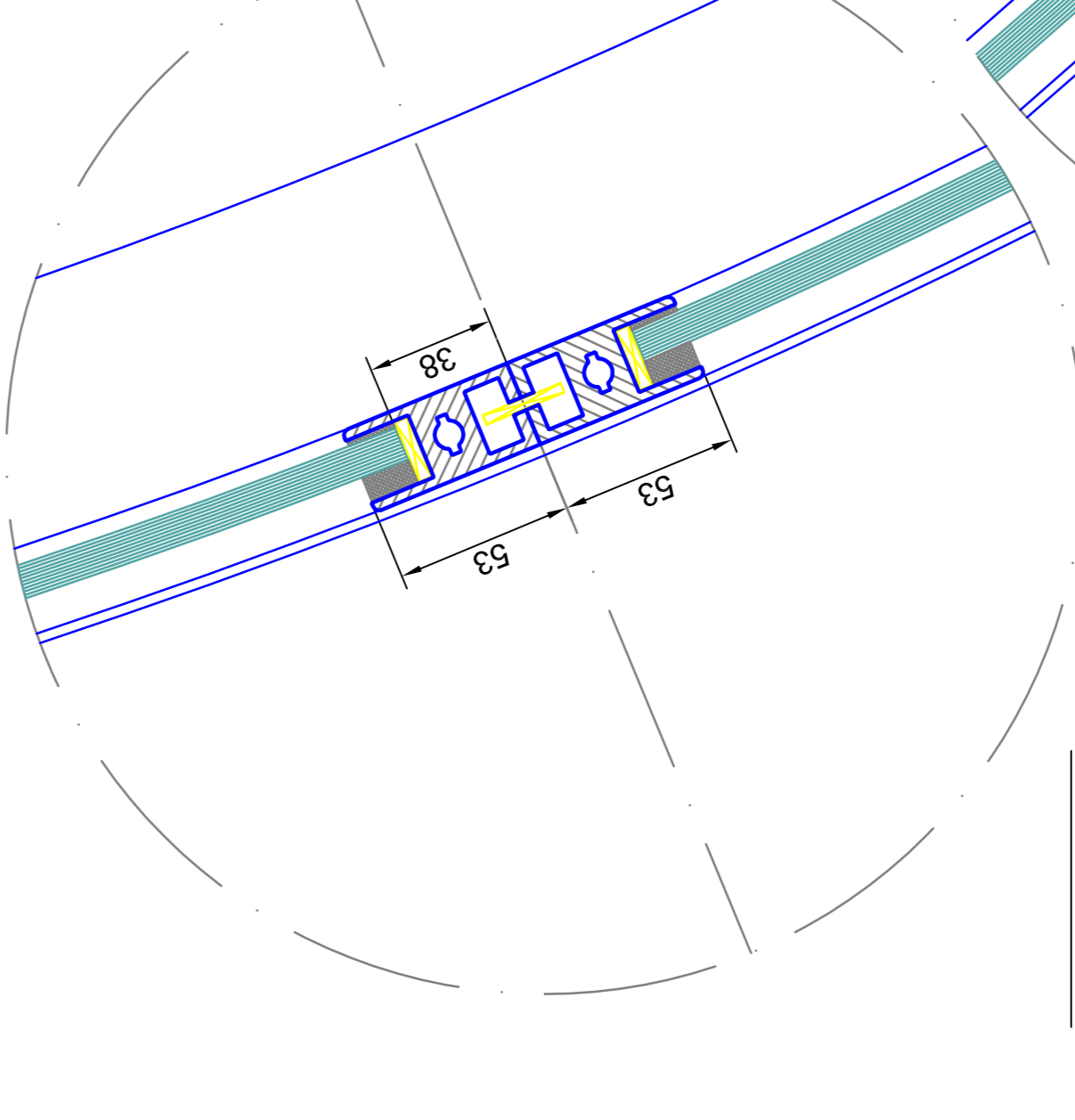
detail D



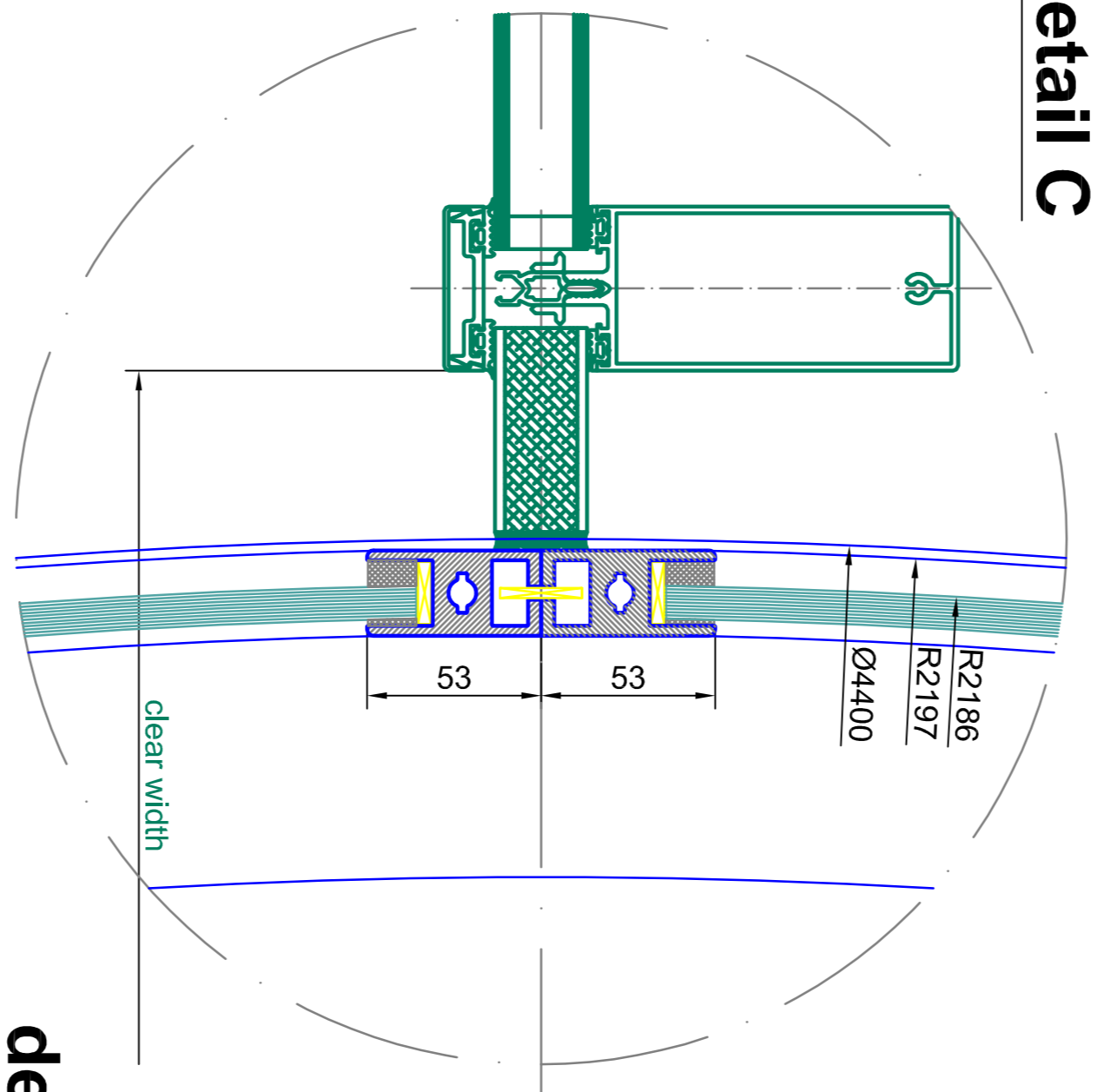
detail F



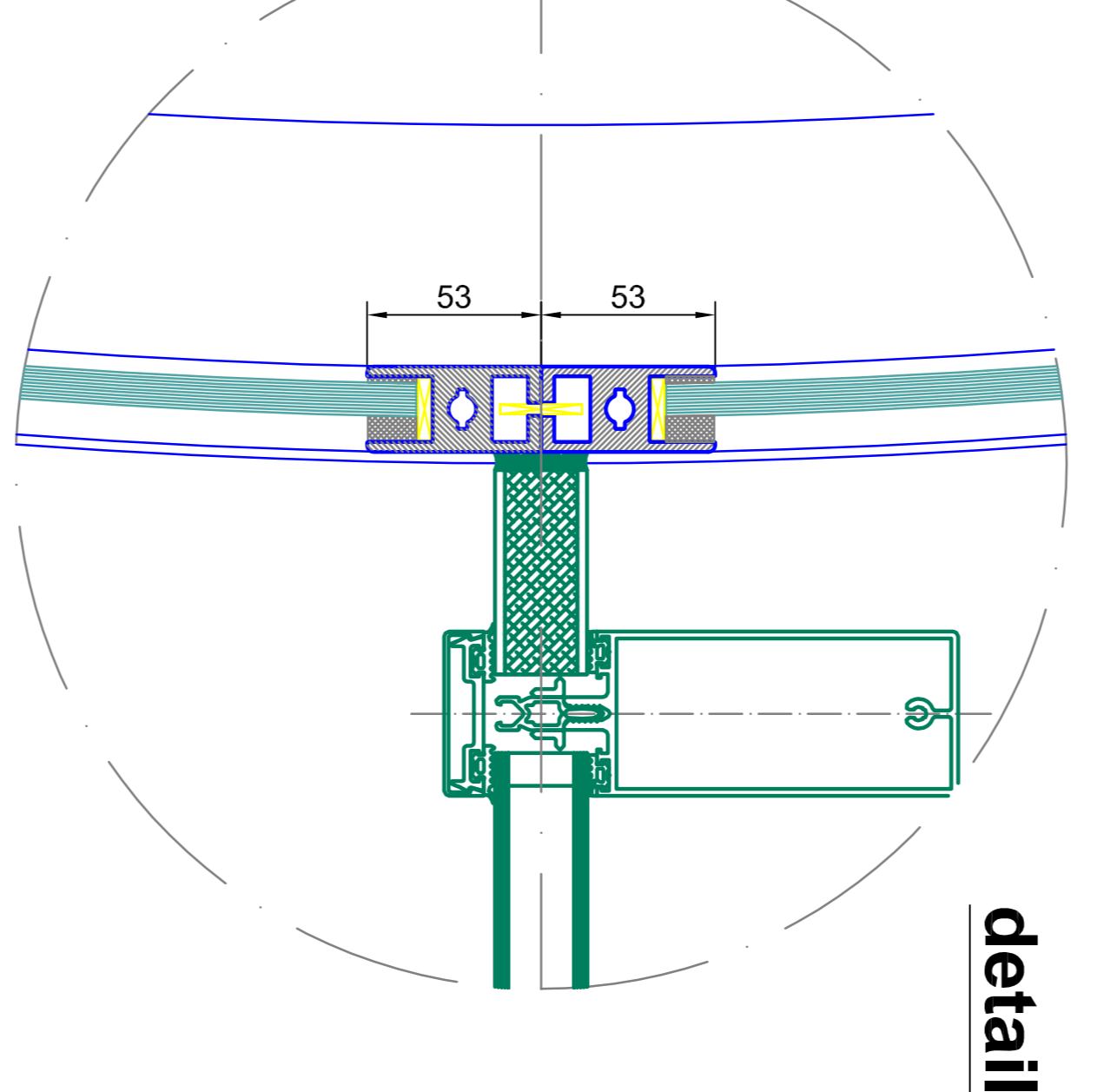
detail G



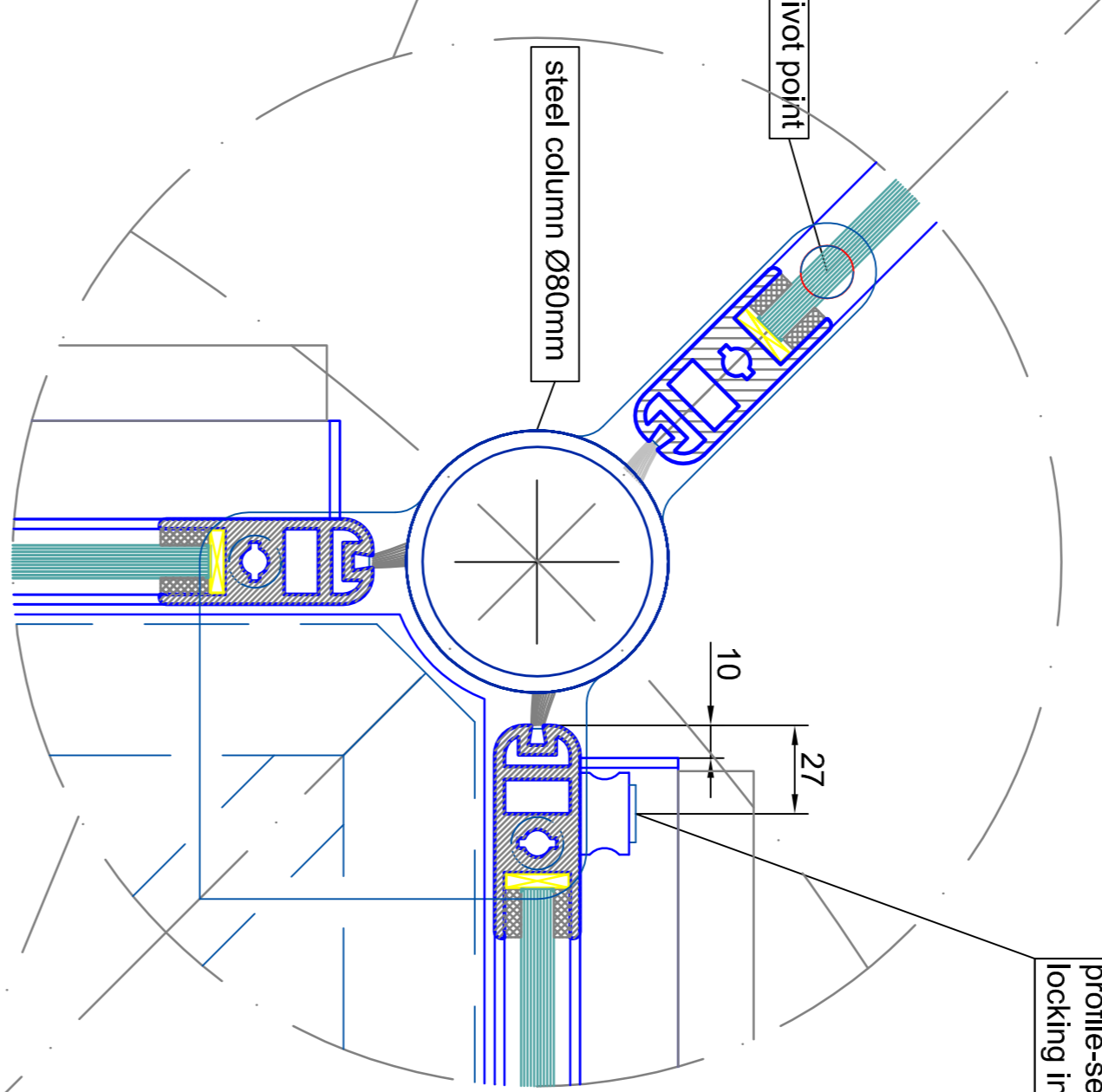
detail C



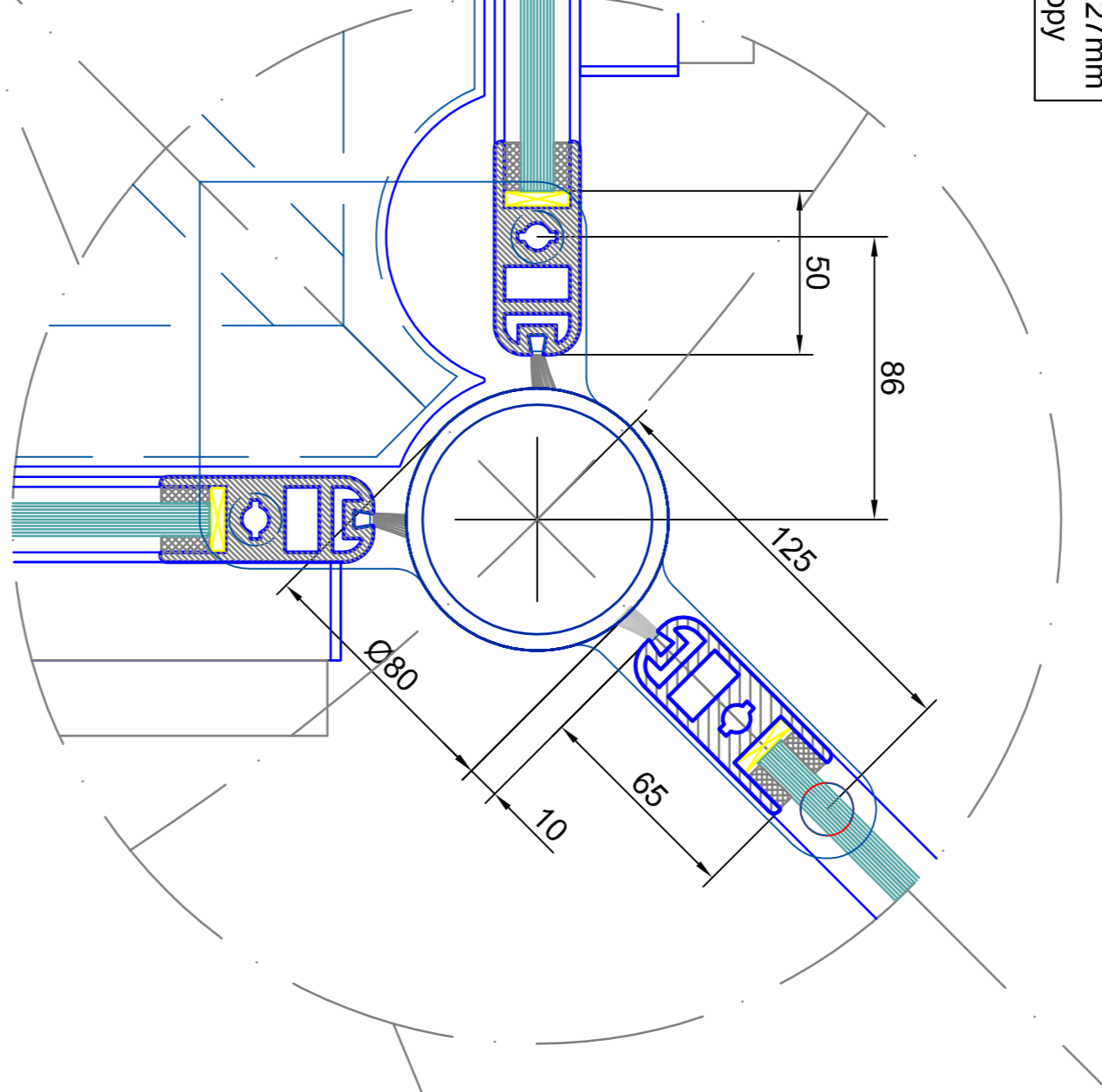
detail H



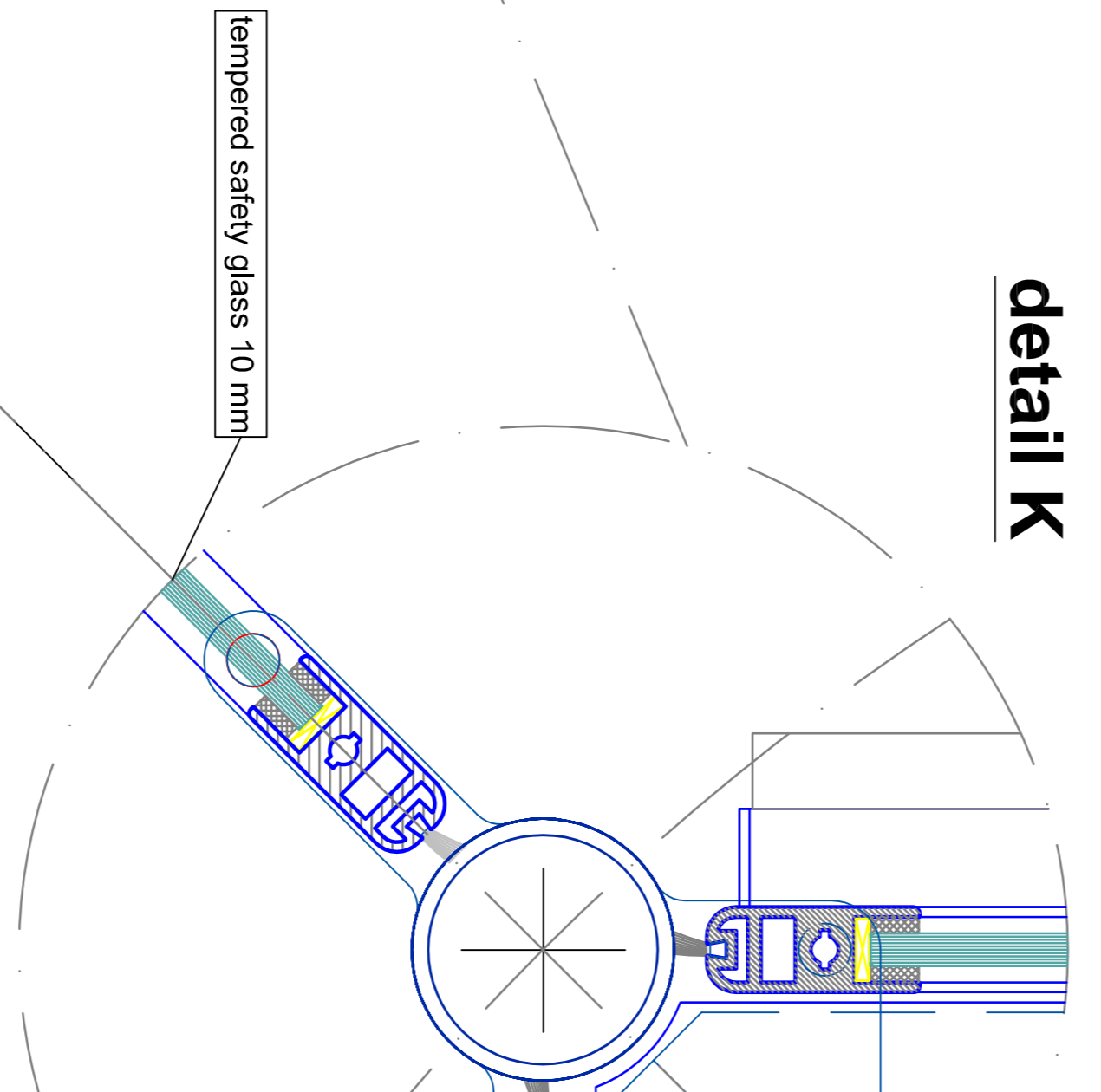
detail L



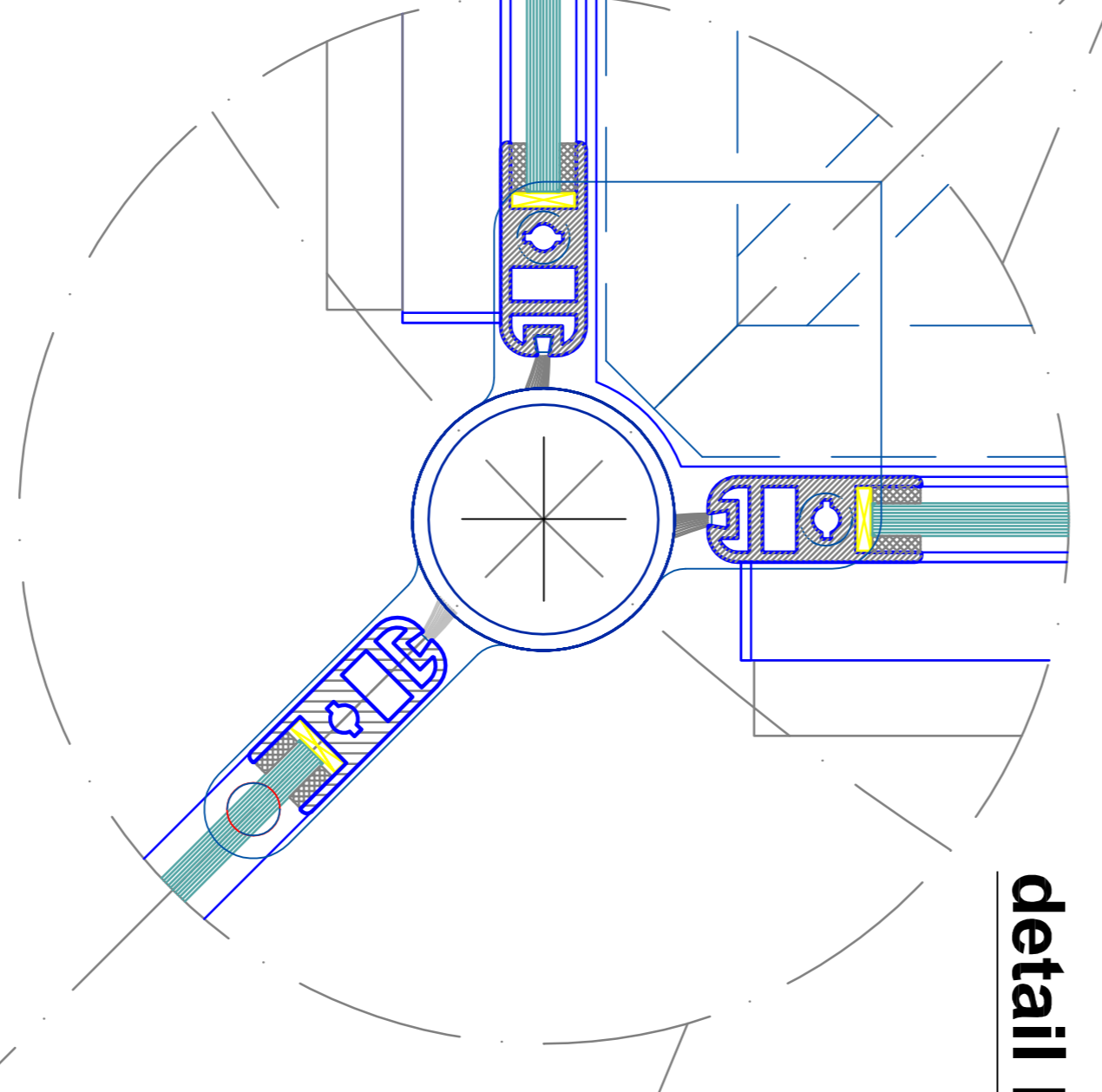
detail M



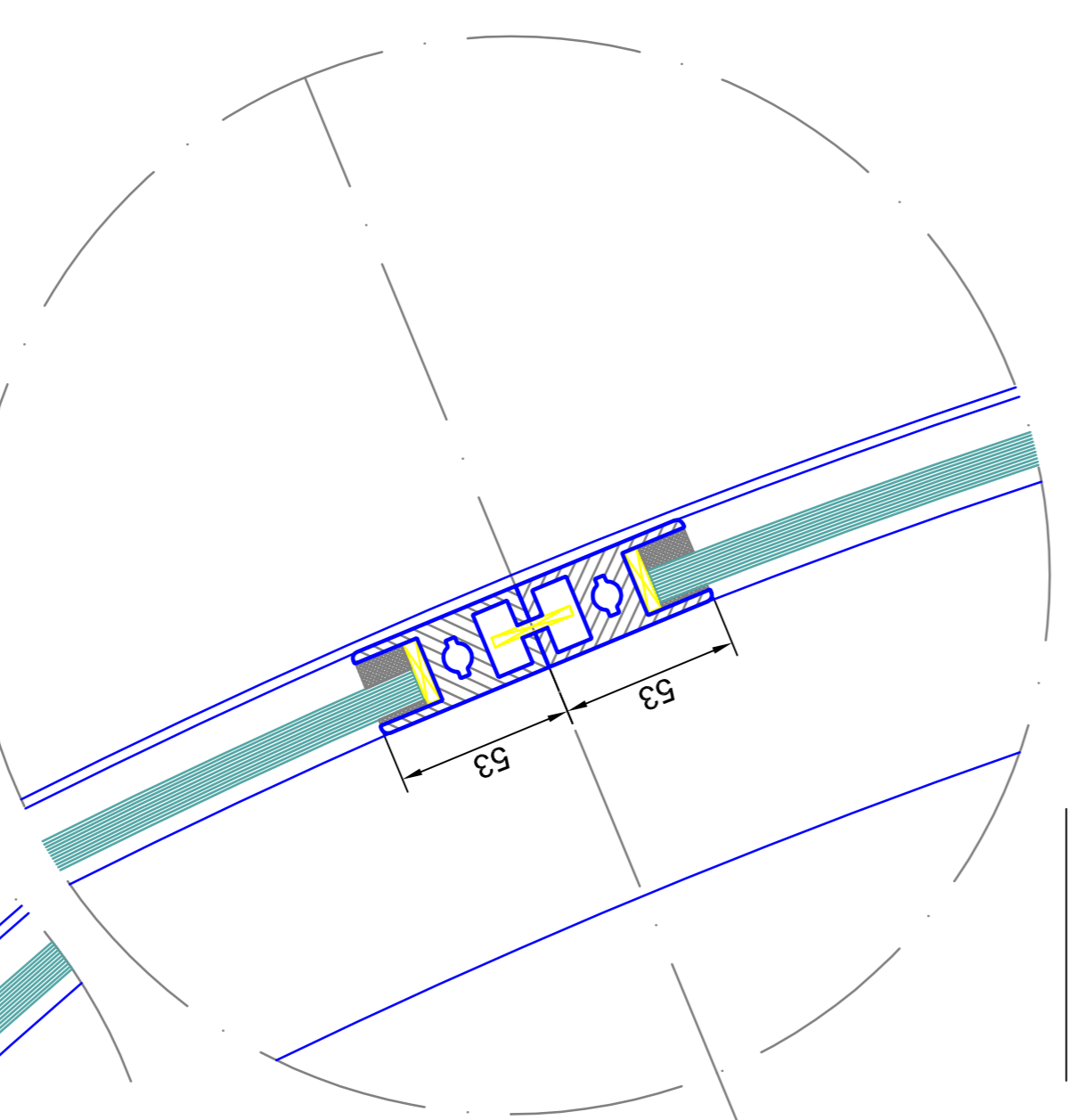
detail K



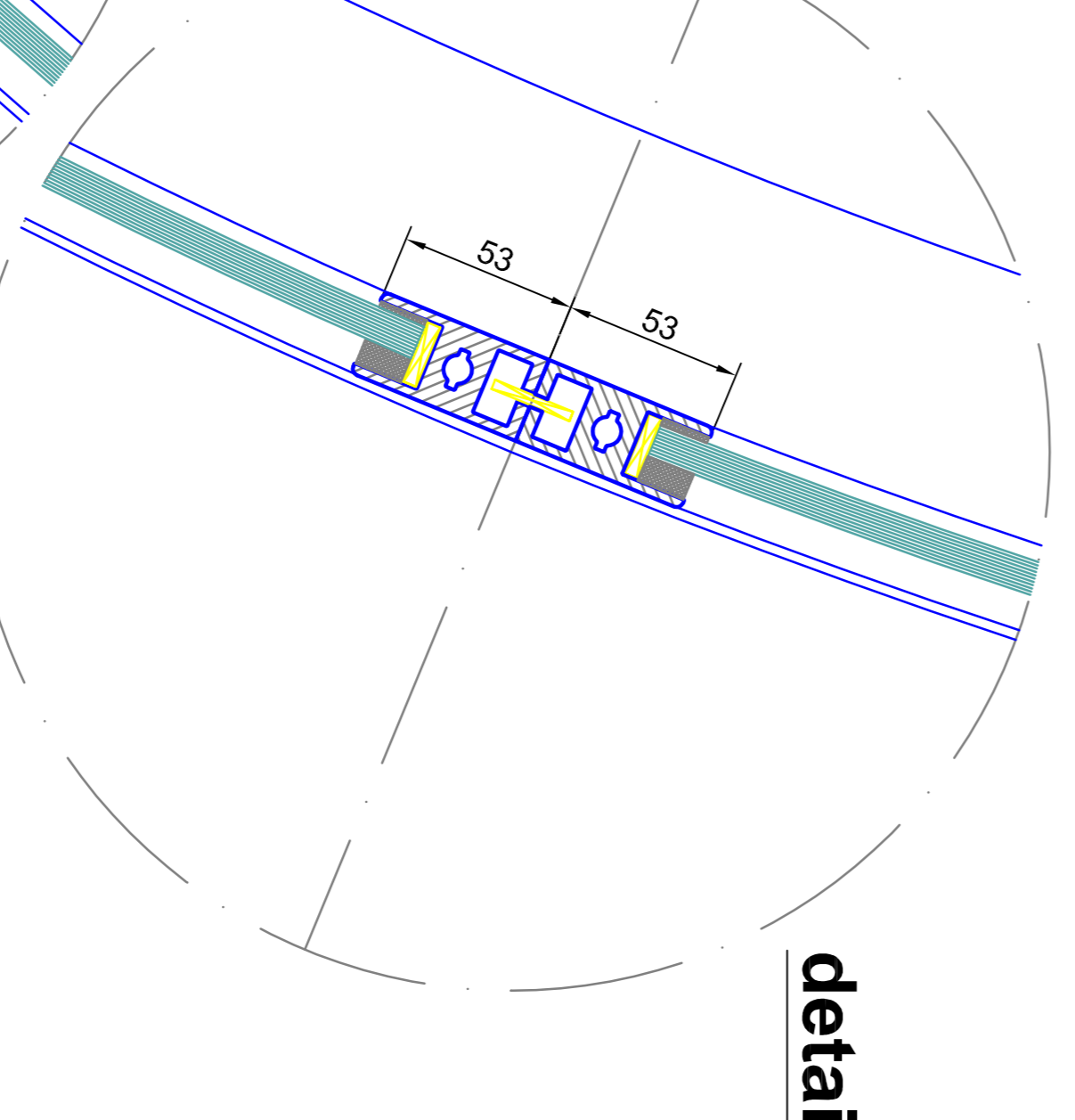
detail N



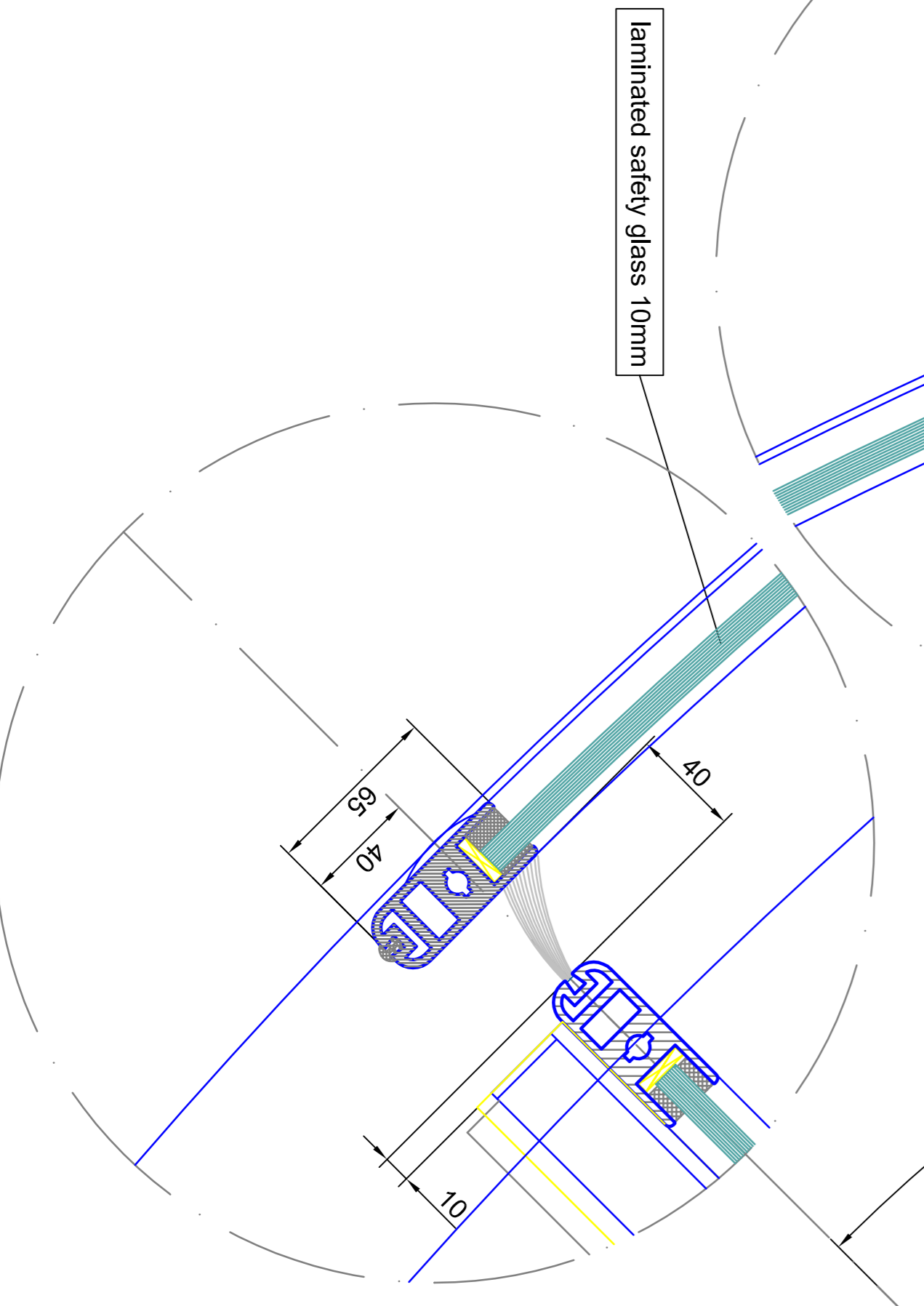
detail B



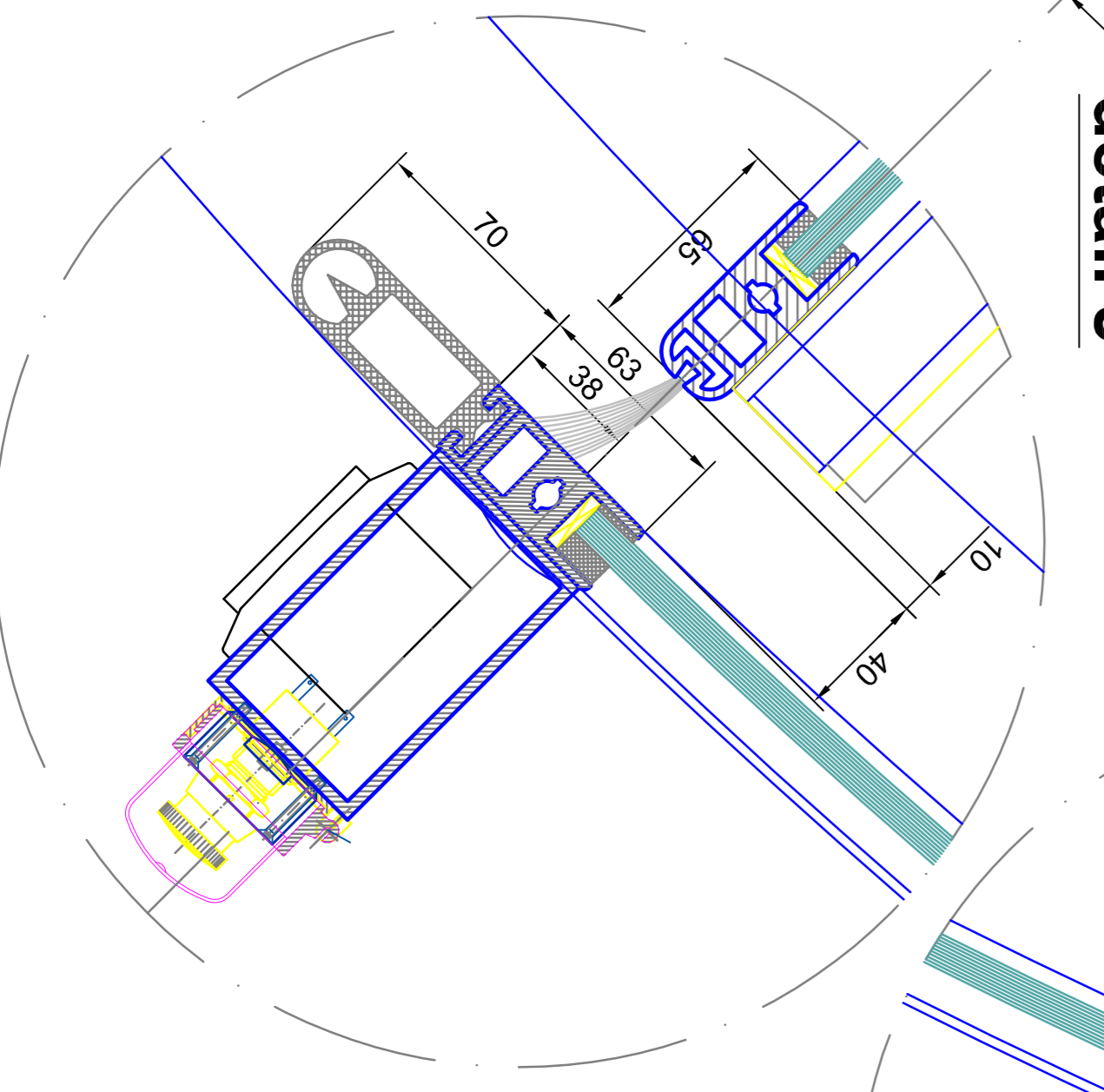
detail I



detail A



detail J



outside

<p>BLASI B.L.A.S.I. S.p.A. Autostar, Duino - 10130 C.so Ferro, 5 - 10130 D. 77372 Malles</p>		<p>Tel. +39011 200.290 Fax. +39011 200.299 E-mail: info@blasio.it www.blasio.it</p>	
<p>Project: R41-VV44 Break Out Drawing: SAMPLE DRAWING ONLY</p>		<p>Scale: 1:1 Date: 04/04/2012</p>	
<p>Material: tempered safety glass 10 mm</p>		<p>Standard: EN 1062-1</p>	
<p>Notes: All parts related components must be executed in stainless steel</p>		<p>Notes: tempered safety glass 10 mm</p>	