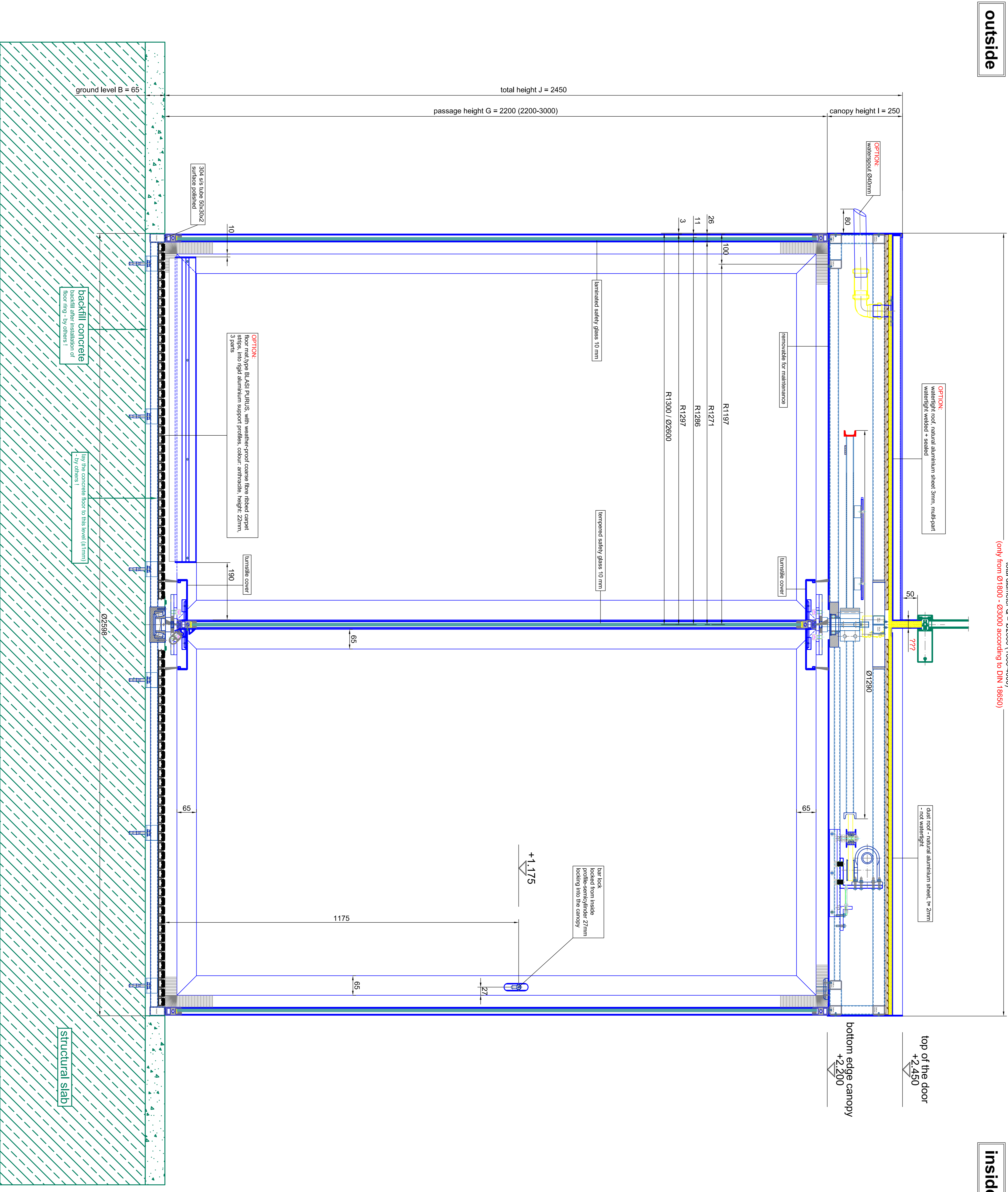


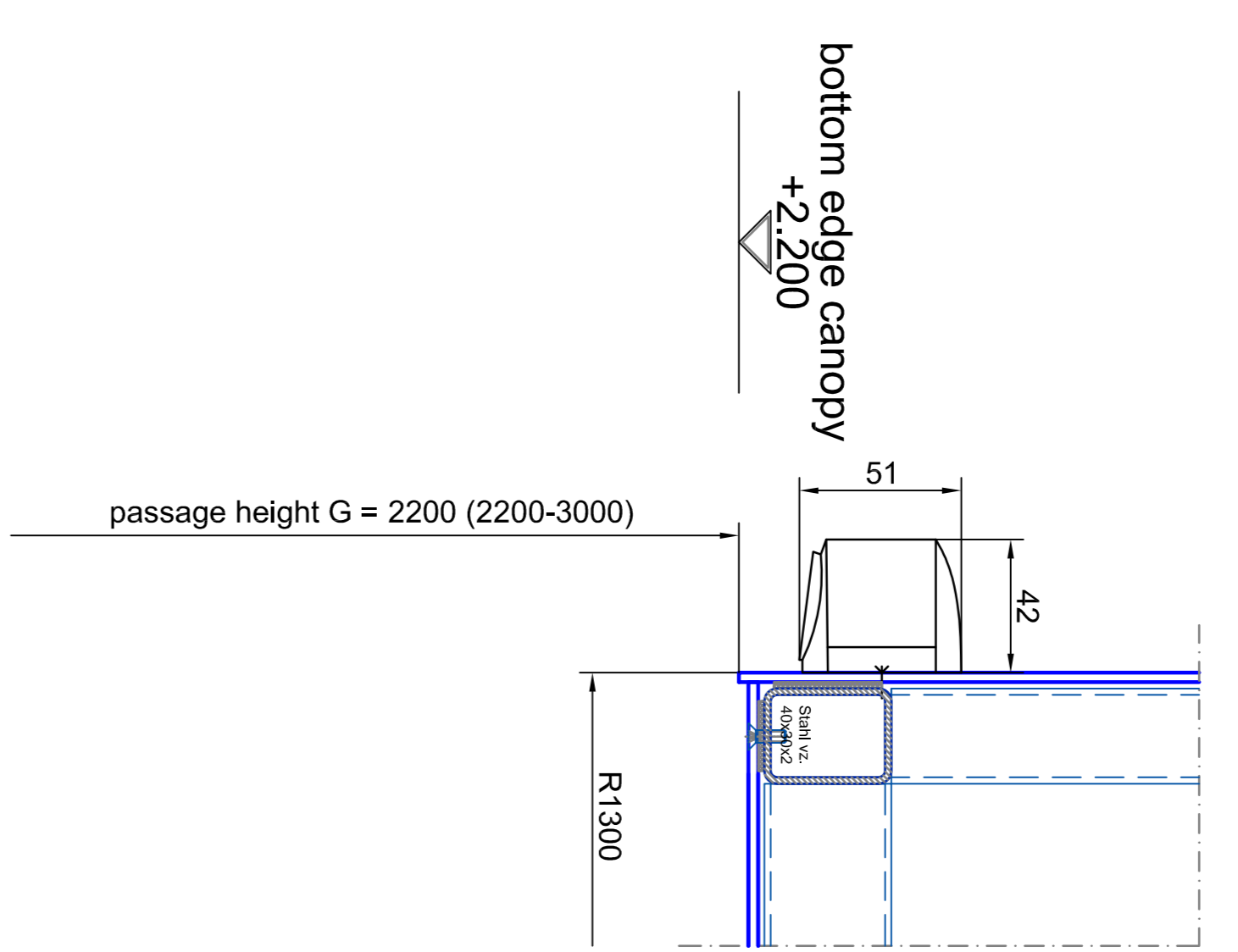
vertical section

total diameter $\varnothing = \varnothing 2600$ (1800-400)
 (only from $\varnothing 1500 - \varnothing 3000$ according to DIN 10550)



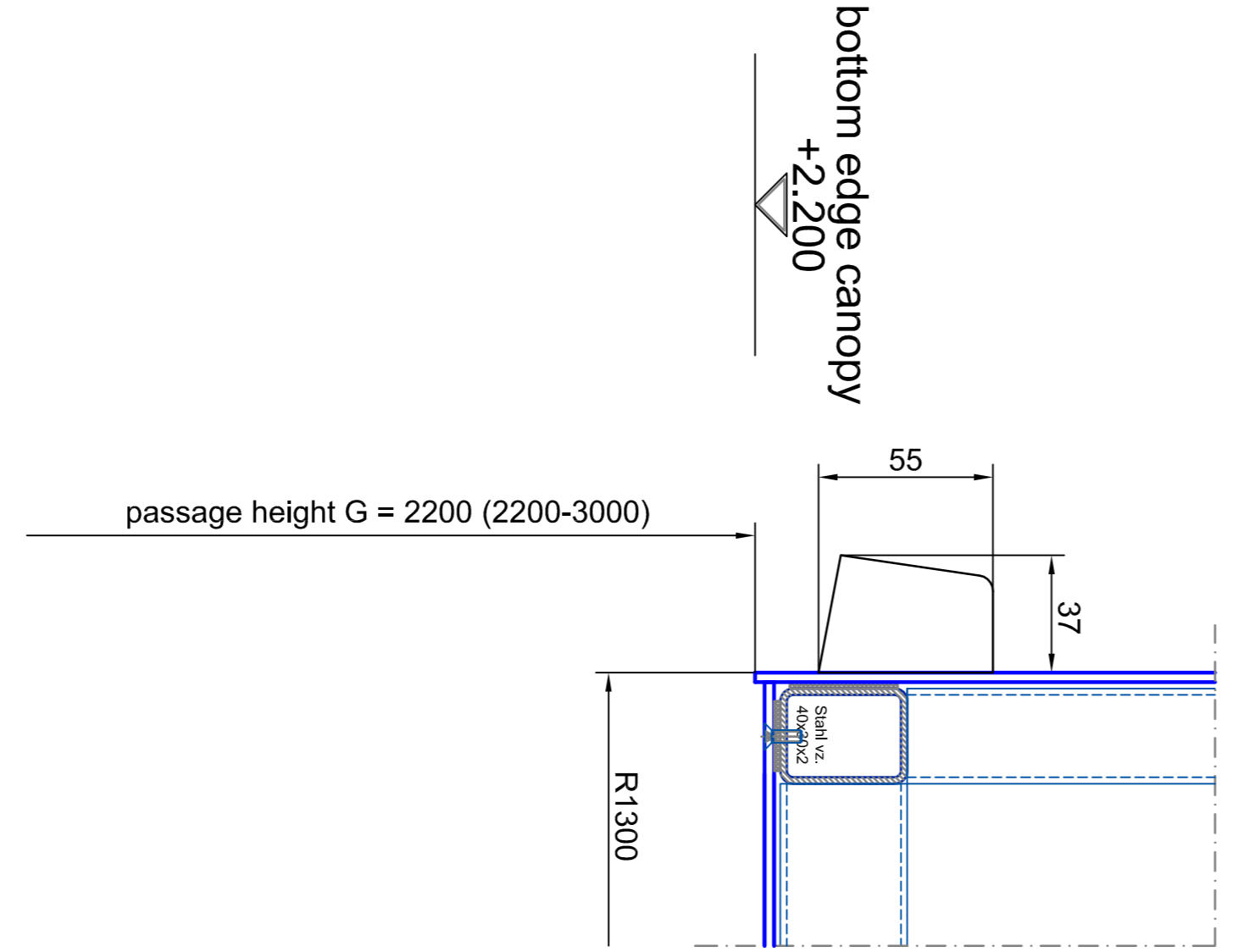
vertical section - passage area

A0 - M 1:2



vertical section - passage area

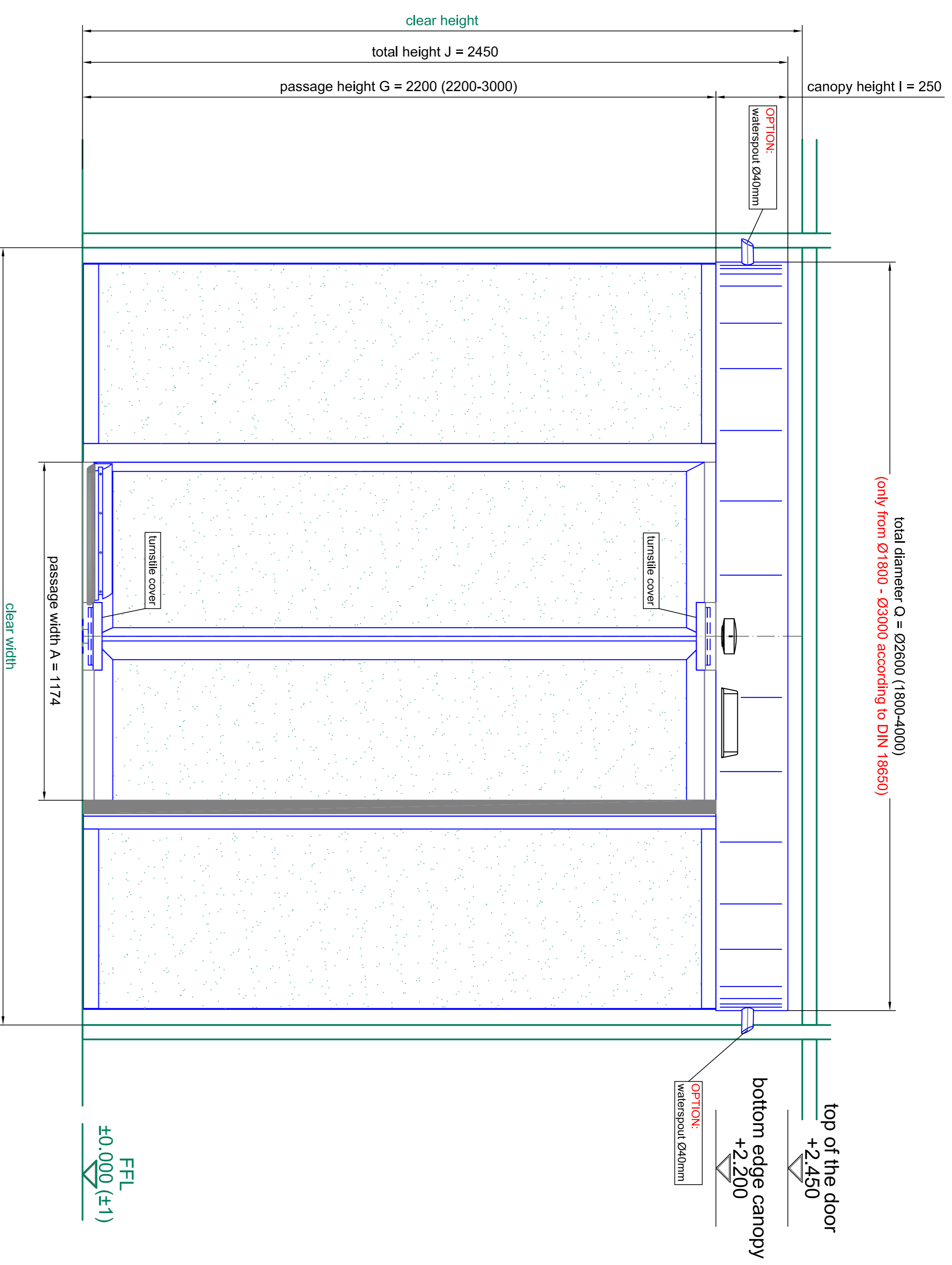
A0 - M 1:2



FEL
 ± 0.000 (± 1)

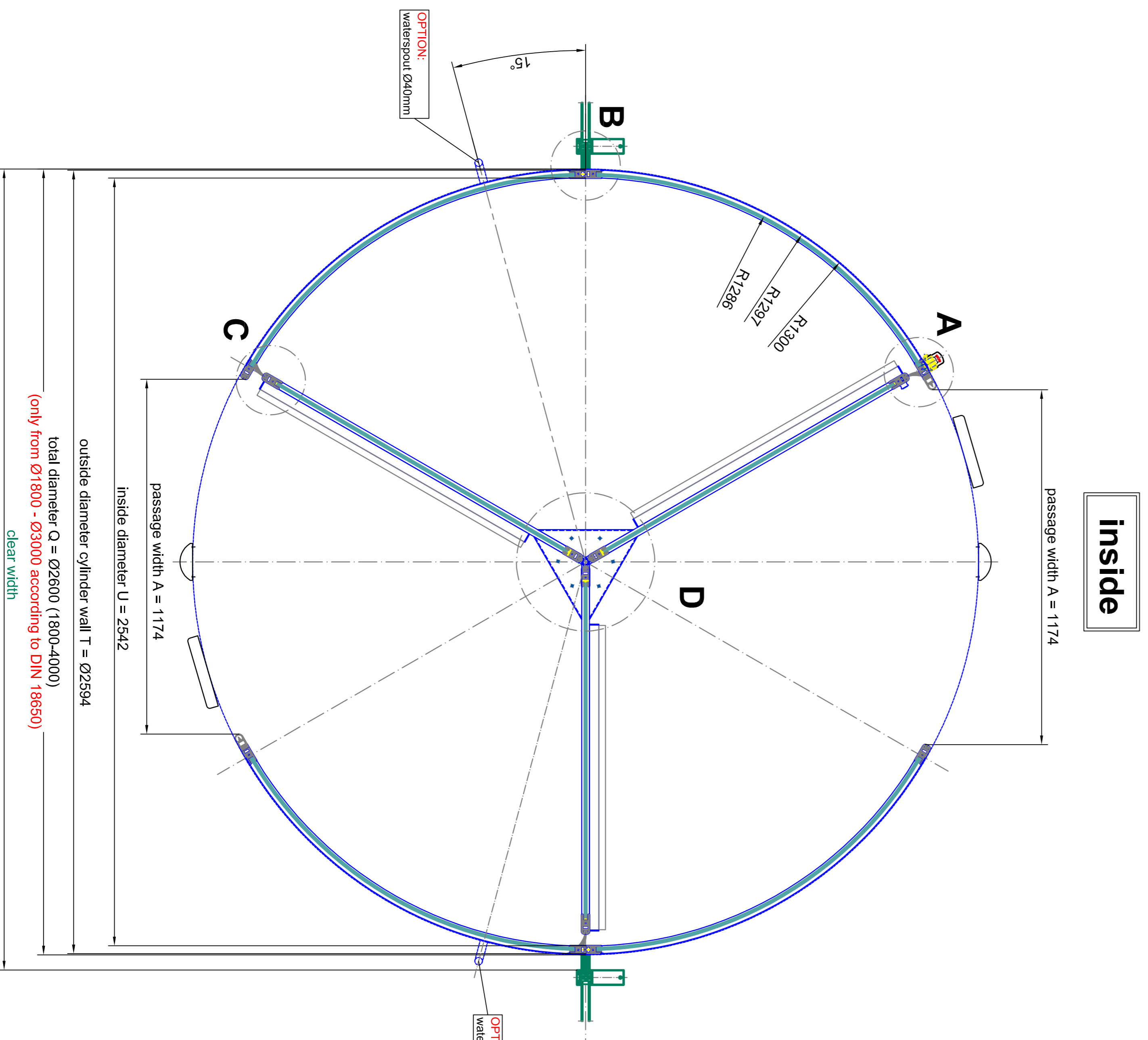
-0.065 (± 1)
 SSL

BLASI B L A S I G m B H Automatic Doors Cell Steel Sheet 5.15 0 - 7 / 7 2 - 500000		Tel. +49 822 / 883 - 291 Fax. +49 822 / 883 - 299 E-mail: info@blasi.de WWW: blasi.de	
Scale: A0 = M 1:5 Title: K31-V-26 Content: SAMPLE DRAWING ONLY		Scale: A0 = M 1:5 Title: K31-V-26 Content: SAMPLE DRAWING ONLY	
Sheet: 01 Total: 02		Sheet: 01 Total: 02	

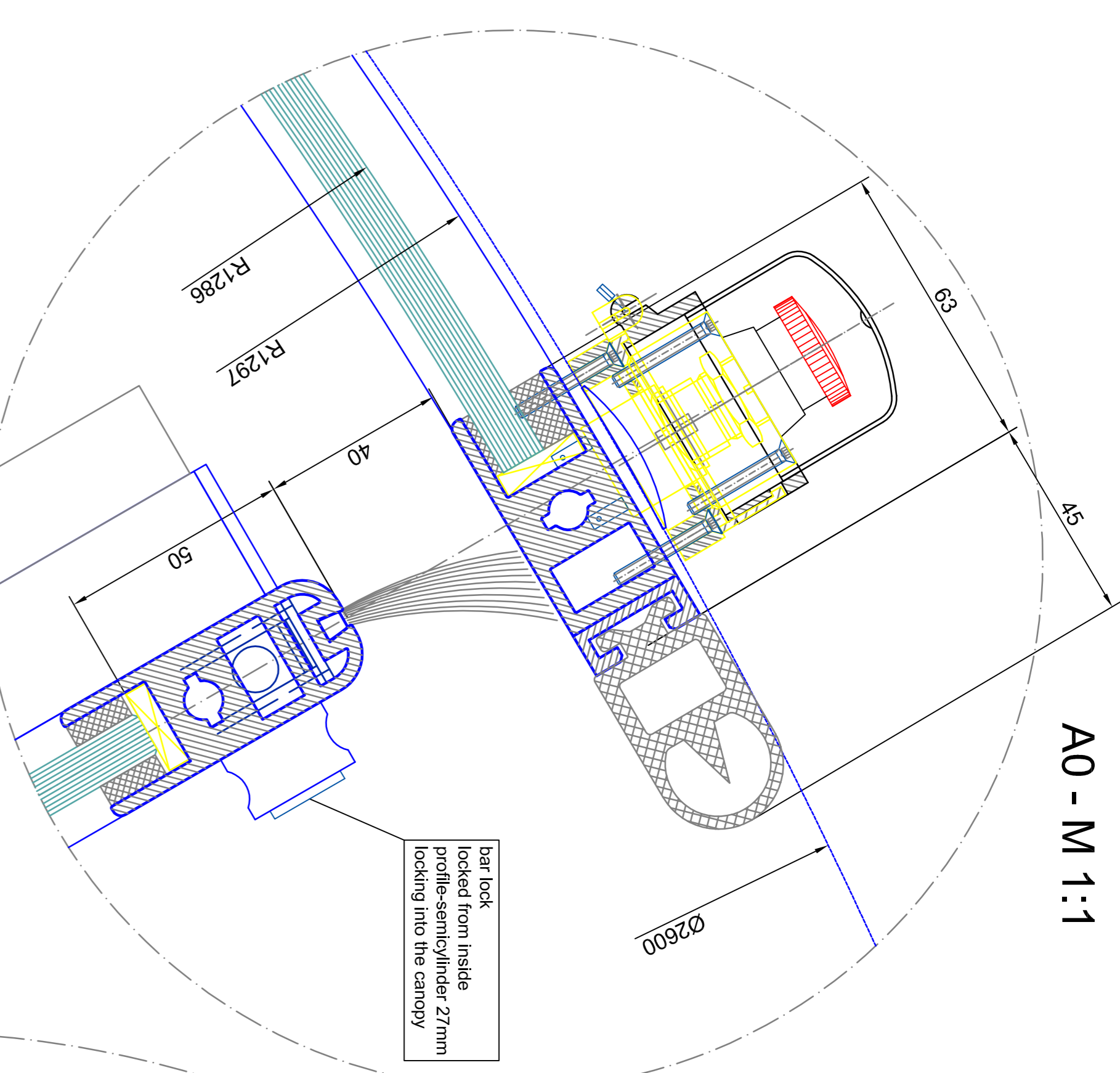


total diameter O = Ø2600 (1800-4000)
 (only from Ø1800 - Ø3000 according to DIN 18650)

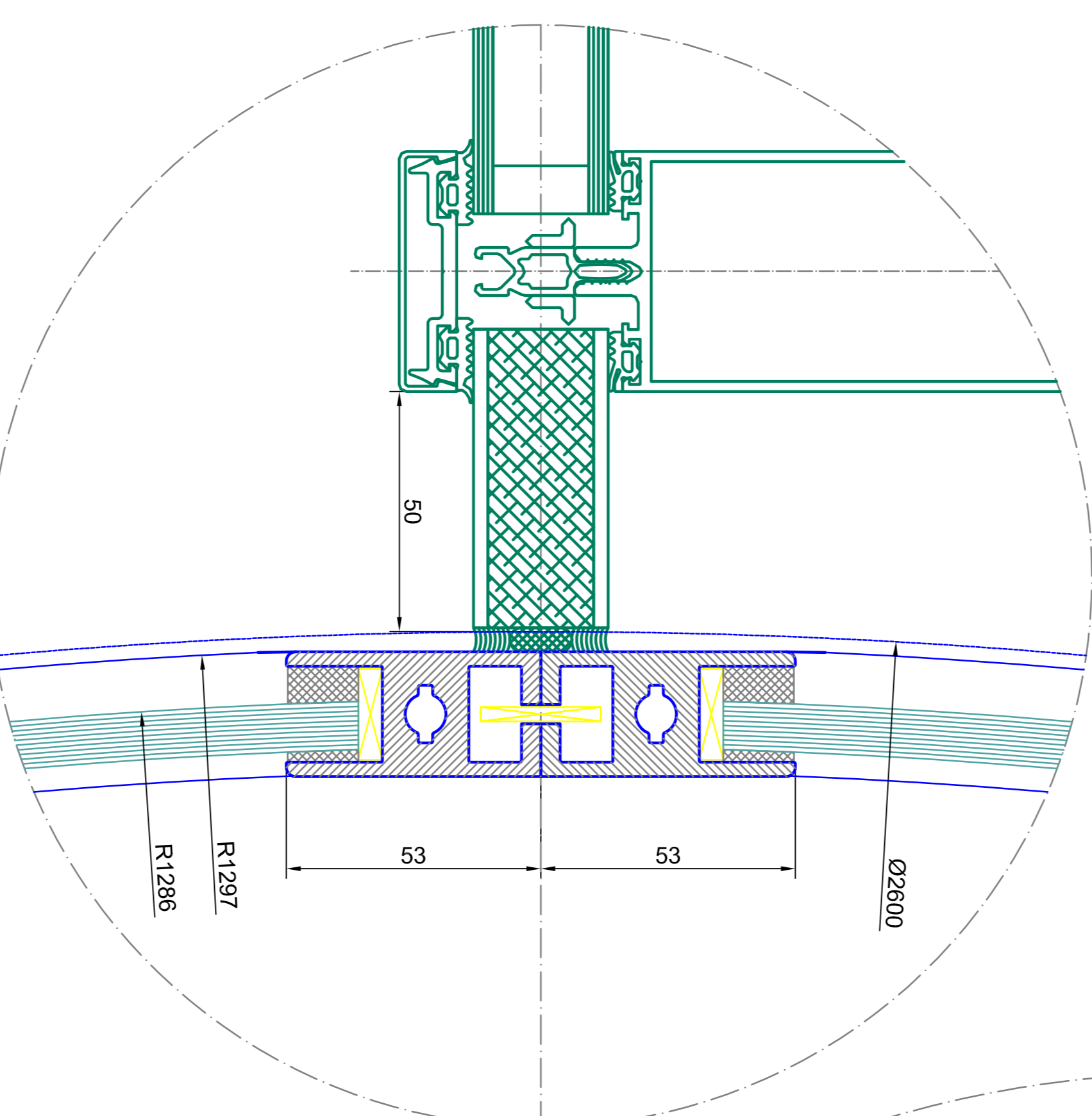
front elevation - outside



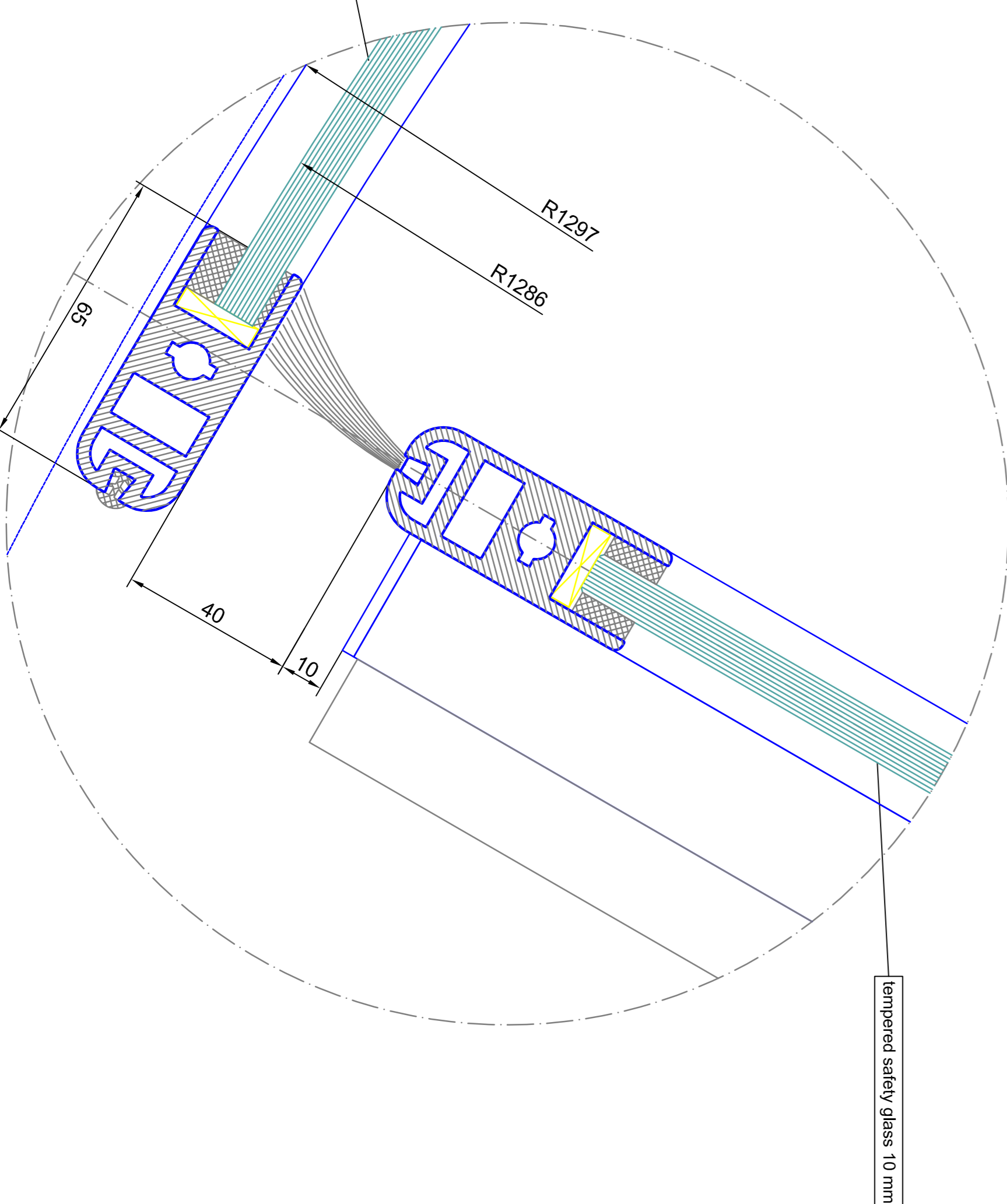
outside plan view



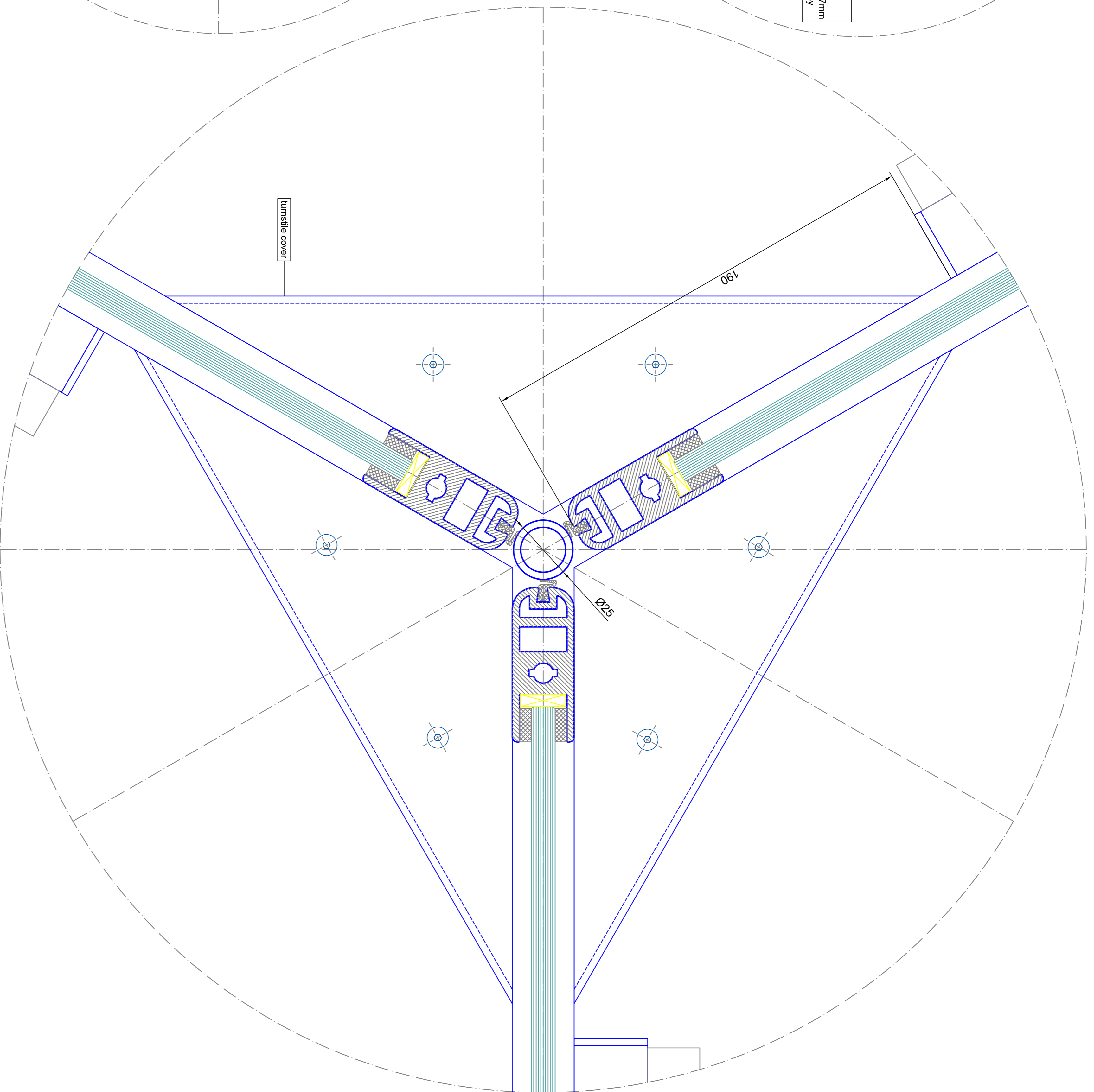
detail A
A0 - M 1:1



detail B
A0 - M 1:1



detail C
A0 - M 1:1



detail D
A0 - M 1:1

Scale:	A0 - M 1:1	Project:	K31-V-26
Author:	SA	Client:	SA
Check:	SA	Contract No.:	SA
Issue:	SA	Revision:	SA
Material:	SA	Material:	SA
Temporarily:	SA	Temporarily:	SA
Deleted:	SA	Deleted:	SA
Page:	02	Page:	02
Sheet:	02	Sheet:	02

Scale:	A0 - M 1:1	Project:	K31-V-26
Author:	SA	Client:	SA
Check:	SA	Contract No.:	SA
Issue:	SA	Revision:	SA
Material:	SA	Material:	SA
Temporarily:	SA	Temporarily:	SA
Deleted:	SA	Deleted:	SA
Page:	02	Page:	02
Sheet:	02	Sheet:	02

Scale:	A0 - M 1:1	Project:	K31-V-26
Author:	SA	Client:	SA
Check:	SA	Contract No.:	SA
Issue:	SA	Revision:	SA
Material:	SA	Material:	SA
Temporarily:	SA	Temporarily:	SA
Deleted:	SA	Deleted:	SA
Page:	02	Page:	02
Sheet:	02	Sheet:	02

BLASI
 B.L.A.S.I. G. m.b.H.
 Automatic Doors
 Cell Steel Street 5, 15
 D-71712 Albstadt
 Tel. +49(0)7142 / 883 - 291
 Fax. +49(0)7142 / 883 - 299
 E-mail: info@blasi.de
 WWW: blasi.de

SAMPLE DRAWING ONLY
 Scale: A0 - M 1:1
 Project: K31-V-26
 Author: SA
 Client: SA
 Check: SA
 Issue: SA
 Material: SA
 Temporarily: SA
 Deleted: SA
 Page: 02
 Sheet: 02