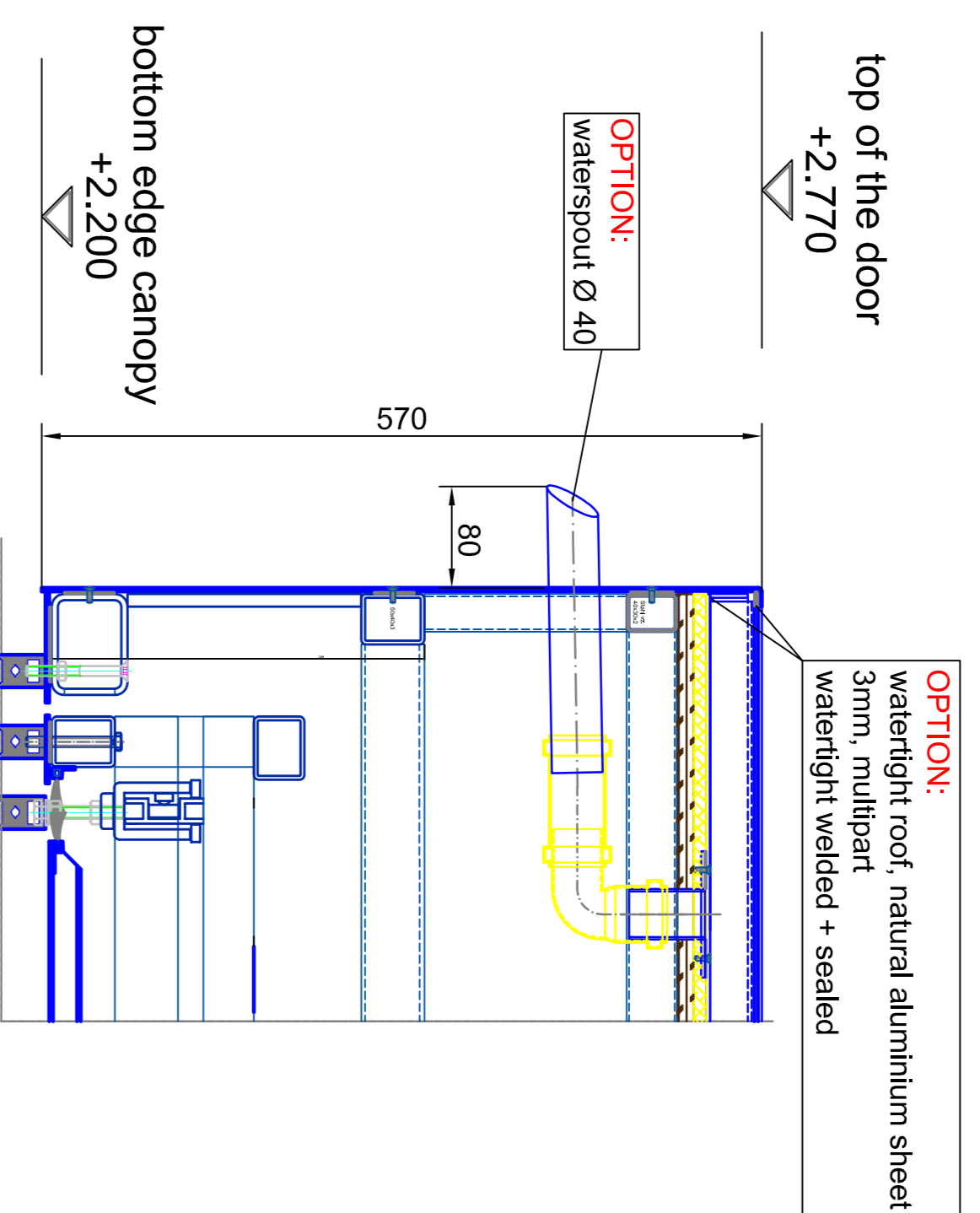


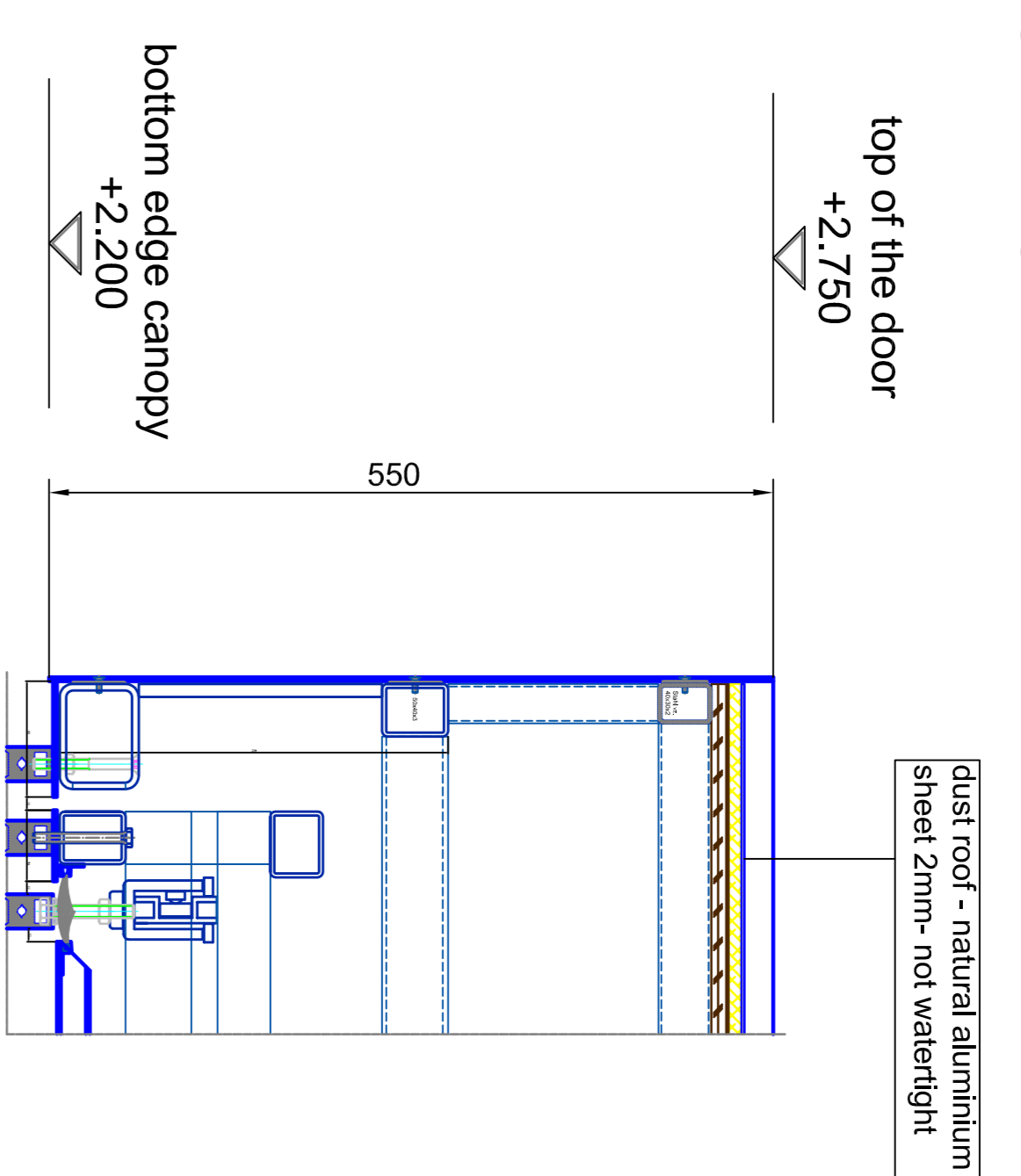
vertical section - watertight roof / waterspout

A0 - M 1:5



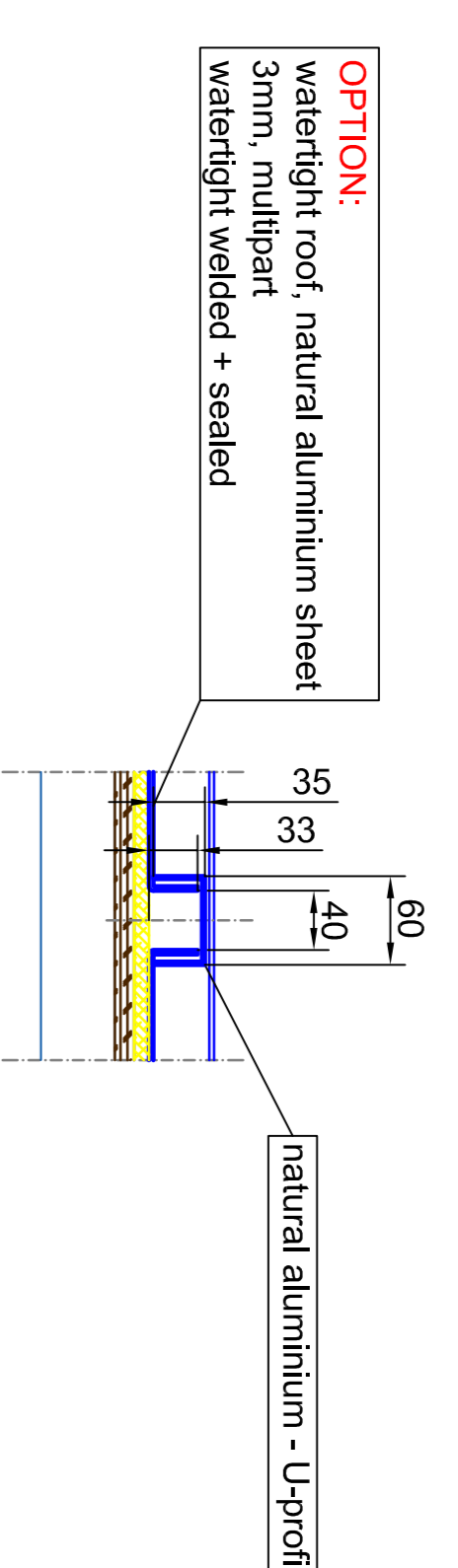
vertical section - dust roof / outside

A0 - M 1:5



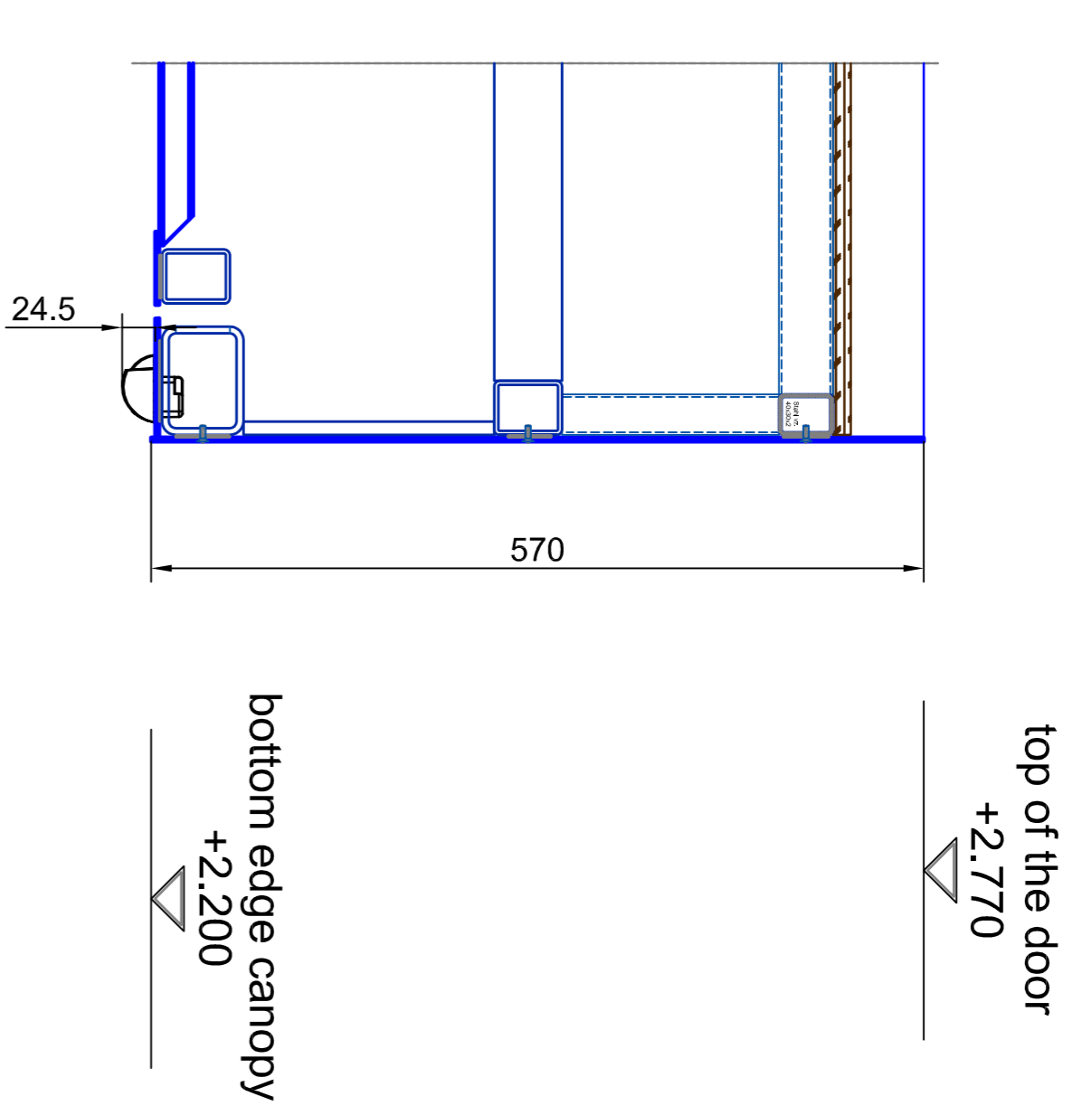
vertical section - watertight roof - multipart

A0 - M 1:5

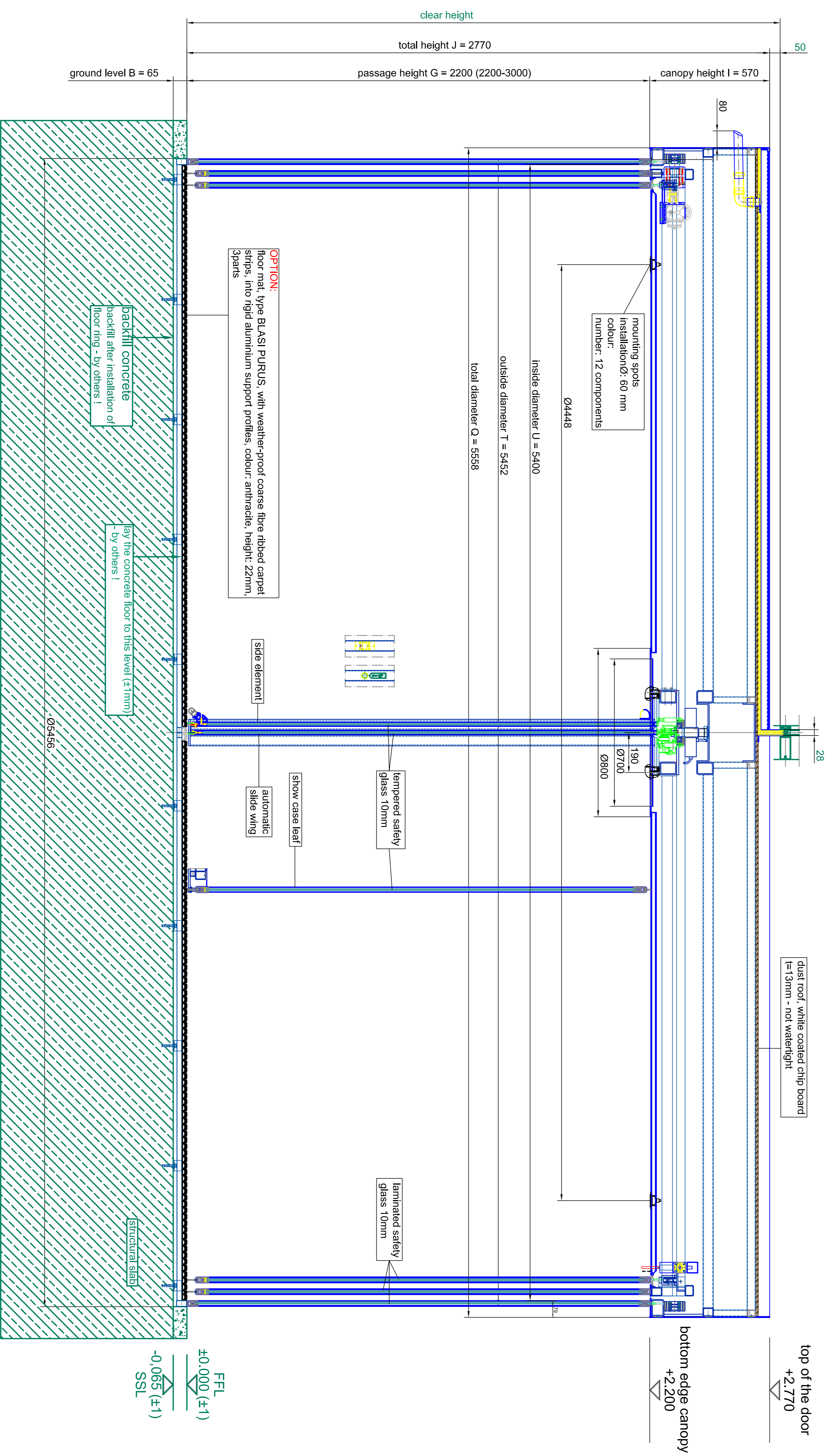


vertical section - passage area / inside

A0 - M 1:5



vertical section



Code	Description	Quantity	Unit
1	tempered safety glass 10 mm	1	m ²
2	laminated safety glass 10 mm	1	m ²

Code	Description	Quantity	Unit
3	OPTION: floor mat, Type BLASI PURUS, with weather-proof coarse fibre ribbed carpet strips, into rigid aluminum support profiles, colour: anthracite, height: 22mm.	1	m ²

Code	Description	Quantity	Unit
4	OPTION: watertight roof, natural aluminum sheet 3mm, multipart watertight welded + sealed	1	m ²

Code	Description	Quantity	Unit
5	OPTION: dust roof - natural aluminum sheet 2mm - not watertight	1	m ²

Code	Description	Quantity	Unit
6	OPTION: multipart watertight roof, natural aluminum sheet 3mm, multipart watertight welded + sealed	1	m ²

Code	Description	Quantity	Unit
7	OPTION: floor mat, Type BLASI PURUS, with weather-proof coarse fibre ribbed carpet strips, into rigid aluminum support profiles, colour: anthracite, height: 22mm.	1	m ²

Code	Description	Quantity	Unit
8	OPTION: dust roof, white coated chip board l=3mm - not watertight	1	m ²

Code	Description	Quantity	Unit
9	OPTION: natural aluminum - U-profil	1	m

Code	Description	Quantity	Unit
10	OPTION: laminated safety glass 10mm	1	m ²

Code	Description	Quantity	Unit
11	OPTION: snow catch lead	1	m

Code	Description	Quantity	Unit
12	OPTION: automatic slide wing	1	m

Code	Description	Quantity	Unit
13	OPTION: slide element	1	m

Code	Description	Quantity	Unit
14	OPTION: structural beam	1	m

Code	Description	Quantity	Unit
15	OPTION: rounding spots: height: 60 mm, colour: number: 12 components	12	components

Code	Description	Quantity	Unit
16	OPTION: backfill concrete: backfill after installation of floor mat by others I	1	m ³

Code	Description	Quantity	Unit
17	OPTION: for the concrete floor to this level (±1mm) by others I	1	m ²

Code	Description	Quantity	Unit
18	OPTION: dust roof, white coated chip board l=3mm - not watertight	1	m ²

Code	Description	Quantity	Unit
19	OPTION: natural aluminum - U-profil	1	m

Code	Description	Quantity	Unit
20	OPTION: laminated safety glass 10mm	1	m ²

Code	Description	Quantity	Unit
21	OPTION: snow catch lead	1	m

Code	Description	Quantity	Unit
22	OPTION: automatic slide wing	1	m

Code	Description	Quantity	Unit
23	OPTION: slide element	1	m

Code	Description	Quantity	Unit
24	OPTION: structural beam	1	m

Code	Description	Quantity	Unit
25	OPTION: rounding spots: height: 60 mm, colour: number: 12 components	12	components

Code	Description	Quantity	Unit
26	OPTION: backfill concrete: backfill after installation of floor mat by others I	1	m ³

Code	Description	Quantity	Unit
27	OPTION: for the concrete floor to this level (±1mm) by others I	1	m ²

Code	Description	Quantity	Unit
28	OPTION: dust roof, white coated chip board l=3mm - not watertight	1	m ²

Code	Description	Quantity	Unit
29	OPTION: natural aluminum - U-profil	1	m

Code	Description	Quantity	Unit
30	OPTION: laminated safety glass 10mm	1	m ²

Code	Description	Quantity	Unit
31	OPTION: snow catch lead	1	m

Code	Description	Quantity	Unit
32	OPTION: automatic slide wing	1	m

Code	Description	Quantity	Unit
33	OPTION: slide element	1	m

Code	Description	Quantity	Unit
34	OPTION: structural beam	1	m

Code	Description	Quantity	Unit
35	OPTION: rounding spots: height: 60 mm, colour: number: 12 components	12	components

Code	Description	Quantity	Unit
36	OPTION: backfill concrete: backfill after installation of floor mat by others I	1	m ³

Code	Description	Quantity	Unit
37	OPTION: for the concrete floor to this level (±1mm) by others I	1	m ²

Code	Description	Quantity	Unit
38	OPTION: dust roof, white coated chip board l=3mm - not watertight	1	m ²

Code	Description	Quantity	Unit
39	OPTION: natural aluminum - U-profil	1	m

Code	Description	Quantity	Unit
40	OPTION: laminated safety glass 10mm	1	m ²

Code	Description	Quantity	Unit
41	OPTION: snow catch lead	1	m

Code	Description	Quantity	Unit
42	OPTION: automatic slide wing	1	m

Code	Description	Quantity	Unit
43	OPTION: slide element	1	m

Code	Description	Quantity	Unit
44	OPTION: structural beam	1	m

Code	Description	Quantity	Unit
45	OPTION: rounding spots: height: 60 mm, colour: number: 12 components	12	components

Code	Description	Quantity	Unit
46	OPTION: backfill concrete: backfill after installation of floor mat by others I	1	m ³

Code	Description	Quantity	Unit
47	OPTION: for the concrete floor to this level (±1mm) by others I	1	m ²

Code	Description	Quantity	Unit
48	OPTION: dust roof, white coated chip board l=3mm - not watertight	1	m ²

Code	Description	Quantity	Unit
49	OPTION: natural aluminum - U-profil	1	m

Code	Description	Quantity	Unit
50	OPTION: laminated safety glass 10mm	1	m ²

Code	Description	Quantity	Unit
51	OPTION: snow catch lead	1	m

Code	Description	Quantity	Unit
52	OPTION: automatic slide wing	1	m

Code	Description	Quantity	Unit
53	OPTION: slide element	1	m

Code	Description	Quantity	Unit
54	OPTION: structural beam	1	m

Code	Description	Quantity	Unit
55	OPTION: rounding spots: height: 60 mm, colour: number: 12 components	12	components

Code	Description	Quantity	Unit
56	OPTION: backfill concrete: backfill after installation of floor mat by others I	1	m ³

Code	Description	Quantity	Unit
57	OPTION: for the concrete floor to this level (±1mm) by others I	1	m ²

Code	Description	Quantity	Unit
58	OPTION: dust roof, white coated chip board l=3mm - not watertight	1	m ²

Code	Description	Quantity	Unit
59	OPTION: natural aluminum - U-profil	1	m

Code	Description	Quantity	Unit
60	OPTION: laminated safety glass 10mm	1	m ²

Code	Description	Quantity	Unit
61	OPTION: snow catch lead	1	m

Code	Description	Quantity	Unit
62	OPTION: automatic slide wing	1	m

Code	Description	Quantity	Unit
63	OPTION: slide element	1	m

Code	Description	Quantity	Unit
64	OPTION: structural beam	1	m

Code	Description	Quantity	Unit
65	OPTION: rounding spots: height: 60 mm, colour: number: 12 components	12	components

Code	Description	Quantity	Unit
66	OPTION: backfill concrete: backfill after installation of floor mat by others I	1	m ³

Code	Description	Quantity	Unit
67	OPTION: for the concrete floor to this level (±1mm) by others I	1	m ²

Code	Description	Quantity	Unit
68	OPTION: dust roof, white coated chip board l=3mm - not watertight	1	m ²

Code	Description	Quantity	Unit
69	OPTION: natural aluminum - U-profil	1	m

Code	Description	Quantity	Unit
70	OPTION: laminated safety glass 10mm	1	m ²

Code	Description	Quantity	Unit
71	OPTION: snow catch lead	1	m

Code	Description	Quantity	Unit
72	OPTION: automatic slide wing	1	m

Code	Description	Quantity	Unit
73	OPTION: slide element	1	m

Code	Description	Quantity	Unit
74	OPTION: structural beam	1	m

Code	Description	Quantity	Unit
75	OPTION: rounding spots: height: 60 mm, colour: number: 12 components	12	components

Code	Description	Quantity	Unit
76	OPTION: backfill concrete: backfill after installation of floor mat by others I	1	m ³

Code	Description	Quantity	Unit
77	OPTION: for the concrete floor to this level (±1mm) by others I	1	m ²

Code	Description	Quantity	Unit
78	OPTION: dust roof, white coated chip board l=3mm - not watertight	1	m ²

Code	Description	Quantity	Unit
79	OPTION: natural aluminum - U-profil	1	m

Code	Description	Quantity	Unit
80	OPTION: laminated safety glass 10mm	1	m ²

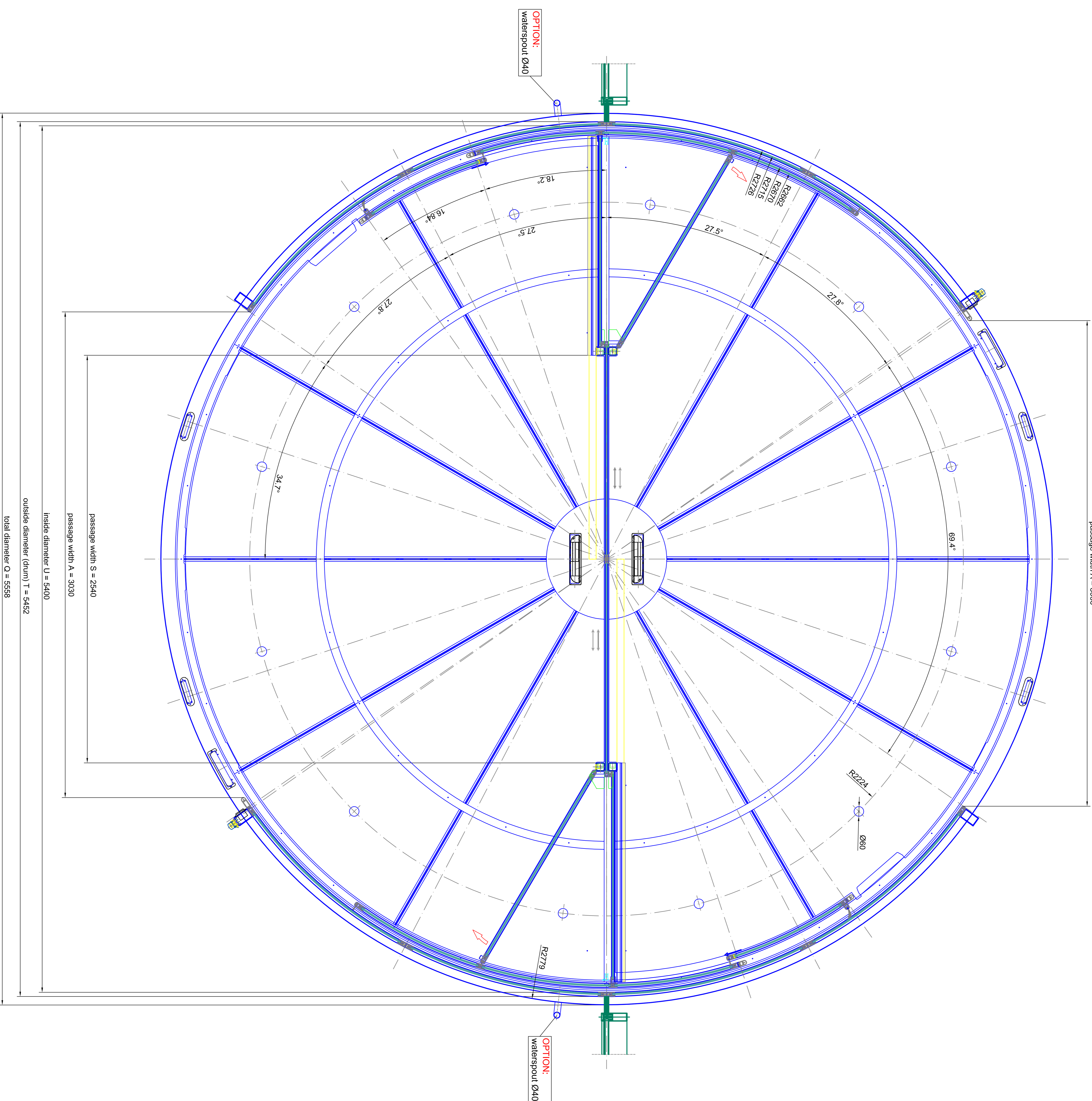
Code	Description	Quantity	Unit
81	OPTION: snow catch lead	1	m

Code	Description	Quantity	Unit
82	OPTION: automatic slide wing	1	m

Code	Description	Quantity	Unit
83			

inside

passage width A = 3030



passage width S = 2540
 passage width A = 3030
 inside diameter U = 5400
 outside diameter (drum) T = 5452
 total diameter Q = 5558

outside

horizontal section - door in open door position

Standard	EN 10383-2	EN 10383-2
Material	304 L8	EN 10383-1
Finish	brushed safety glass 10 mm	brushed safety glass 10 mm
Color		

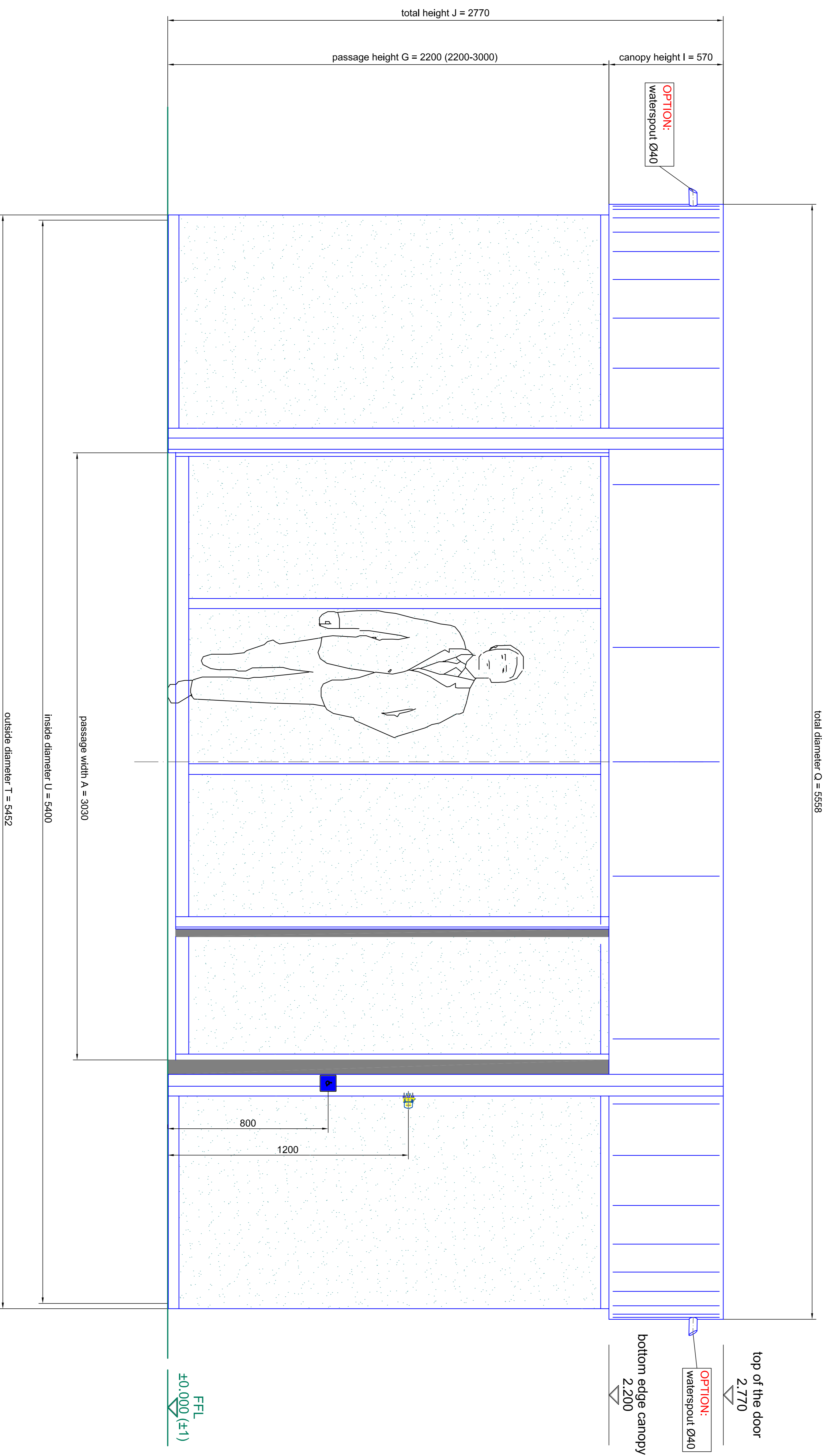
Scale	A0 = M 1:10
Type	K21AS/M1-54
Configuration No.	

BLASI
 B L A S I G m b H
 Automatic Doors
 Call center: +39 051 240000
 0 71 97 71 80000

Tel. +39 0523 / 863 . 291
 Fax. +39 0523 / 863 . 299
 E-mail: info@blasig.it
 WWW: blasig.it

SAMPLE DRAWING - ONLY

Page 03
 Rev 05



front elevation - outside

Material	Alu-Profile system	Alu-Profile system
Standard	304.48	(DIN 10521)
Finish	tempered safety glass 10 mm	tempered safety glass 10 mm
Accessories		

Scale	A0 = M 1:10	Configuration No.	
Project	K21AS-VI-54	Sheet	04
Client		Page	04
Contract	SAMPLE DRAWING ONLY	Rev.	05

BLASI
 Automatic Doors
 Tel. +390322 / 863.291
 Fax. +390322 / 863.299
 E-mail: info@blasio.it
 WWW: blasio.it

BLASI S.p.A. - Via S. Maria Maddalena, 10 - 38060 S. Maria Maddalena (TN) - Italy
 Tel. +390322 / 863.291 - Fax. +390322 / 863.299
 E-mail: info@blasio.it - WWW: blasio.it

