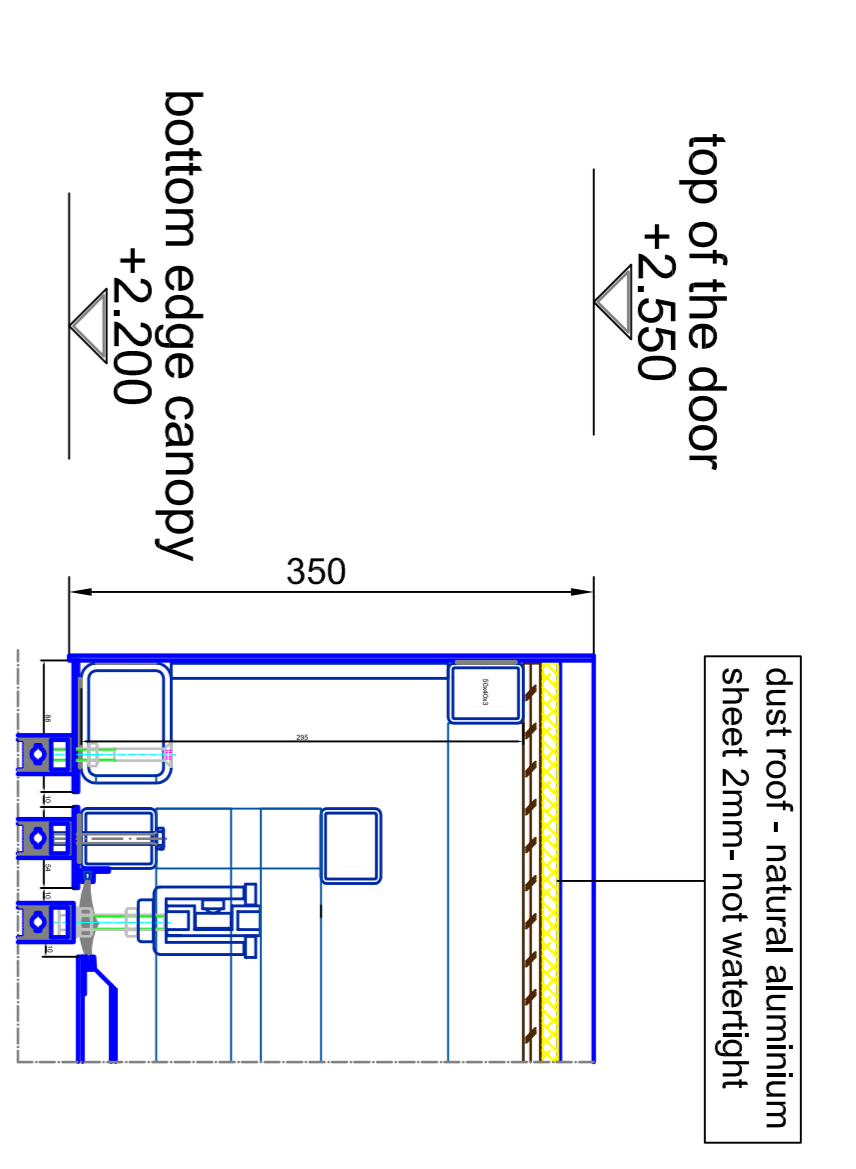
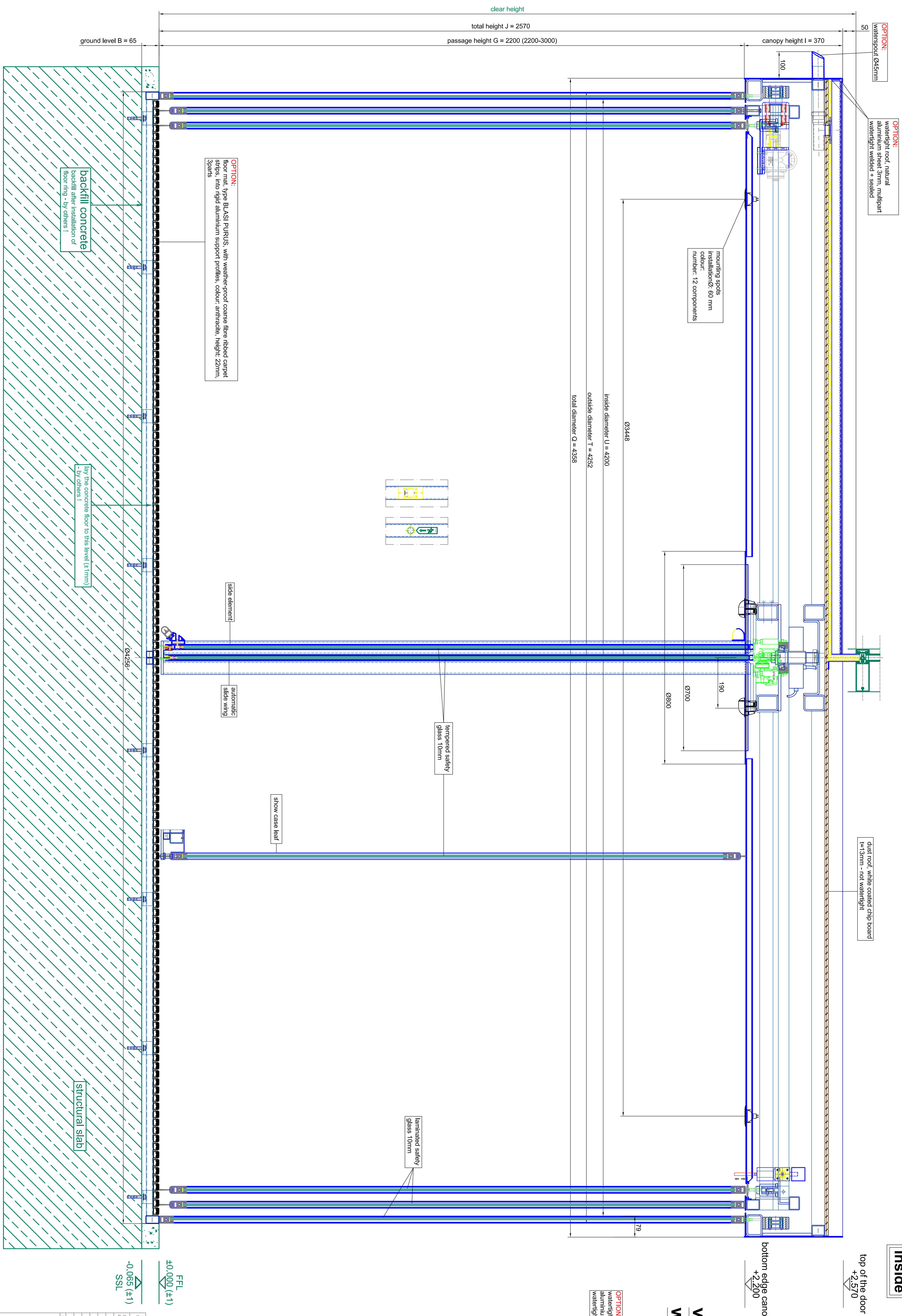


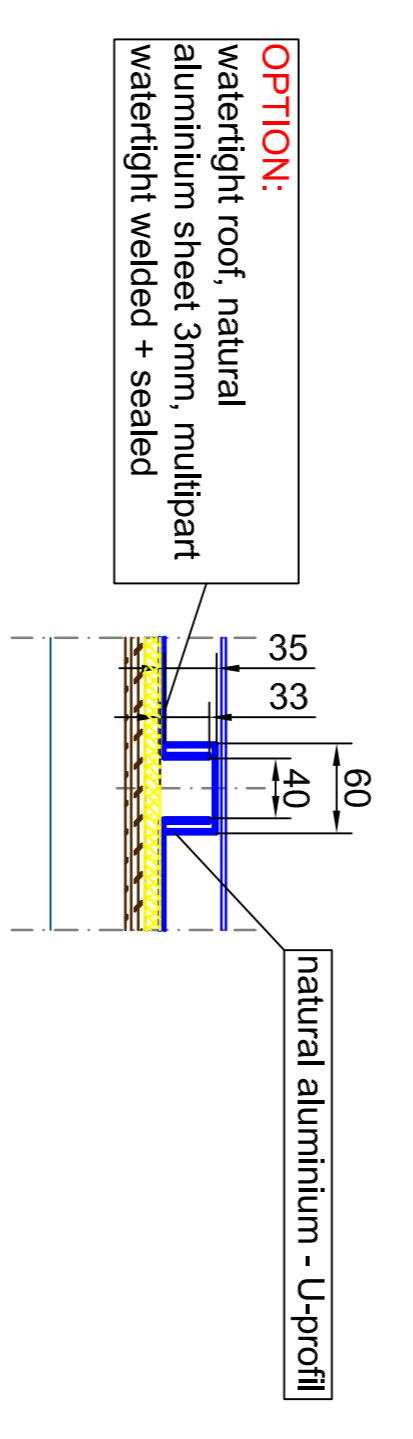
**vertical section -
dust roof / outside**



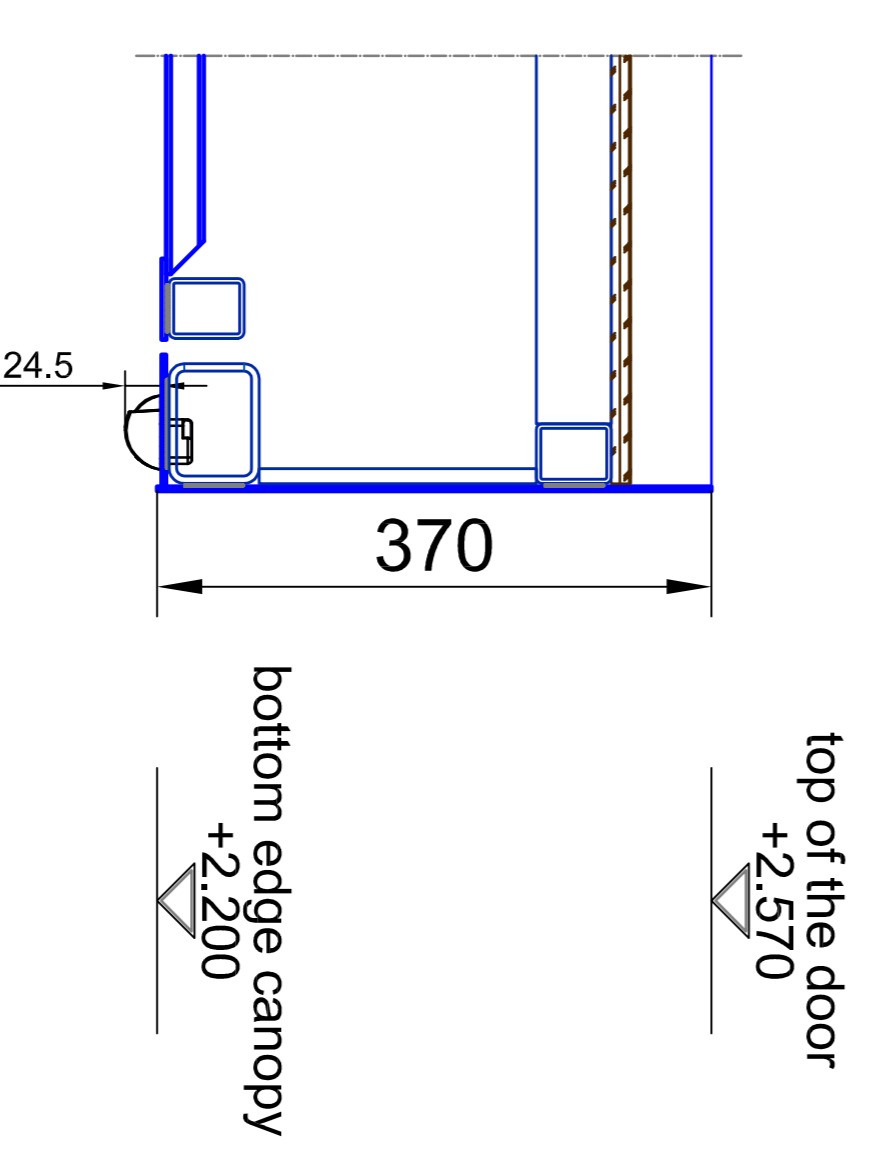
vertical section



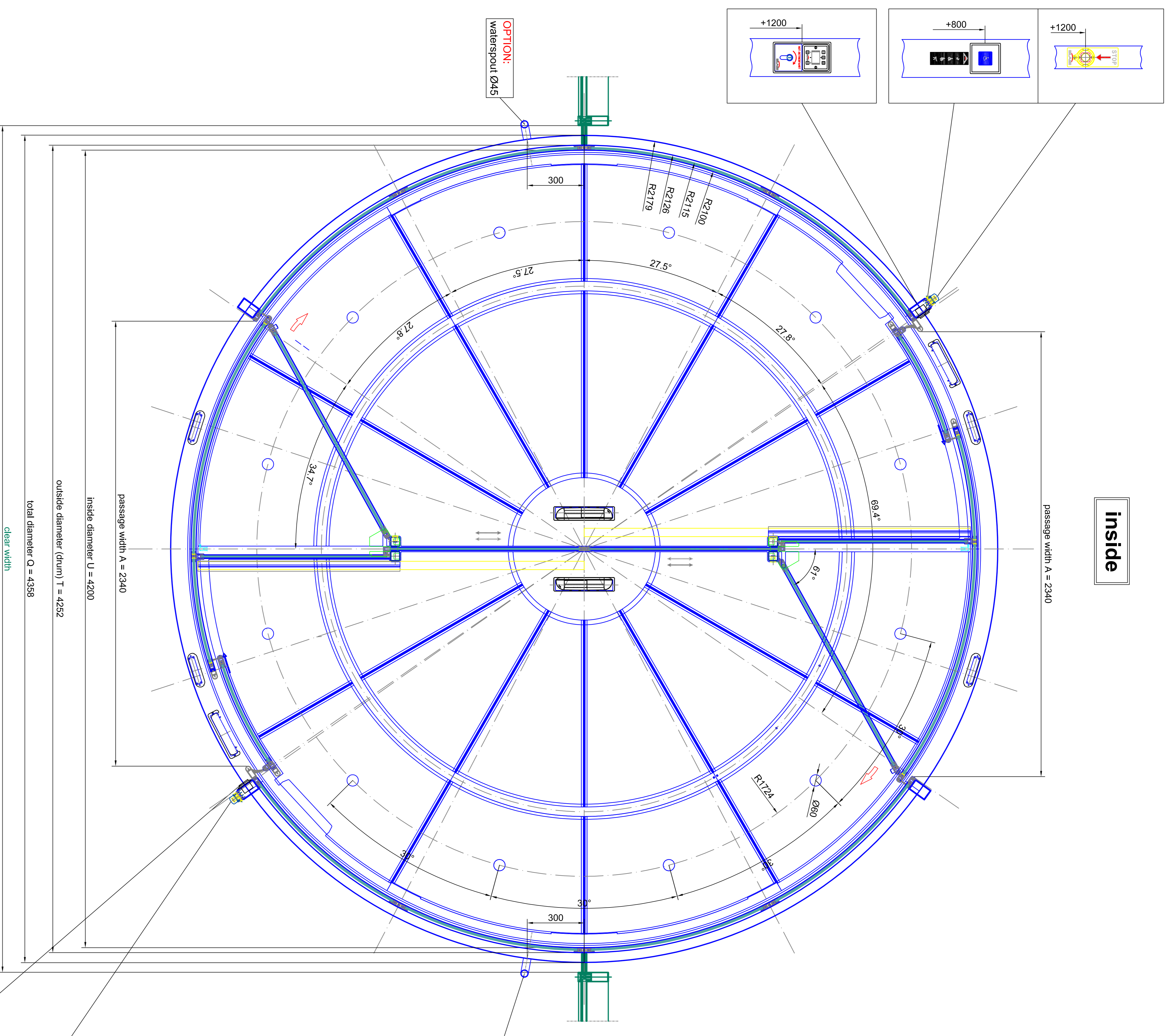
**vertical section -
watertight roof - multipart**



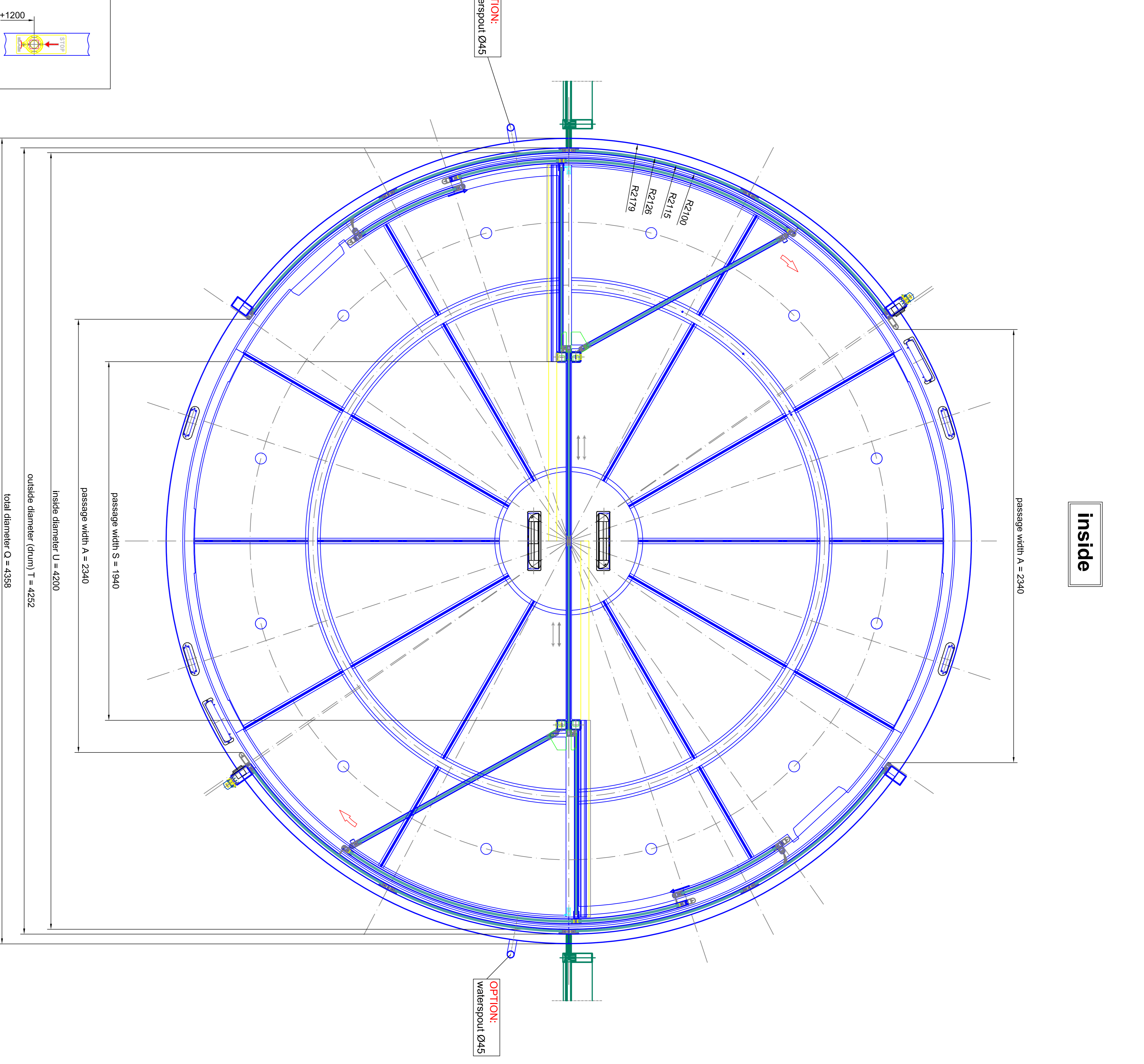
**vertical section -
passage area / inside**



<p>BLASI</p> <p>BLASI GmbH Automatic Door Carl-Str. 5-15 D-71712 Waiblingen</p> <p>Tel. +49(0)7142 881-281 Fax. +49(0)7142 881-289 E-Mail: info@blasi.de WWW: blasid.de</p>		<p>Scale: A0 = M 1:5</p> <p>Type: K21AS/M1-42</p> <p>Project: SAMPLE DRAWING ONLY</p>	
<p>Scale: A0 = M 1:5</p> <p>Revision: 01</p>		<p>Scale: A0 = M 1:5</p> <p>Revision: 01</p>	
<p>Sheet: 1</p> <p>Temp: 1</p> <p>Material: 1</p> <p>Color: 1</p> <p>Finish: 1</p> <p>Surface: 1</p> <p>Notes: 1</p>		<p>Sheet: 1</p> <p>Temp: 1</p> <p>Material: 1</p> <p>Color: 1</p> <p>Finish: 1</p> <p>Surface: 1</p> <p>Notes: 1</p>	



horizontal section - door in standard position



horizontal section - door in open door position

Scale:	A0 = M 1:10	Configuration No.:	0204
Project:	346.48	Client:	BLASI
Sheet:	temporal safety glass 10 mm	Contract:	K21AS/M-42
Material:	temporal safety glass 10 mm	Product:	SAMPLE DRAWING ONLY
Manufacturer:	BLASI	Version:	02
Address:	BLASI G m b H Automatic Doors Calle Sankt 5-15 0-11972 Waldberg www.blasi.it - 1190	Phone:	+49(0)222 / 863 - 291 +49(0)222 / 863 - 299
Website:	www.blasi.it	Fax:	+49(0)222 / 863 - 299
Country:	Germany	Year:	04

