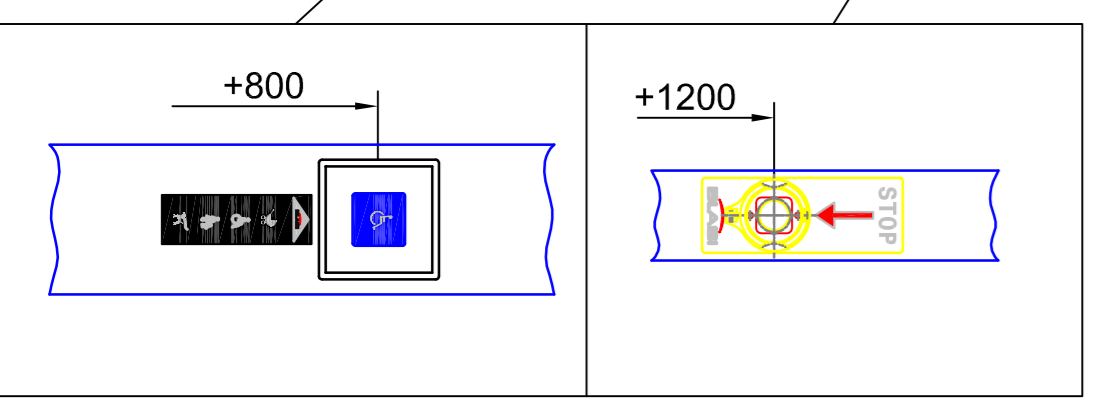


passage width A = 3030  
 inside diameter U = 5400  
 outside diameter (dunn) T = 5452  
 total diameter Q = 5558  
 clear width

inside  
 passage width A = 3030

outside

horizontal section - door in standard position

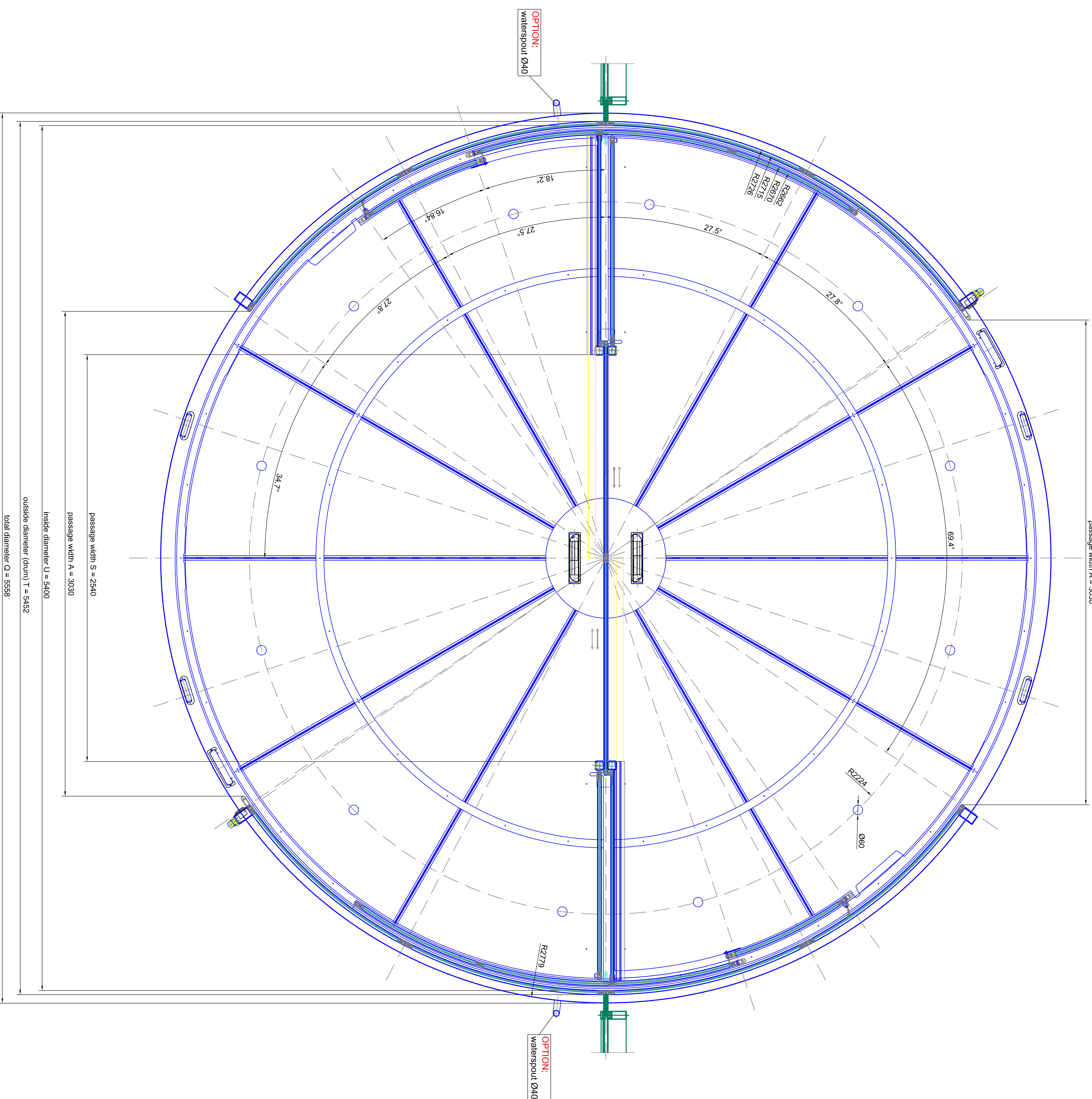


Scale:	A0 = M 1:10	Configuration No.:	526	526/3	
Project:	BLASI	Type:	K21-SF-54	Order No.:	
Client:	BLASI G m b H	Manufacturer:	SAMPLE DRAWING ONLY	Page:	02
Address:	Blasiweg 10, 48709 Bielefeld, Germany	Product:	Automatic Door	Rev:	05
Phone:	+49 (0)5222 883-291	Material:	tempered safety glass 10 mm		
Fax:	+49 (0)522 883-299	Accessories:	tempered safety glass 10 mm		
Website:	www.blasi.de	Notes:			



inside

passage width A = 3030



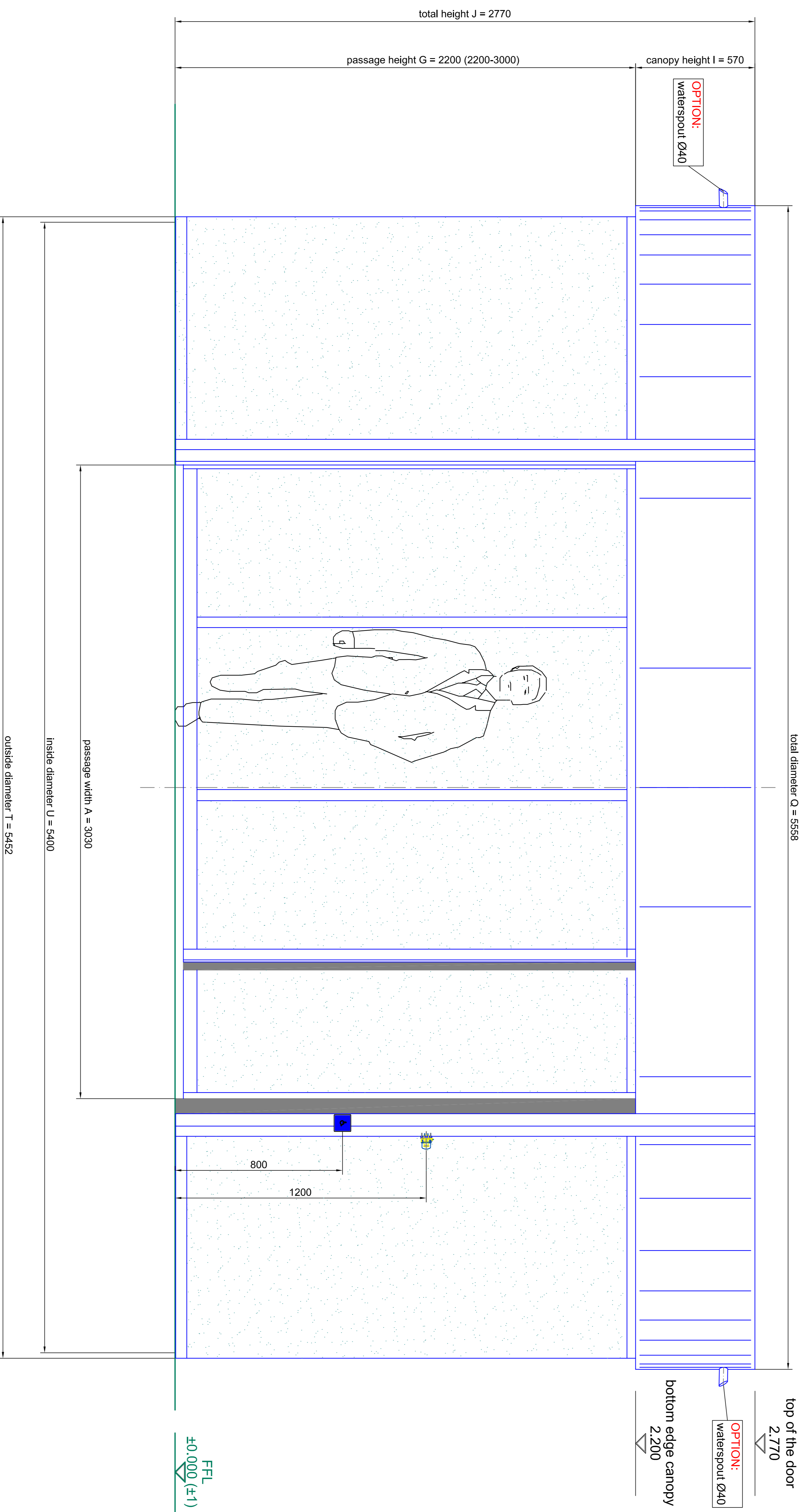
passage width S = 2540  
 passage width A = 3030  
 inside diameter U = 5400  
 outside diameter (drum) T = 5452  
 total diameter Q = 5558

outside

horizontal section - door in open door position

Scale:	A0 = M 1:10	Configuration No.:	250	250/3			
Project:	BLASI	Type:	K21-SF-54	Configuration No.:	250	250/3	
Client:	BLASI	Product:	SAMPLE DRAWING - ONLY	Page:	03	05	
Address:	BLASI S.p.A. - Via S. Maria Maddalena, 10 - 40138 Bologna, Italy	Phone:	+39 051 261111	Fax:	+39 051 261112	Web:	www.blasi.it
Company:	BLASI	Product:	SAMPLE DRAWING - ONLY	Page:	03	05	
Material:	tempered safety glass 10 mm	Material:	tempered safety glass 10 mm	Page:	03	05	





**front elevation - outside**

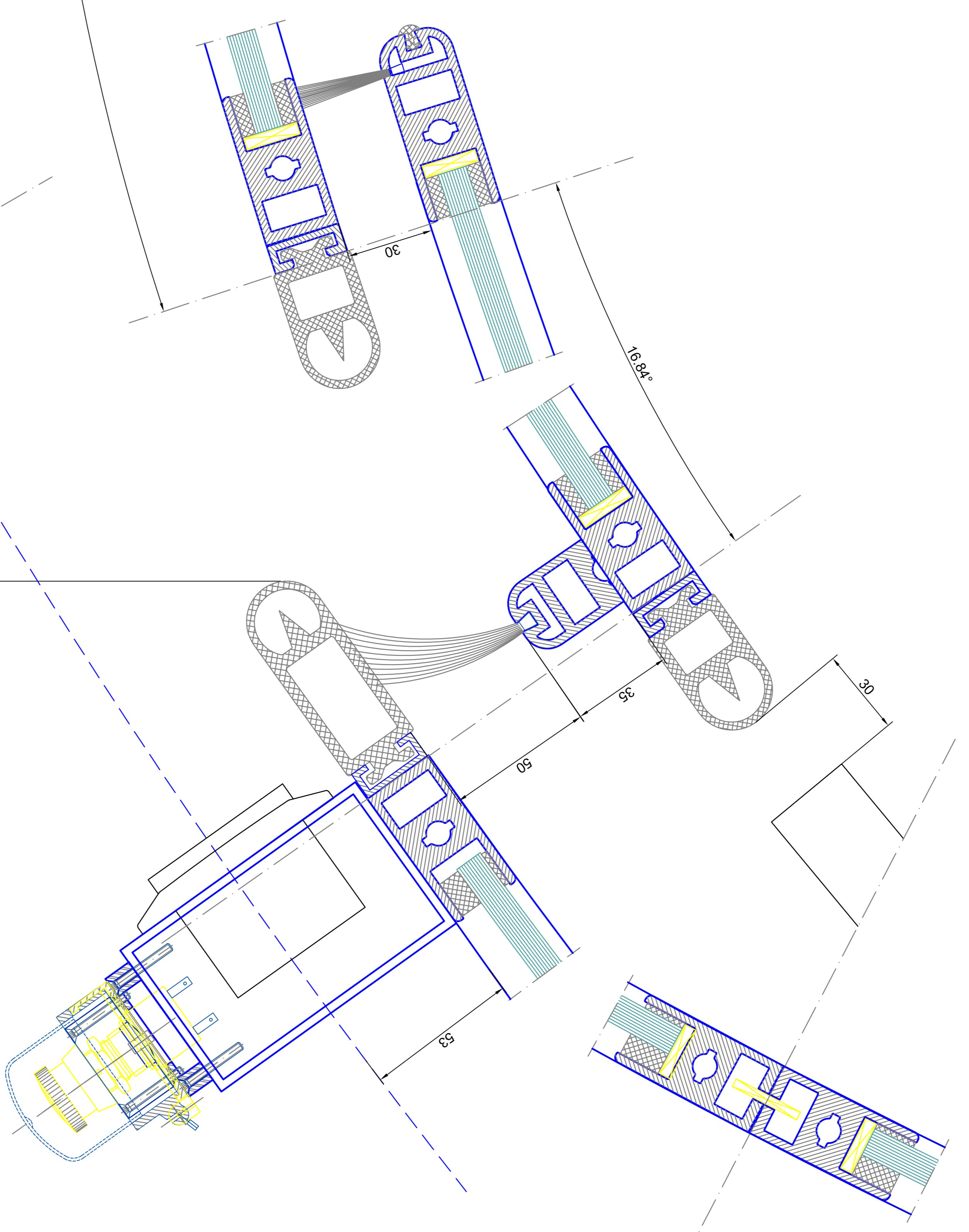
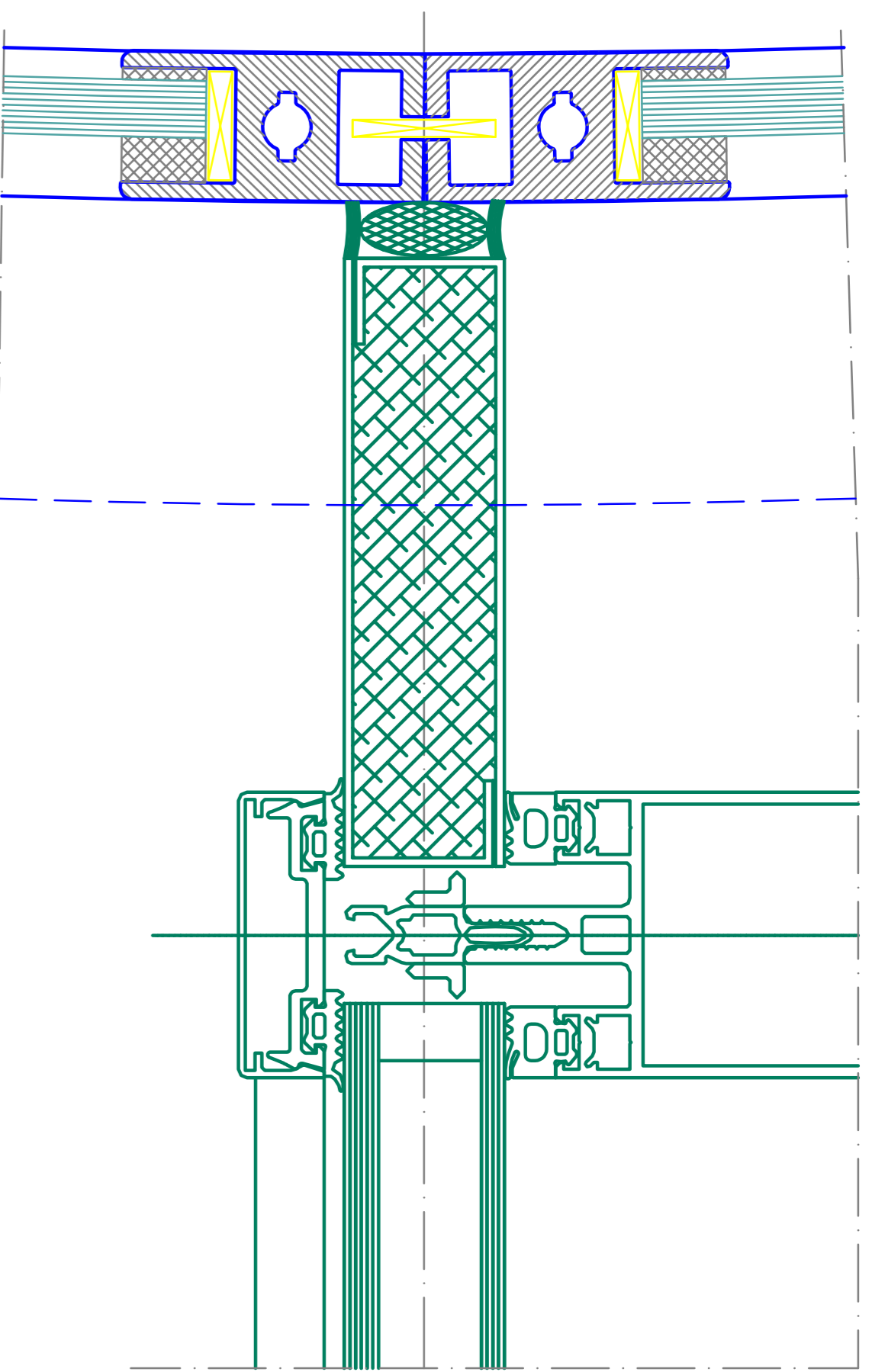
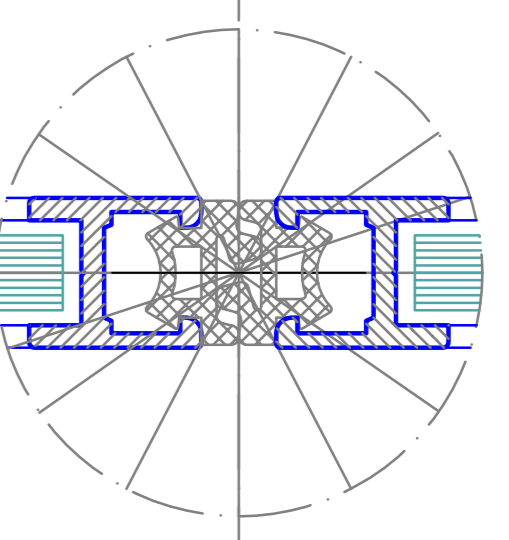
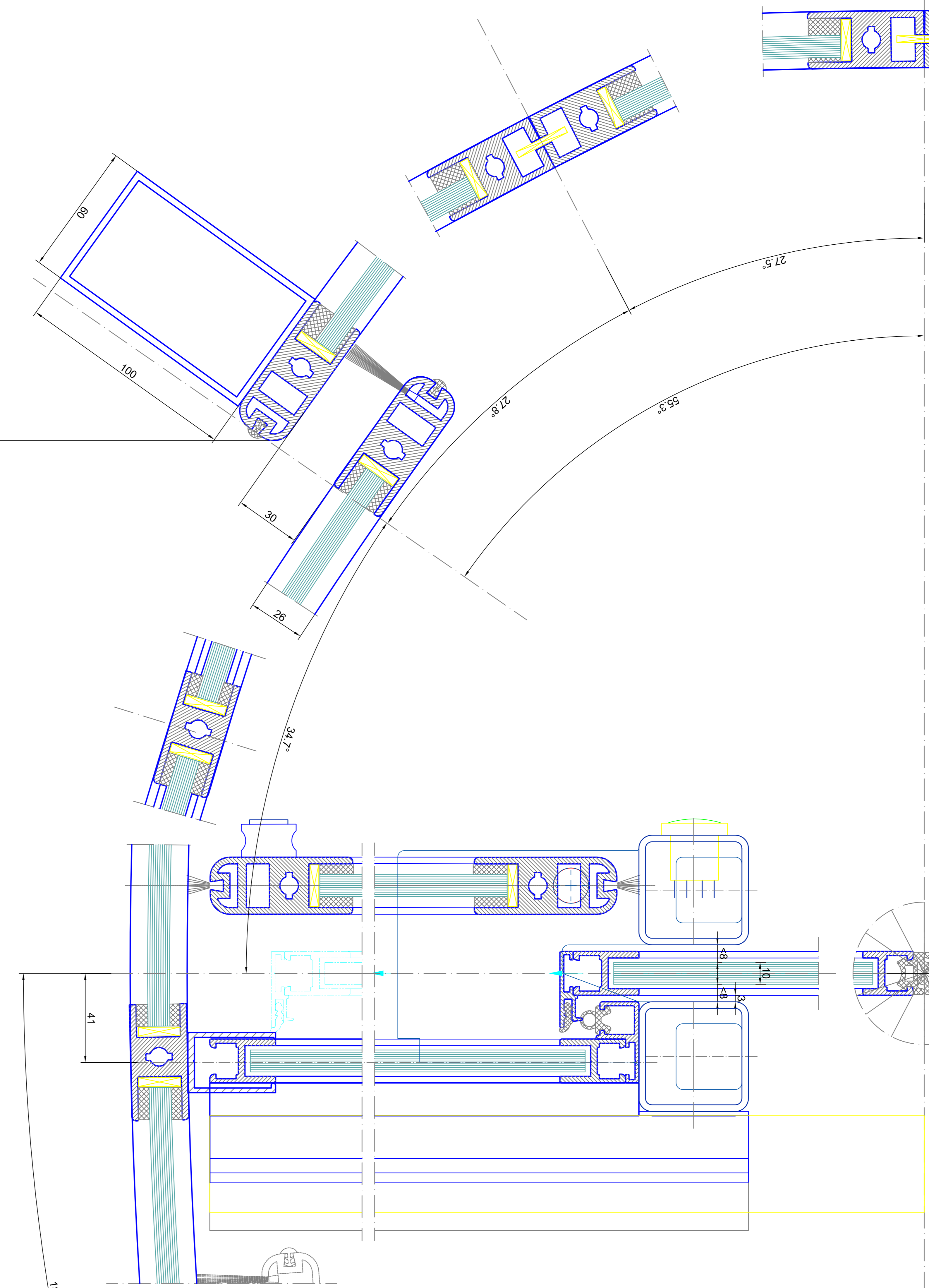
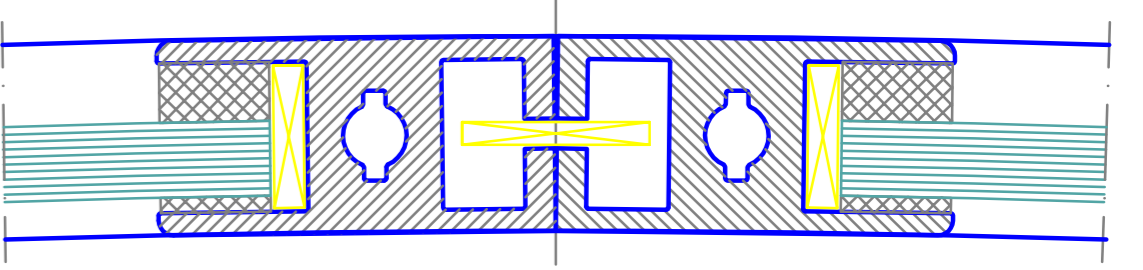
Scale:	A4 = M 1:10	Configuration No.:	54
Project:	BLASI	Scale:	A4 = M 1:10
Client:	BLASI	Project:	K21-SF-54
Contract:	Automatic Doors	Contract:	SAMPLE DRAWING ONLY
Address:	Blasi s.p.a. - Via S. Maria 10 - 20139 Milano - Italy	Address:	
Phone:	+39 02 86111111	Phone:	
Fax:	+39 02 86111111	Fax:	
Website:	www.blasi.it	Website:	
Created:	2024-01-15	Created:	
Modified:	2024-01-15	Modified:	
Version:	01	Version:	

**BLASI**  
 Automatic Doors  
 Call center: +39 02 86111111  
 Website: www.blasi.it

8 L x 3 G m x H  
 Automatic Doors  
 Call center: +39 02 86111111  
 Website: www.blasi.it

Technical drawing showing a door with a canopy and a person standing inside. Dimensions include: total height J = 2770, passage height G = 2200 (2200-3000), canopy height I = 570, total diameter Q = 5558, top of the door at 2770, bottom edge canopy at 2200, passage width A = 3030, inside diameter U = 5400, and outside diameter T = 5452. Callouts indicate 'OPTION: waterspout Ø40' at the top and bottom edges. A 'FEL ±0.000 (±1)' level marker is shown at the bottom. A person is drawn inside the door for scale, with a height of 1200 and a width of 800.





passage width A = 3030

# horizontal section - details

Scale:	1:1	Material:	Aluminum
Project:	304.48	Standard:	EN 12543-1
Client:	tempered safety glass 10 mm	Manufacturer:	tempered safety glass 10 mm
Product:	tempered safety glass 10 mm	Supplier:	tempered safety glass 10 mm
Notes:	All visible components must be made of aluminum		
Scale:	A0 = 1:1	Version:	05
Type:	K21-SISF-54	Configuration No.:	05
Product:	SAMPLE DRAWING ONLY	Revision:	05
Company:	BLASI	Created:	05
Address:	B.L.A.S.I. G.m.b.H. Automatic Doors Cef. Strada 5-15 0-11172 - Bolzano	Checked:	05
Phone:	Tel. +390471 883.291	Approved:	05
Fax:	Fax. +390471 883.299	Released:	05
Website:	www.blasi.it	Released:	05
Email:	prod@blasi.com	Released:	05
Logo:		Released:	05