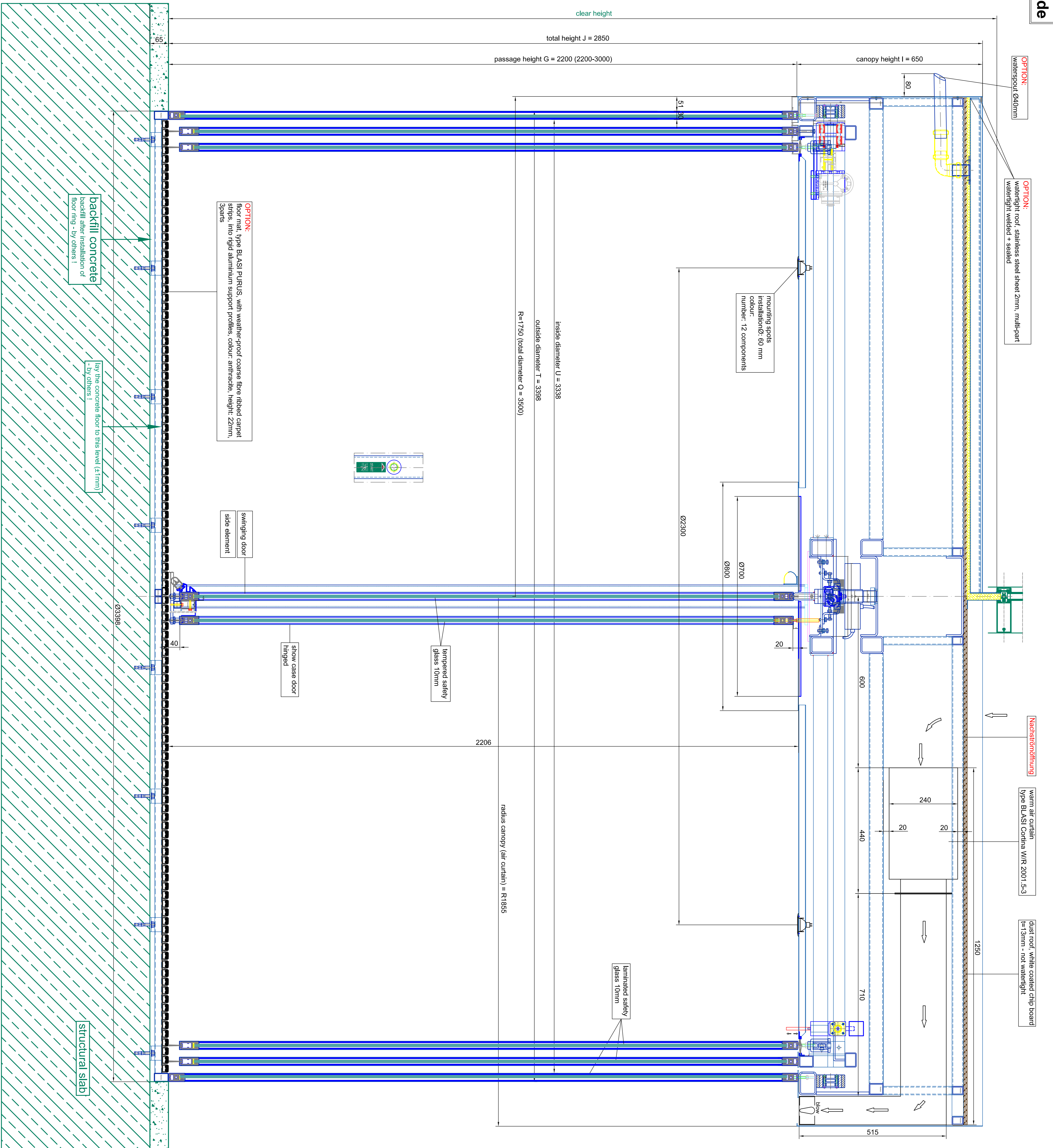
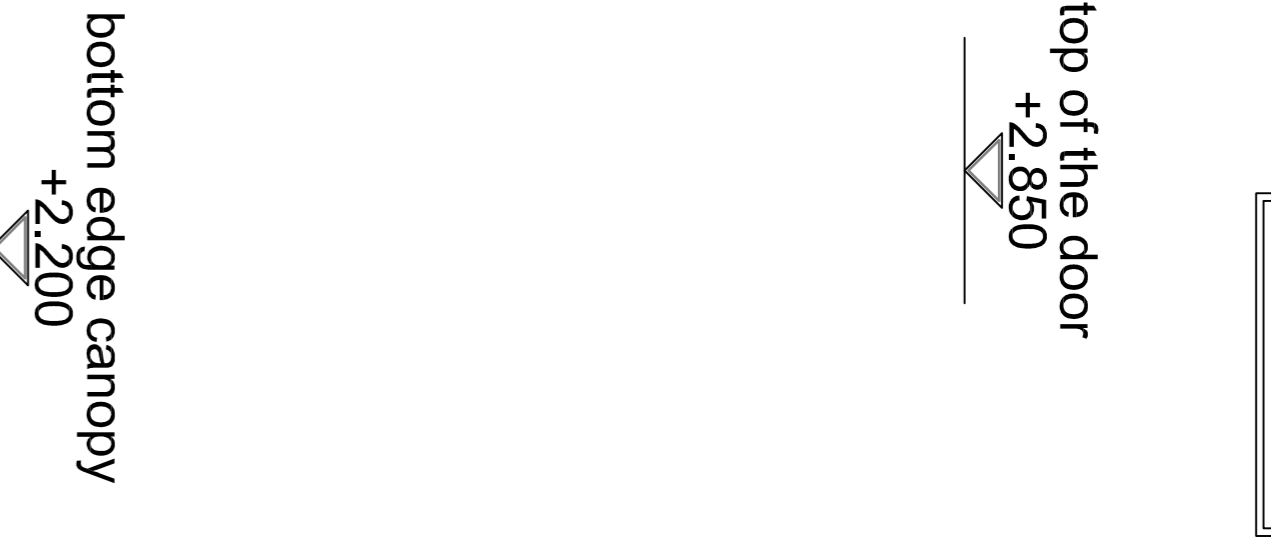


vertical section

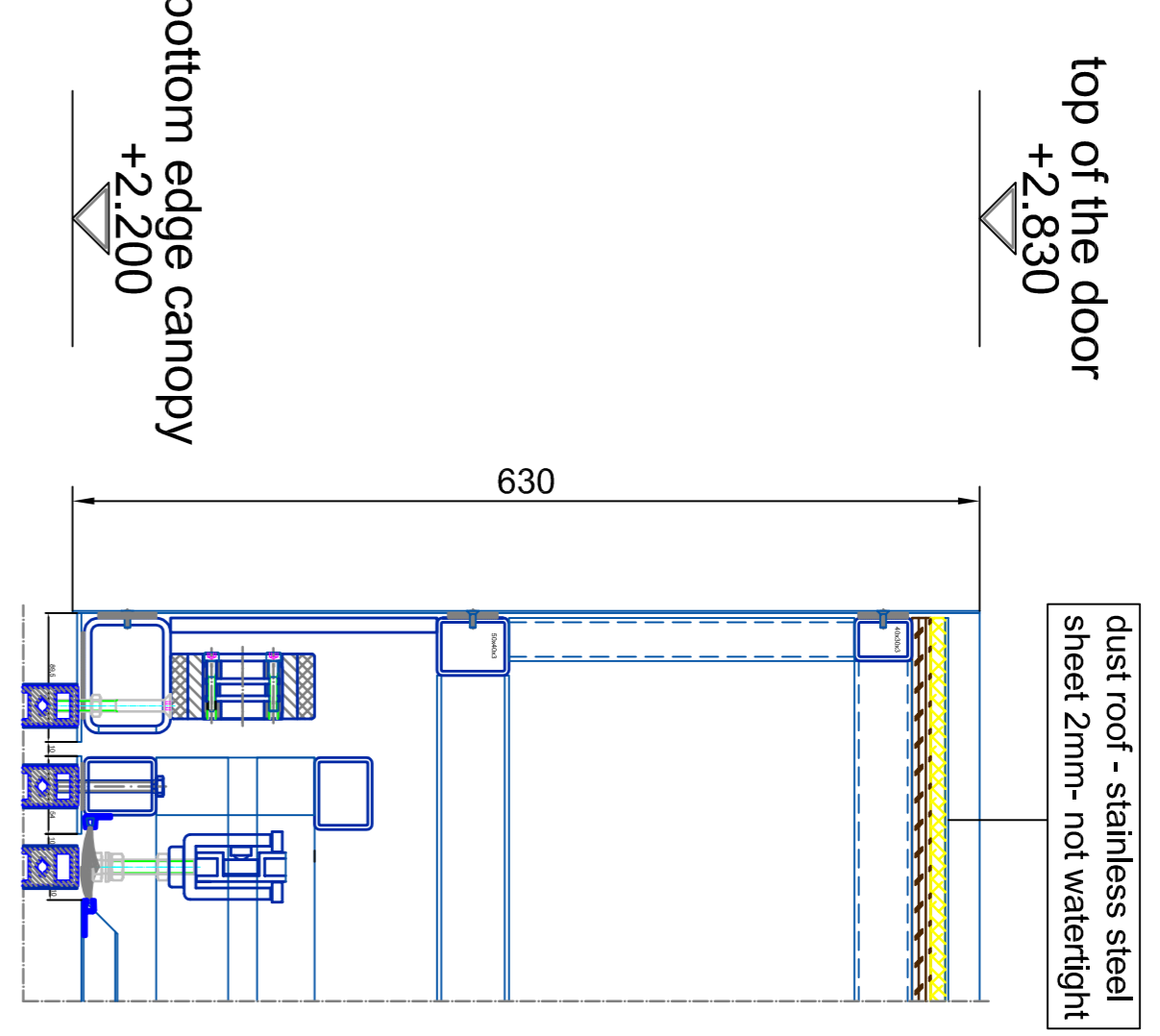


FEL
±0.000 (±1)
-0.065 (±1)
SSL

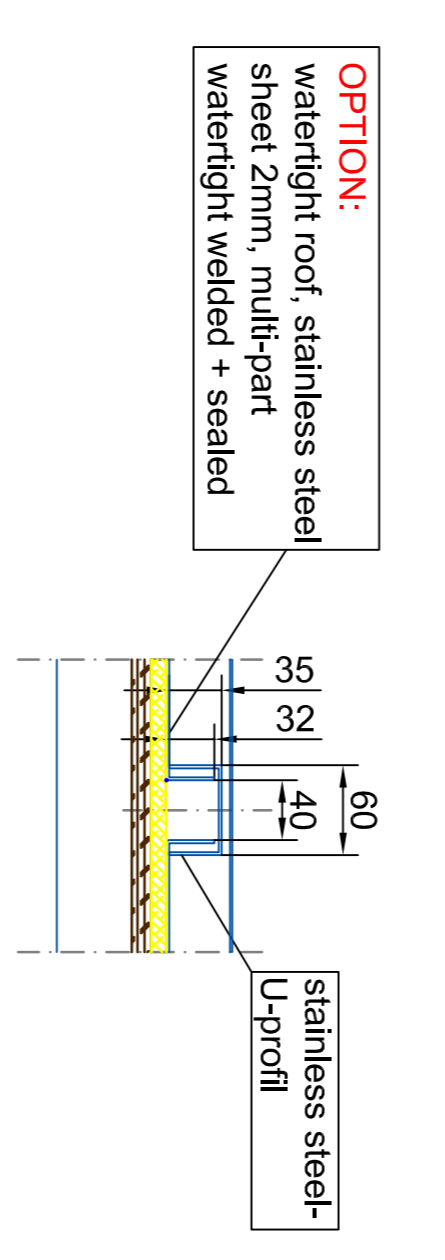
inside



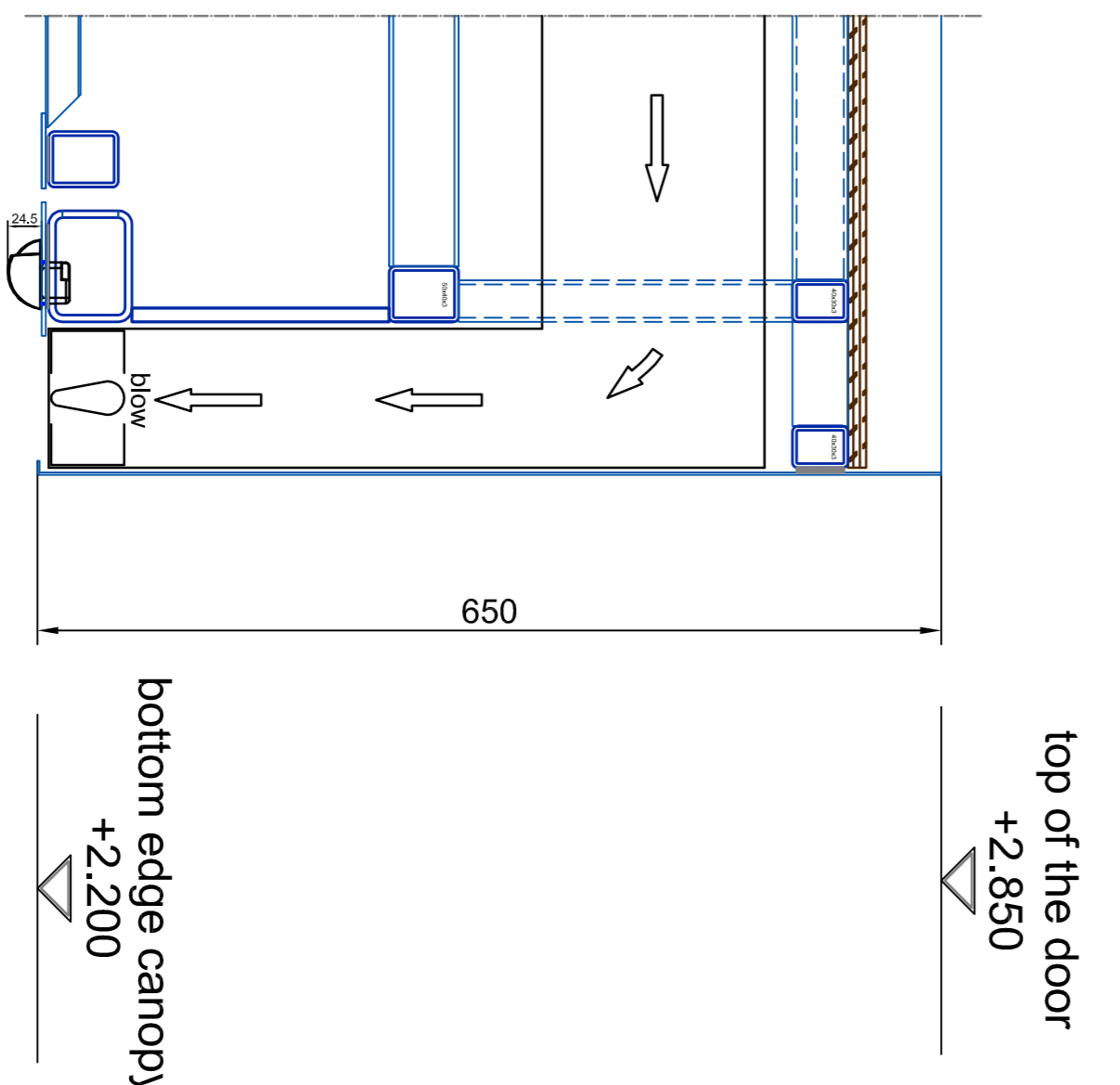
vertical section -
dust roof / outside



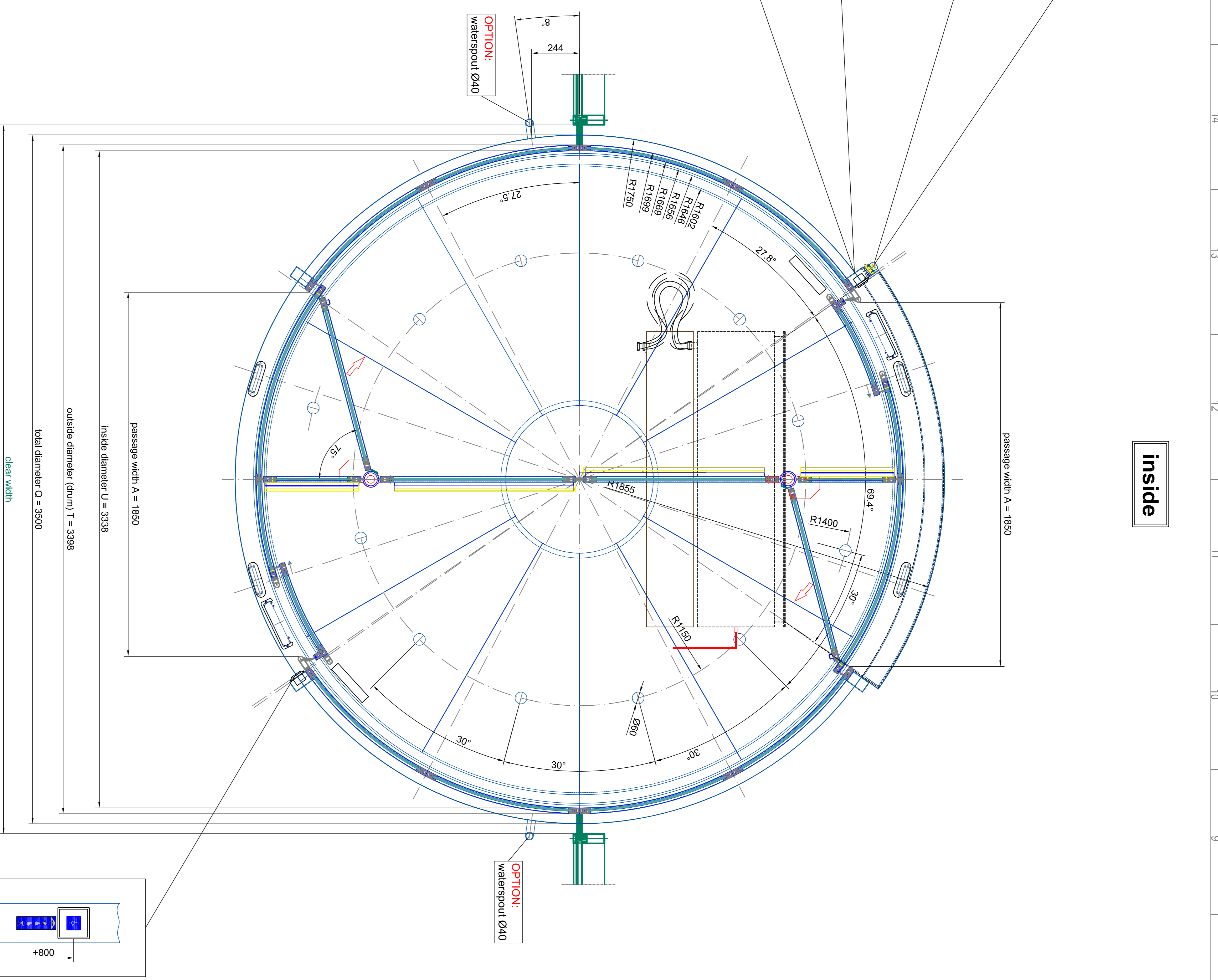
vertical section -
watertight roof - multipart



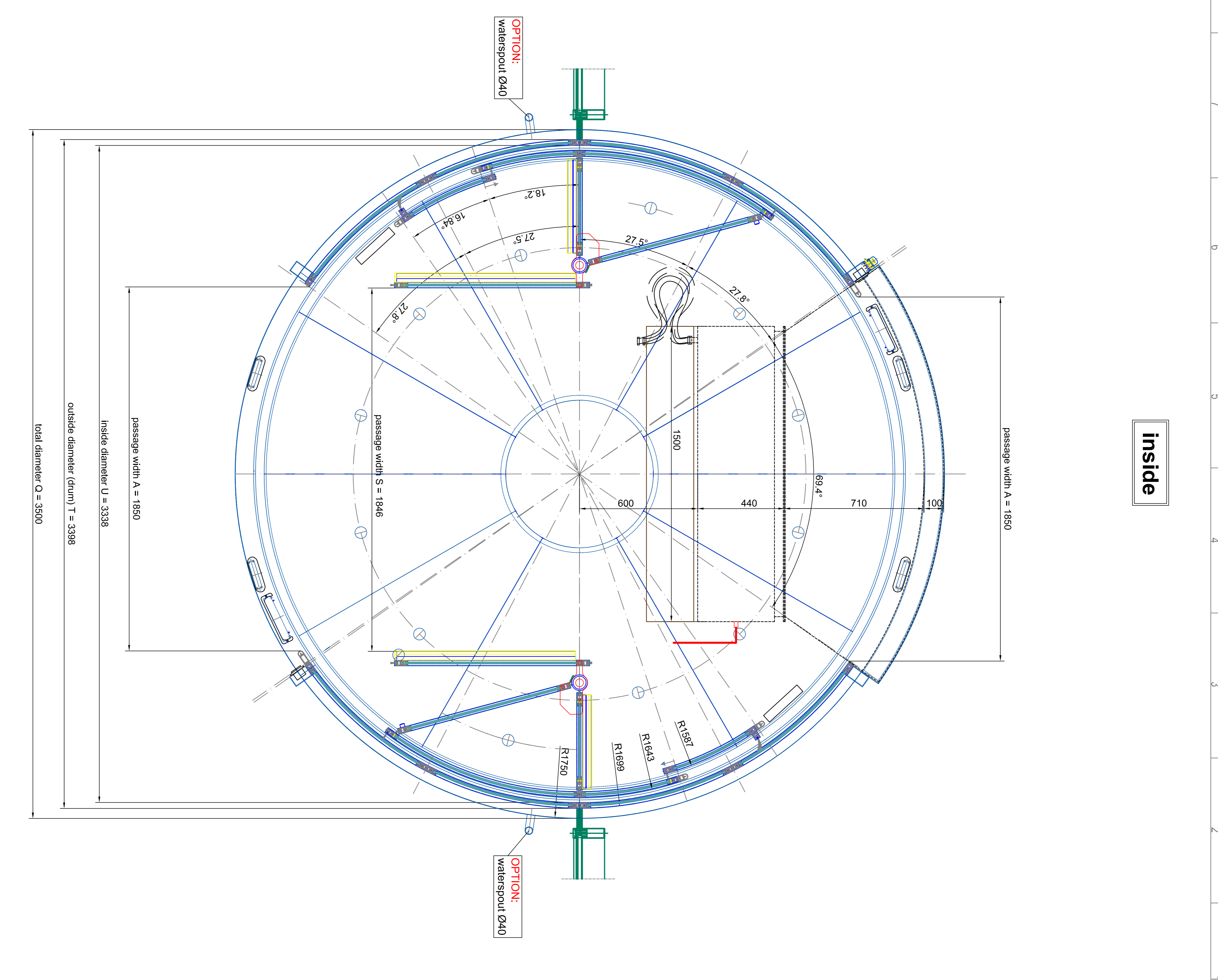
vertical section -
passage area / inside



BLASI BLASI GmbH Automatic Doors Carl-Heinrich-Str. 5-15 D-71737 Albstadt Tel. +49(0)7141 / 883-230 Fax. +49(0)7141 / 883-239 E-mail: info@blasi.de www.blasi.de		Model: KA-15 Code: K21-D/M-35 Project: SAMPLE DRAWING ONLY Date: 01 Rev: 04	
Material: stainless steel (A316) satin, 1.4308 (316Ti) stainless steel, 2x10 Profile: grün 2x10 Glass: tempered safety glass 10 mm Sealant: laminated safety glass 10 mm	Ref. drawing: 1.4308 (316Ti) stainless steel, 2x10 Ref. drawing: 1.4308 (316Ti) stainless steel, 2x10 Ref. drawing: 1.4308 (316Ti) stainless steel, 2x10	Scale: 1:1 Drawing No.: 01 Revision: 04	Date: 01 Rev: 04

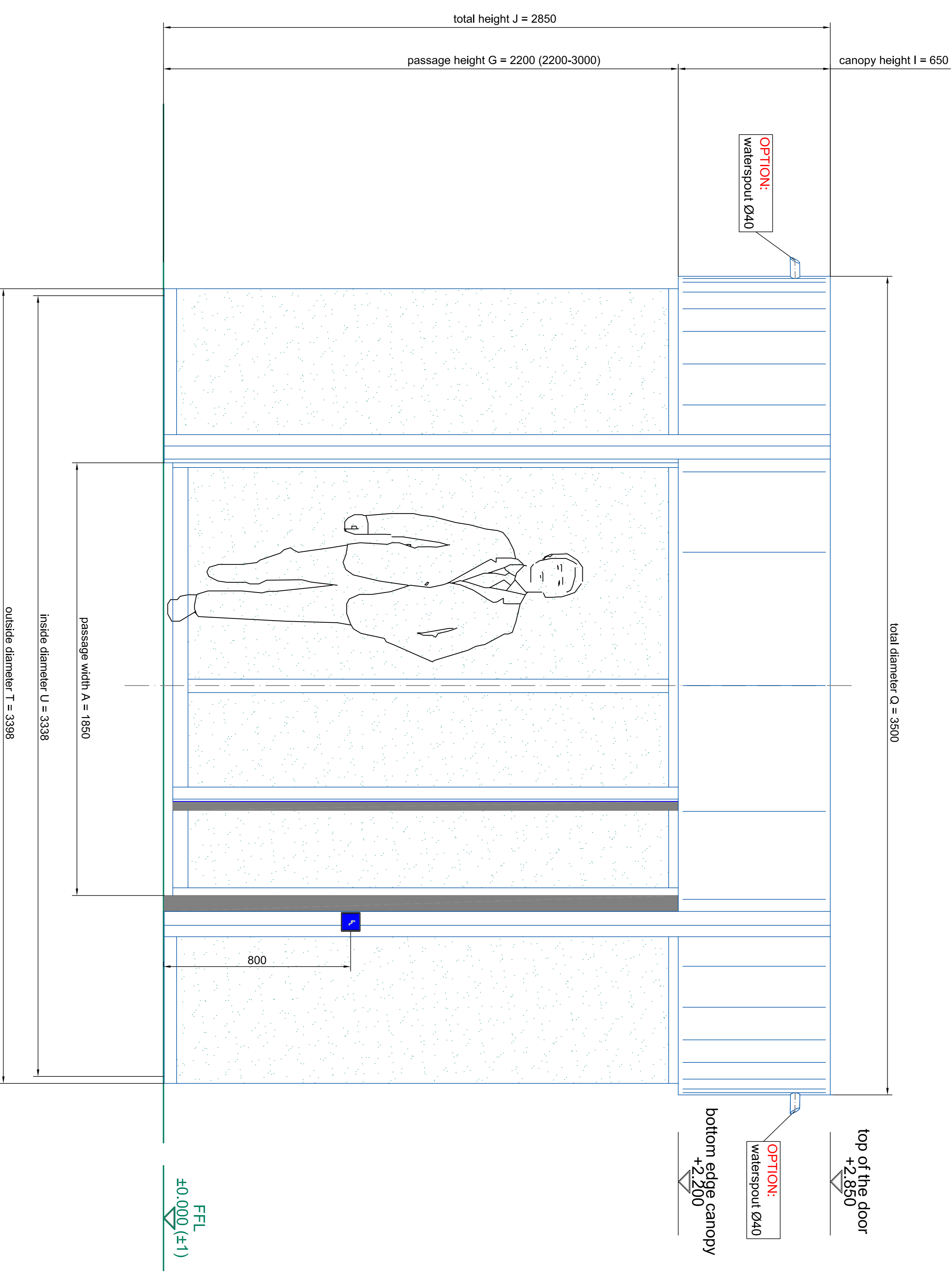


horizontal section - door in standard position



horizontal section - door in open door position

Material	stainless steel (A 316 satin) (1.4571) (304)	Material components	1.4571 (304) (316)
Surface	grain 240	Material components	1.4571 (304) (316)
Handle	tempered safety glass 10 mm	Material components	1.4571 (304) (316)
Glass	tempered safety glass 10 mm	Material components	1.4571 (304) (316)
Door	tempered safety glass 10 mm	Material components	1.4571 (304) (316)
Lock	tempered safety glass 10 mm	Material components	1.4571 (304) (316)
Seal	tempered safety glass 10 mm	Material components	1.4571 (304) (316)
Welding	tempered safety glass 10 mm	Material components	1.4571 (304) (316)
Paint	tempered safety glass 10 mm	Material components	1.4571 (304) (316)
Accessories	tempered safety glass 10 mm	Material components	1.4571 (304) (316)
Notes	1. All dimensions are in millimeters (mm) unless otherwise specified. 2. All dimensions are in millimeters (mm) unless otherwise specified.		
Scale	A4=1:10	Scale	A4=1:10
Model	K21-DV-35	Model	K21-DV-35
Project	SAMPLE DRAWING ONLY	Project	SAMPLE DRAWING ONLY
Client	BLASI	Client	BLASI
Address	B.L.A.S.I. G.m.b.H. Automatic Doors Caf. Ober-Spitz 5-16 D-71737 Falkenberg www.blasi.it	Address	B.L.A.S.I. G.m.b.H. Automatic Doors Caf. Ober-Spitz 5-16 D-71737 Falkenberg www.blasi.it
Phone	+49(0)7142 / 883-231	Phone	+49(0)7142 / 883-231
Fax	+49(0)7142 / 883-239	Fax	+49(0)7142 / 883-239
Email	mail@blasi.com	Email	mail@blasi.com
Website	www.blasi.it	Website	www.blasi.it
Page	02	Page	02
Version	04	Version	04



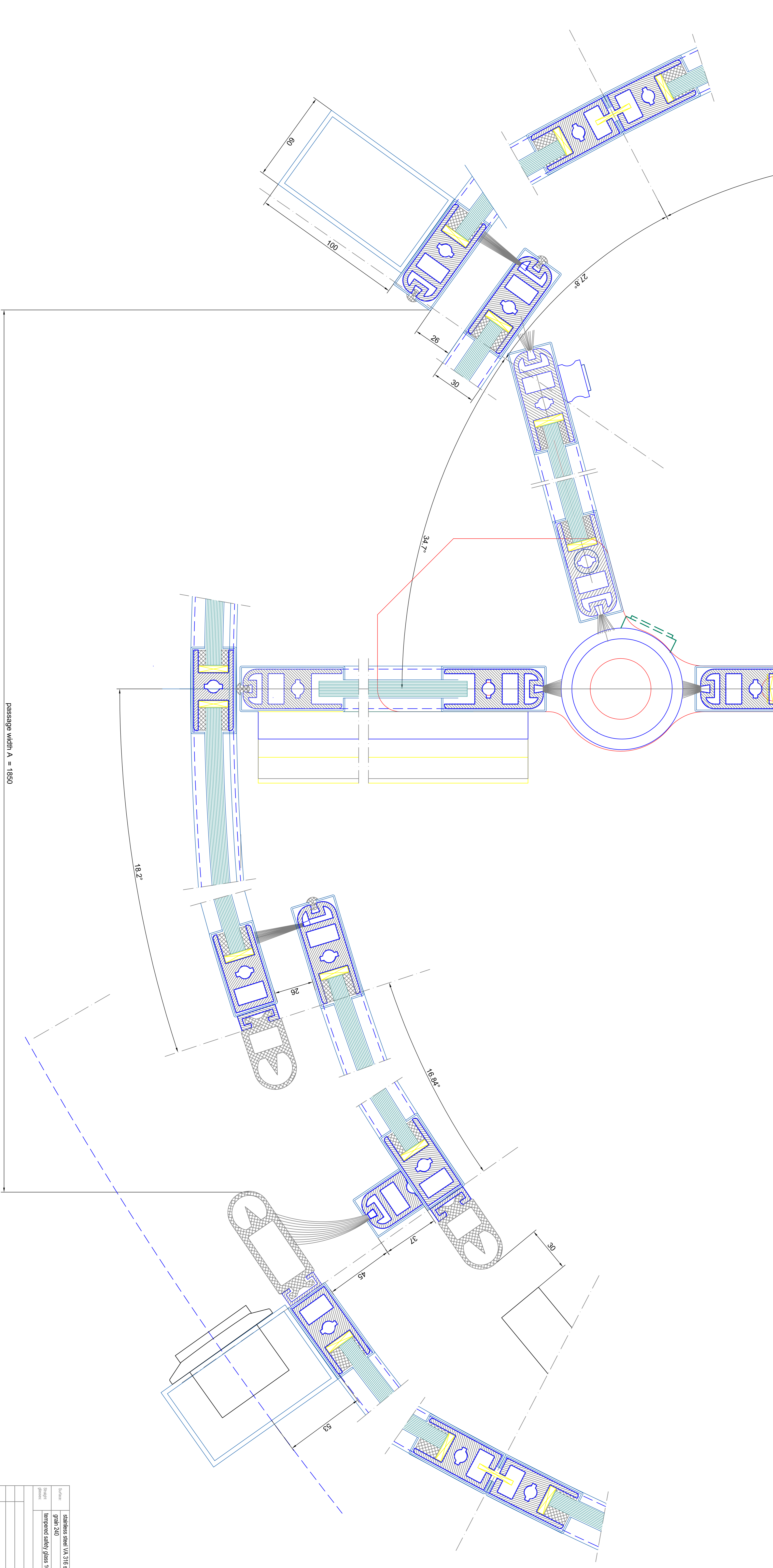
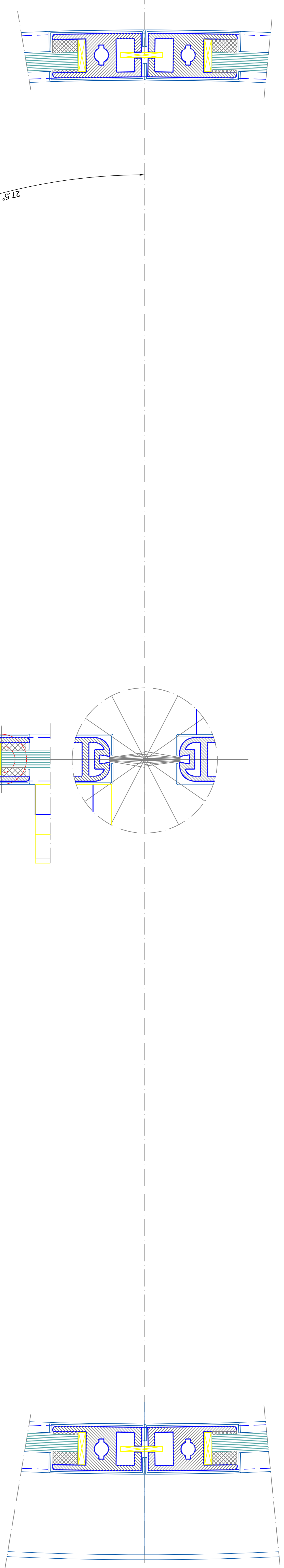
front elevation - outside

Substrate	stainless steel (A316 satin) (1.4513) (304) (1.4308) (304)	Material	stainless steel (A316 satin) (1.4513) (304) (1.4308) (304)
Profile	gran 240	Material	gran 240
Glass	tempered safety glass 10 mm	Material	tempered safety glass 10 mm
Glazing		Material	laminated safety glass 10 mm

Model	AM-H10
Project	K21-DN-35
Client	SAMPLE DRAWING ONLY

BLASI	Tel. +69222 / 881 - 291
Automatic Doors	Fax. +69222 / 881 - 299
Col. de. Street 5-16	E-mail. info@blasi.ro
D - 71172 Tulcea	Web. blasi.ro

Scale	1:100
Drawn	
Checked	
Approved	
Page	03
Total	04



passage width A = 1850

horizontal section - details

Material	stainless steel (A 316) satin	Material	stainless steel (EN 10088)
Surface	grain 240	Material	laminated safety glass 10 mm
Height	tempered safety glass 10 mm	Material	laminated safety glass 10 mm
Width		Material	

BLASI
 B.L.A.S.I. G.m.b.H.
 Automatic Doors
 Ost-Str. 5-15
 D-71737 Mühlburg
 Tel. +49(0)7141 / 883-230
 Fax. +49(0)7141 / 883-239
 E-mail: info@blasig.de
 WWW: blasig.de

Model: **Admitt**
 Project: **K21-D/M-35**
 Description: **SAMPLE DRAWING ONLY**

Page: **04**
 from: **04**